

EPM2A Polyclonal Antibody

Catalog NumberPA5-28073

Product data sheet

| Details | | Species Reactivity | |
|--------------------|--|--|----------------|
| Size | 100 µL | Species reactivity | Human |
| Host/Isotope | Rabbit / IgG | Tested Applications | |
| Class | Polyclonal | Immunohistochemistry (Paraffin) (IHC (P)) | 1:100-1:1,000 |
| Type | Antibody | Western Blot (WB) | 1:500-1:10,000 |
| Immunogen | Synthetic peptide corresponding to a region within amino acids 270 and 331 of Human Laforin | Immunocytochemistry (ICC/IF) | 1:100-1:1,000 |
| Conjugate | Unconjugated | * Suggested working dilutions are given as a guide only. It is recommended that the user titrate the product for use in their own experiment using appropriate negative and positive controls. | |
| Form | Liquid | | |
| Concentration | 1 mg/mL | | |
| Purification | Antigen affinity chromatography | | |
| Storage buffer | PBS, pH 7, with 40% glycerol | | |
| Contains | 0.01% thimerosal | | |
| Storage Conditions | Store at 4°C short term. For long term storage, store at -20°C, avoiding freeze/thaw cycles. | | |

Product specific information

Recommended positive controls: 293T, A431, HeLa, HepG2, Raji. Store product as a concentrated solution. Centrifuge briefly prior to opening the vial.

Background/Target Information

The Epilepsy, progressive myoclonus type 2A protein (EPM2A) is a dual-specificity phosphatase that associates with polyribosomes. Mutations in this gene have been associated with myoclonic epilepsy of Lafora. EPM2A interacts with a number of proteins known to be involved in glycogen metabolism and has been shown to have robust phosphatase activity against a phosphorylated complex carbohydrate, suggesting that EPM2A may be involved in the regulation of glycogen metabolism.

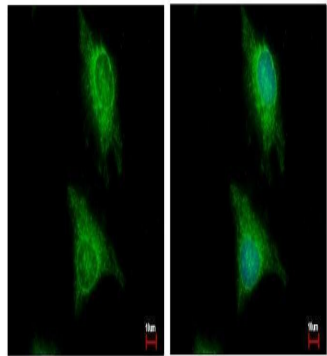
For Research Use Only. Not for use in diagnostic procedures. Not for resale without express authorization.

For Research Use Only. Not for use in diagnostic procedures. Not for resale without express authorization.

Products are warranted to operate or perform substantially in conformance with published Product specifications in effect at the time of sale, as set forth in the Production documentation, specifications and/or accompanying package inserts ("Documentation"). No claim of suitability for use in applications regulated by FDA is made. The warranty provided herein is valid only when used by properly trained individuals. Unless otherwise stated in the Documentation, this warranty is limited to one year from date of shipment when the Product is subjected to normal, proper and intended usage. This warranty does not extend to anyone other than the Buyer. Any model or sample furnished to Buyer is merely illustrative of the general type and quality of goods and does not represent that any Product will conform to such model or sample.

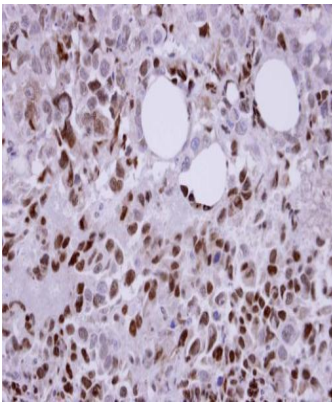
NO OTHER WARRANTIES, EXPRESS OR IMPLIED, ARE GRANTED INCLUDING WITHOUT LIMITATION, IMPLIED WARRANTIES OF MERCHANTABILITY, FITNESS FOR ANY PARTICULAR PURPOSE, OR NON-INFRINGEMENT. BUYER'S EXCLUSIVE REMEDY FOR NON-CONFORMING PRODUCTS DURING THE WARRANTY PERIOD IS LIMITED TO REPAIR, REPLACEMENT OF OR REFUND FOR THE NON-CONFORMING PRODUCT(S) AT SELLER'S SOLE OPTION. THERE IS NO OBLIGATION TO REPAIR, REPLACE OR REFUND FOR PRODUCTS AS THE RESULT OF (i) ACCIDENT, DISASTER OR EVENT OF FORCE MAJEURE, (ii) MISUSE, FAULT OR NEGLIGENCE OF OR BY BUYER, (iii) USE OF THE PRODUCTS IN A MANNER FOR WHICH THEY WERE NOT DESIGNED, OR (iv) IMPROPER STORAGE AND HANDLING OF THE PRODUCTS. Unless otherwise expressly stated on the Product or in the documentation accompanying the Product, the Product is intended for research only and is not to be used for any other purpose, including without limitation, unauthorized commercial uses, in vitro diagnostic uses, ex vivo or in vivo therapeutic uses, or any type of consumption by or application to human or animals.

Product Images For EPM2A Polyclonal Antibody



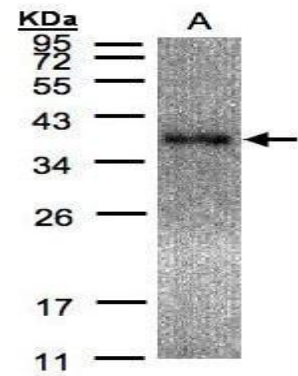
EPM2A Antibody (PA5-28073) in ICC/IF

EPM2A Polyclonal Antibody detects EPM2A protein at cytoplasm by immunofluorescent analysis. Sample: HeLa cells were fixed in ice-cold MeOH for 5 min. Green: EPM2A protein stained by EPM2A Polyclonal Antibody (Product # PA5-28073) diluted at 1:500. Blue: Hoechst 33343 staining.



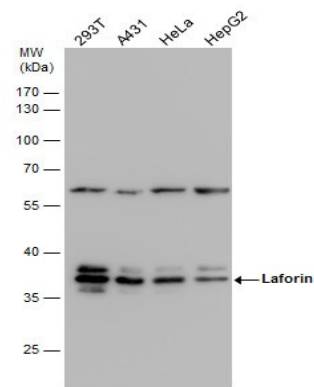
EPM2A Antibody (PA5-28073) in IHC (P)

Immunohistochemical analysis of paraffin-embedded CL1-0 xenograft, using Laforin (Product # PA5-28073) antibody at 1:100 dilution. Antigen Retrieval: EDTA based buffer, pH 8.0, 15 min.



EPM2A Antibody (PA5-28073) in WB

Western Blot using EPM2A Polyclonal Antibody (Product # PA5-28073). Sample (30 μg of whole cell lysate). A: Raji. 12% SDS PAGE. EPM2A Polyclonal Antibody (Product # PA5-28073) diluted at 1:5,000.



EPM2A Antibody (PA5-28073) in WB

Laforin antibody detects Laforin protein by western blot analysis. Various whole cell extracts (30 μg) were separated by 10% SDS-PAGE, and the membrane was blotted with Laforin antibody EPM2A Polyclonal Antibody (Product # PA5-28073) diluted by 1:3,000.

For Research Use Only. Not for use in diagnostic procedures. Not for resale without express authorization.

Products are warranted to operate or perform substantially in conformance with published Product specifications in effect at the time of sale, as set forth in the Production documentation, specifications and/or accompanying package inserts ("Documentation"). No claim of suitability for use in applications regulated by FDA is made. The warranty provided herein is valid only when used by properly trained individuals. Unless otherwise stated in the Documentation, this warranty is limited to one year from date of shipment when the Product is subjected to normal, proper and intended usage. This warranty does not extend to anyone other than the Buyer. Any model or sample furnished to Buyer is merely illustrative of the general type and quality of goods and does not represent that any Product will conform to such model or sample.

NO OTHER WARRANTIES, EXPRESS OR IMPLIED, ARE GRANTED INCLUDING WITHOUT LIMITATION, IMPLIED WARRANTIES OF MERCHANTABILITY, FITNESS FOR ANY PARTICULAR PURPOSE, OR NON-INFRINGEMENT. BUYER'S EXCLUSIVE REMEDY FOR NON-CONFORMING PRODUCTS DURING THE WARRANTY PERIOD IS LIMITED TO REPAIR, REPLACEMENT OF OR REFUND FOR THE NON-CONFORMING PRODUCT(S) AT SELLER'S SOLE OPTION. THERE IS NO OBLIGATION TO REPAIR, REPLACE OR REFUND FOR PRODUCTS AS THE RESULT OF (i) ACCIDENT, DISASTER OR EVENT OF FORCE MAJEURE, (ii) MISUSE, FAULT OR NEGLIGENCE OF OR BY BUYER, (iii) USE OF THE PRODUCTS IN A MANNER FOR WHICH THEY WERE NOT DESIGNED, OR (iv) IMPROPER STORAGE AND HANDLING OF THE PRODUCTS. Unless otherwise expressly stated on the Product or in the documentation accompanying the Product, the Product is intended for research only and is not to be used for any other purpose, including without limitation, unauthorized commercial uses, in vitro diagnostic uses, ex vivo or in vivo therapeutic uses, or any type of consumption by or application to human or animals.