

# Next generation antibody tools: Sub-domain specific affinity ligands covering a broad variety of antibody discovery platforms



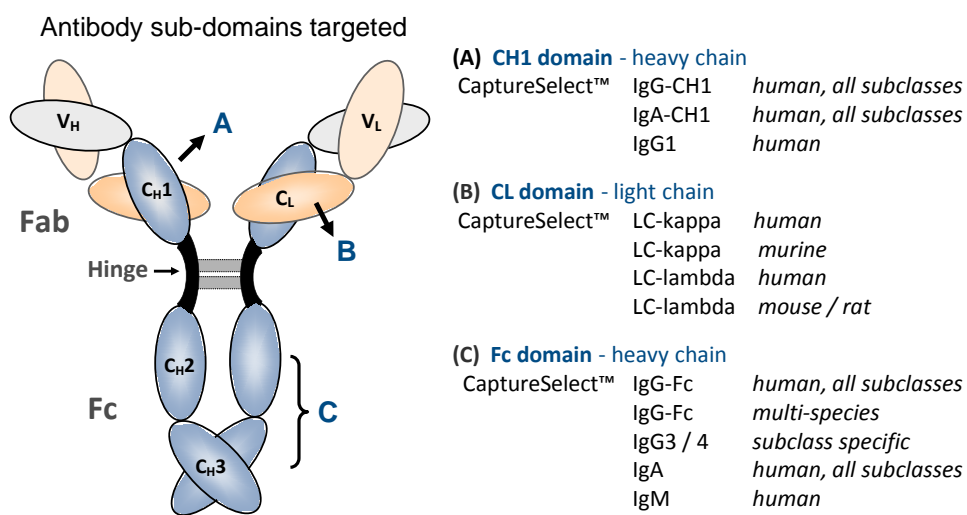
Pim Hermans, Frank Detmers, Bruce Dawson, Life Technologies, 5791 Van Allen Way, Carlsbad, CA, 92008

## CaptureSelect™ Affinity Ligands

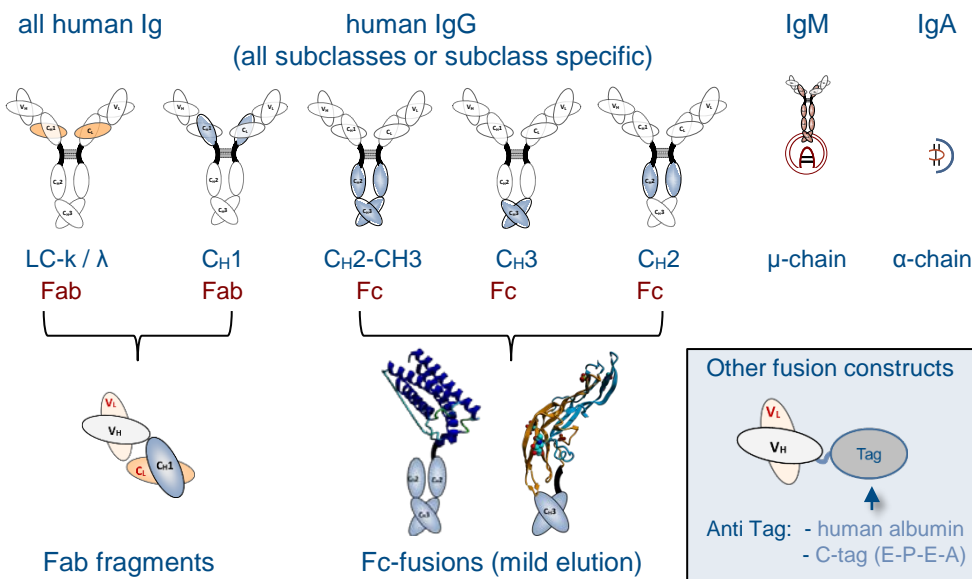
CaptureSelect™ purification and affinity separation products are developed for the discovery and manufacturing of therapeutic proteins, including antibodies and antibody fragments. These products enable a reduced time to market, increased purity and yield and an overall lower cost of goods for biopharmaceutical development.

## Antibody Domain Selectivity's

A unique set of CaptureSelect™ affinity ligands has been developed directed against a variety of antibody sub-domains providing tools for researchers and manufacturers to facilitate immuno-affinity based detection and purification of a broad range of antibody formats:



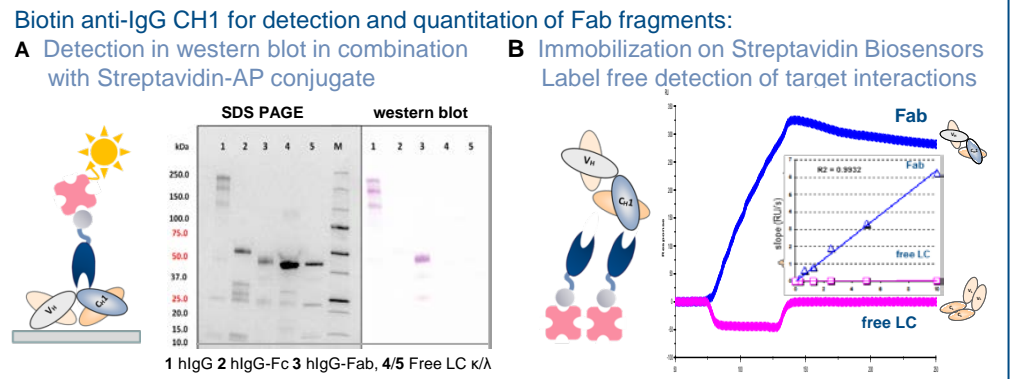
### Covering whole antibodies, antibody fragments and fusion proteins:



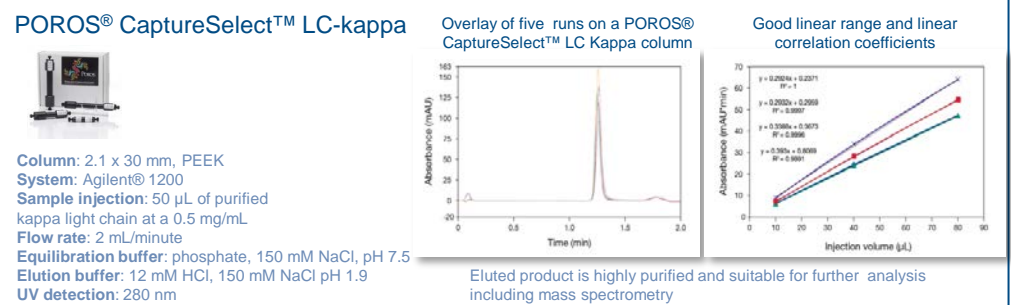
## Broad Application Range



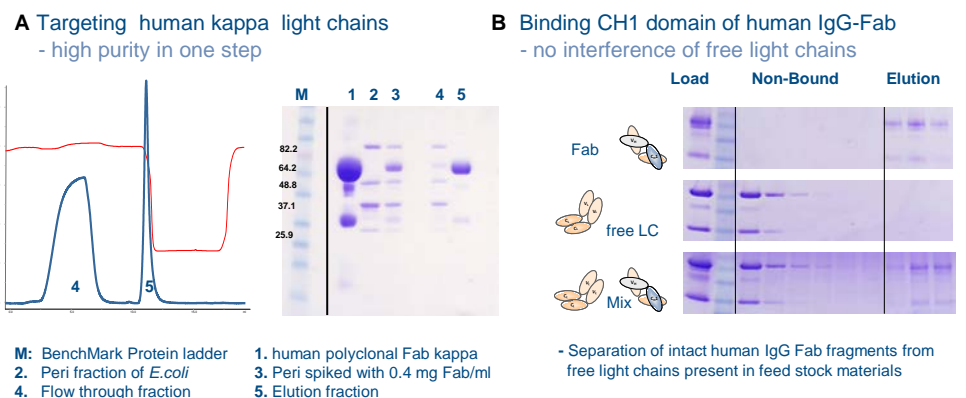
### CaptureSelect™ Biotin Conjugates: detection and quantitation of antibodies



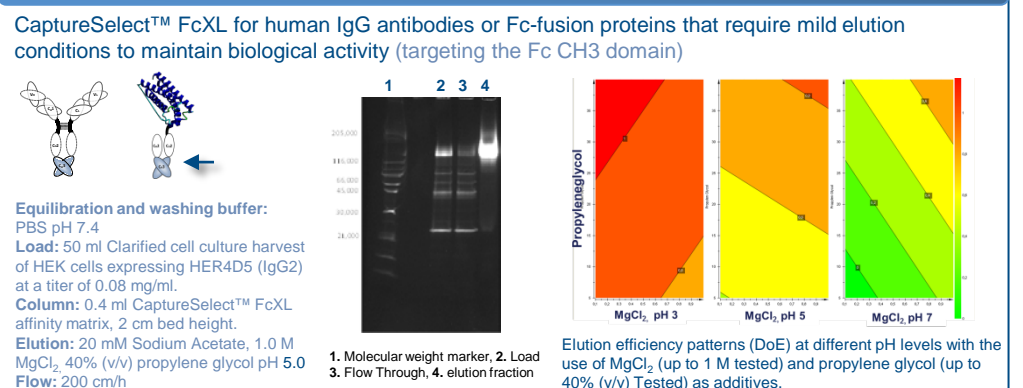
### POROS® CaptureSelect™: Rapid quantitation of antibody samples



### CaptureSelect™ Affinity Resins: purification of human Fab fragments



### CaptureSelect™ Affinity Resins: introducing mild elution conditions



### CaptureSelect™ Product Formats

Affinity Ligand	Species	Biotin	HPLC (POROS®)	Resin slurries	Large Scale
IgG-Fc (CH3)	Human	✓	✓	✓	-
IgG-Fc	Multi	✓	-	✓	-
IgG-CH1	Human +	✓	-	✓	✓
IgG-1, 3 or 4	Human	✓	-	✓	-
IgA	Human	✓	✓	✓	✓
IgM	Hu, Mo, Rat	✓	✓	✓	✓
LC-kappa / lambda	Human	✓	✓	✓	✓
LC-kappa / lambda	Murine	✓	-	✓	-
HSA (albumin fusions)	Human	-	✓	✓	✓
C-tag (4 residues)	peptide: EPEA	✓	-	✓	-

## CaptureSelect™ Antibody Product Range

**Antibody Toolbox®**

Range of affinity ligand for detection, quantitation and purification of antibodies and antibody fragments

**Analytical Tools**

- HPLC: POROS® media, in pre-packed columns
- Conjugates: Ligands chemically conjugated to biotin

**Antibody Purification**

Unique resin collections offering a one-step solution for antibody purification

**Bioprocess Products**

Off-the-shelf affinity products for cGMP manufacturing of antibody formats

- Leakage ELISA's: Supporting our resins suitable for cGMP manufacturing

[lifetechnologies.com/captureselect](http://lifetechnologies.com/captureselect)