

# Thermo Scientific Phire Plant Direct PCR Kit: Plant Genotyping And Transgene Detection Without DNA Purification

Pia Kuusisto and Pak Yang Chum, Thermo Fisher Scientific, Vantaa, Finland

## Abstract

Thermo Scientific™ Phire™ Plant Direct PCR Kit enables DNA amplification directly from various plant tissues. Here we present simple and robust protocols for plant genotyping and transgene detection without the need to purify the DNA before PCR. This saves both time and cost. In this application note the Thermo Scientific™ Piko™ Thermal Cycler and UTW PCR vessels were used to obtain optimal results in the minimal amount of time.

## Introduction

PCR-based target DNA detection has many applications in plant research, such as plant genotype analysis and verification of RNAi transgenes. PCR from plant tissues traditionally involves an initial DNA isolation step which may require expensive or toxic reagents, and is time consuming with an increased risk of cross contamination<sup>1,2</sup>. However, using the Phire Plant Direct PCR Kit the DNA target can be detected easily, without prior DNA extraction.

Here we demonstrate that the presence of a transgene (or an RNAi vector) in gerbera plant individuals can be detected easily both from plant leaves and petal tissue without prior DNA extraction. In another model we present an example of a derived cleaved amplified polymorphic sequence analysis (dCAPS)<sup>3</sup> performed directly from *Arabidopsis* plant leaves.

## Materials and Methods

- Phire Plant Direct PCR Kit
- SspI
- 24-well Piko Thermal Cycler
- Piko PCR Plates
- Gerbera and *Arabidopsis* tissues

### Gerbera Leaves And Petal Tissues

**Direct protocol:** A 0.50 mm punch was cut from a plant leaf using the Harris Uni-Core™ (included in the kit). The samples were placed directly into 20 µL PCR reactions. Reactions were run using a 24-well Piko Thermal Cycler and Piko PCR Plates. The resulting PCR products were analyzed on agarose gels.

### *Arabidopsis* Leaves

**Direct protocol:** A 0.50 mm punch was cut from a plant leaf using the Harris Uni-Core™. The samples were placed directly into 50 µL PCR reactions. Reactions were run using a 24-well Piko Thermal Cycler and Piko PCR Plates.

**Restriction digestion:** After PCR, the reactions were spun down. The restriction digestion reactions were performed with SspI directly in the supernatants, and the resulting fragments were analyzed on agarose gel. *Note: When amplifying DNA directly from plant tissues, the PCR products include plant and PCR derived components that may interfere with the restriction digestion enzyme.* Therefore, it may be necessary to either dilute (such as 1:2 or 1:3 in water) or purify the PCR product before the subsequent digestion.

**Table 1.** Reaction conditions for PCR.

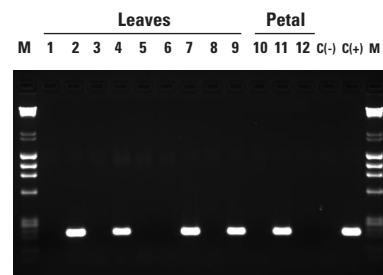
Components	20 $\mu$ L Reaction	50 $\mu$ L Reaction	Final Conc.
H <sub>2</sub> O	add to 20 $\mu$ L	add to 50 $\mu$ L	
2x Phire Plant PCR Buffer	10 $\mu$ L	25 $\mu$ L	1x
primer A	x $\mu$ L	x $\mu$ L	0.5 $\mu$ M
primer B	x $\mu$ L	x $\mu$ L	0.5 $\mu$ M
Phire Hot Start II DNA Polymerase	0.4 $\mu$ L	1 $\mu$ L	
Plant tissue	0.5 mm punch	0.5 mm punch	

**Table 2.** Cycling conditions.

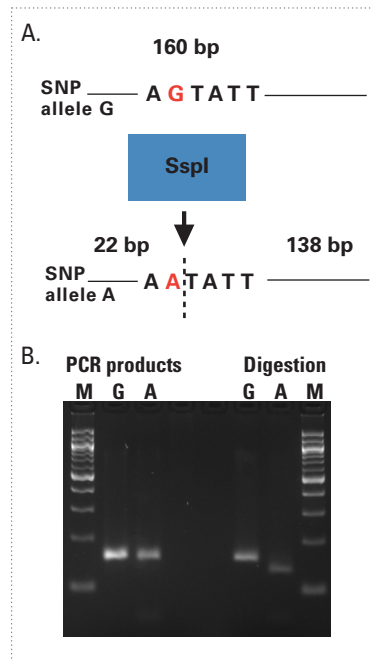
Cycle Step	3-step protocol		Cycles
	Temp.	Time	
Initial denaturation	98 °C	5 minute	1
Denaturation	98 °C	5 s	40
Annealing	X °C	-	
Extension	72 °C	20 s	
Final extension	72 °C 4 °C	1 minute hold	1

## Results and Discussion

In this application note we describe the performance of the Phire Plant Direct PCR Kit in two target DNA detection approaches. First we demonstrated that an RNAi vector can be easily detected from gerbera plants without any template purification (Figure 1). Twelve gerbera individuals were tested by simply placing a 0.50 mm punch of leaf or petal tissue into a PCR reaction. Five individuals gave a positive signal with RNAi transgene-specific primers indicating the presence of the RNAi vector.



**Figure 1.** Detection of RNAi vector in gerbera plants using the Thermo Scientific Direct PCR approach. Punches (0.50 mm) from plant leaves or petal tissues were placed directly in 20  $\mu$ L PCR reactions, and 210 bp products were amplified using transgene-specific primers. The results indicate that plant individuals corresponding to samples 2, 4, 7, 9 and 11 contain the RNAi transgene. The obtained results were confirmed by conventional analysis of CTAB DNA extraction followed by PCR (data not shown).



**Figure 2.** Genotyping of *Arabidopsis* plant individuals with dCAPS technique directly from leaf punches. Punches (0.50 mm) from plant leaves were placed directly in 50  $\mu$ L PCR reactions, and 160 PCR products containing the SNP site (G or A allele) were amplified with primers introducing a unique *SspI* site to the A-allele. The unpurified PCR products were digested with *SspI* restriction enzyme. The resulting fragments were analyzed on 3% agarose gel. M, size marker; A and G correspond to the SNP alleles of each sample. The obtained results were confirmed by conventional analysis of DNA extraction followed by PCR and restriction digestion.

The results were confirmed with a conventional DNA extraction method using hexadecyltrimethylammonium bromide (CTAB; data not shown). The sample material was also tested with the control primer set supplied with the kit to ensure the reagents and samples were in good condition (data not shown).

Next we tested the suitability of the Phire Plant Direct PCR Kit to dCAPS genotyping. In dCAPS genotyping assays, single nucleotide polymorphisms (SNPs) are identified by SNP allele specific restriction endonuclease digestion. The restriction site within the SNP of interest is either introduced or destroyed by PCR using a primer with one or more mismatches to the target DNA. After PCR, the PCR products are digested and the resulting fragments revealing the genotype of each individual are analyzed on agarose gel.

In this example the SNP site of interest in the *Arabidopsis* genome was amplified from plant leaf punches with the Phire Plant Direct PCR Kit. The forward primer contained one mismatch at the 3'-end creating an *SspI* specific restriction site in the target DNA which included the SNP of interest (A-allele) but not in the other allele of that particular SNP (Figure 2). Note that even though the 3'-5'-exonuclease activity of the Phire Hot Start II DNA Polymerase is moderate, it was necessary to use one 3'-terminal phosphorothioate (PTO) modification in the 3'-end of forward primer. The PCR product was digested with *SspI* directly in the PCR reaction mix. Agarose gel analysis revealed high yields of digested product. This result confirmed that no DNA purification is required prior to dCAPS genotyping when using the Phire Plant Direct PCR Kit.

## Acknowledgements

The gerbera samples and the related PCR primers were kindly provided by Professor Paula Elomaa and her group, Gerbera laboratory, Dept. of Agricultural Sciences, University of Helsinki. For the *Arabidopsis* samples and the concerned PCR primers we thank Professor Jaakko Kangasjärvi and his group; The Plant Stress Group; Plant Biology; Department of Biosciences; and University of Helsinki. The experiments with the traditional methods were conducted by Dr. Anneke Rijpkema and Mrs. Airi Lamminmäki.

## References

1. J.J. Doyle, J.L. Doyle, A rapid DNA isolation procedure for small quantities of fresh leaf tissue. *Phytochemical Bulletin* 19(1), 11-15 (1987).
2. C.S. Kim, C.H. Lee, et al., A simple and rapid method for isolation of high quality genomic DNA from fruit trees and conifers using PVP. *Nucleic Acids Res.* 25(5), 1085-1086 (1997).
3. M.M. Neff, J.D. Neff, et al., dCAPS, a simple technique for the genetic analysis of single nucleotide polymorphisms: experimental applications in *Arabidopsis thaliana* genetics. *The Plant Journal* 14(3), 387-392 (1998).

## [thermoscientific.com/onebio](http://thermoscientific.com/onebio)

©2013 Thermo Fisher Scientific Inc. All rights reserved. Harris Uni-Core is registered trademark of GE Health Companies. All other trademarks are the property of Thermo Fisher Scientific Inc. and its subsidiaries. This information is presented as an example of the capabilities of Thermo Fisher Scientific Inc. products. It is not intended to encourage use of these products in any manners that might infringe the intellectual property rights of others. Specifications, terms and pricing are subject to change. Not all products are available in all countries. Please consult your local sales representative for details.

### Europe

Customer Service  
cs.molbio.eu@thermofisher.com

Technical Support  
ts.molbio.eu@thermofisher.com

Tel 00800 222 00 888  
Fax 00800 222 00 889

### United States

Customer Service  
cs.molbio@thermofisher.com

Technical Support  
ts.molbio@thermofisher.com

Tel 800 235 9880  
Fax 800 292 6088

### Canada

Customer Service  
cs.molbio@thermofisher.com

Technical Support  
ts.molbio@thermofisher.com

Tel 800 340 9026  
Fax 800 472 8322

**Thermo**  
SCIENTIFIC

Part of Thermo Fisher Scientific