

CD103 (Integrin alpha E) Monoclonal Antibody (B-Ly7), PE, eBioscience™

Product Details	
Size	100 Tests
Species Reactivity	Human
Published Species	Human
Host/Isotype	Mouse / IgG1, kappa
Recommended Isotype Control	Mouse IgG1 kappa Isotype Control (P3.6.2.8.1), PE, eBioscience™
Class	Monoclonal
Type	Antibody
Clone	B-Ly7
Conjugate	PE
Excitation/Emission Max	565/576 nm
Form	Liquid
Concentration	5 µL/Test
Purification	Affinity chromatography
Storage buffer	PBS, pH 7.2, with 0.2% BSA
Contains	0.09% sodium azide
Storage conditions	4° C, store in dark, DO NOT FREEZE!
RRID	AB_11150242

Applications	Tested Dilution	Publications
Flow Cytometry (Flow)	5 µL (0.25 µg)/test	7 Publications

Product Specific Information

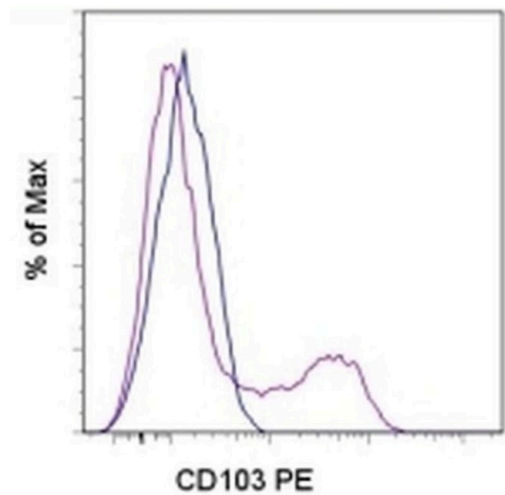
Description: The B-Ly7 monoclonal antibody reacts with human CD103, the alpha E integrin. CD103 non-covalently associates with integrin beta 7. CD103 is expressed mainly on intraepithelial lymphocytes and a small subset of peripheral lymphocytes. CD103 is also expressed by hairy cell leukemia (HCL) and by some chronic B cell lymphocytic leukemias. In vitro stimulation of human T cells with mitogens induces upregulation of CD103. Epithelial cell antigen, E-cadherin, binds to CD103 and mediates homing of lymphocytes to the intestinal epithelium.

Applications Reported: B-Ly7 has been reported for use in flow cytometric analysis.

Applications Tested: This B-Ly7 antibody has been pre-titrated and tested by flow cytometric analysis of stimulated normal human peripheral blood cells. This can be used at 5 µL (0.25 µg) per test. A test is defined as the amount (µg) of antibody that will stain a cell sample in a final volume of 100 µL. Cell number should be determined empirically but can range from 10⁵ to 10⁸ cells/test.

Excitation: 488-561 nm; **Emission:** 578 nm; **Laser:** Blue Laser, Green Laser, Yellow-Green Laser.

Filtration: 0.2 µm post-manufacturing filtered.



CD103 (Integrin alpha E) Antibody (12-1038-42) in Flow
Staining of PHA-stimulated normal human peripheral blood cells with Mouse IgG1 K Isotype Control PE (Product # 12-4714-81) (blue histogram) or Anti-Human CD103 (Integrin alpha E) PE (purple histogram). Total viable cells were used for analysis.

[View more figures on thermofisher.com](#)

7 References

Flow Cytometry (7)

Nature communications	Year 2021
Neoadjuvant anti-OX40 (MEDI6469) therapy in patients with head and neck squamous cell carcinoma activates and expands antigen-specific tumor-infiltrating T cells.	
"Published figure using CD103 (Integrin alpha E) monoclonal antibody (Product # 12-1038-42) in Flow Cytometry"	
Authors: Duhon R,Ballesteros-Merino C,Frye AK,Tran E,Rajamanickam V,Chang SC,Koguchi Y,Bifulco CB,Bernard B,Leidner RS,Curti BD,Fox BA,Urba WJ,Bell RB,Weinberg AD	

Genome biology	Year 2019
Distinct epigenetic features of tumor-reactive CD8+ T cells in colorectal cancer patients revealed by genome-wide DNA methylation analysis.	
"12-1038 was used in Flow cytometry/Cell sorting to show the CD8+ T cells of colorectal cancer patients can be influenced by distinct DNA methylation patterns."	
Authors: Yang R,Cheng S,Luo N,Gao R,Yu K,Kang B,Wang L,Zhang Q,Fang Q,Zhang L,Li C,He A,Hu X,Peng J,Ren X,Zhang Z	
	Species Human
	Dilution 1:100

[View more Flow references on thermofisher.com](#)

More applications with references on thermofisher.com

For Research Use Only. Not for use in diagnostic procedures. Not for resale without express authorization. Products are warranted to operate or perform substantially in conformance with published Product specifications in effect at the time of sale, as set forth in the Production documentation, specifications and/or accompanying package inserts ("Documentation"). No claim of suitability for use in applications regulated by FDA is made. The warranty provided herein is valid only when used by properly trained individuals. Unless otherwise stated in the Documentation, this warranty is limited to one year from date of shipment when the Product is subjected to normal, proper and intended usage. This warranty does not extend to anyone other than the Buyer. Any model or sample furnished to Buyer is merely illustrative of the general type and quality of goods and does not represent that any Product will conform to such model or sample. NO OTHER WARRANTIES, EXPRESS OR IMPLIED, ARE GRANTED INCLUDING WITHOUT LIMITATION, IMPLIED WARRANTIES OF MERCHANTABILITY, FITNESS FOR ANY PARTICULAR PURPOSE, OR NON-INFRINGEMENT. BUYER'S EXCLUSIVE REMEDY FOR NON-CONFORMING PRODUCTS DURING THE WARRANTY PERIOD IS LIMITED TO REPAIR, REPLACEMENT OF OR REFUND FOR THE NON-CONFORMING PRODUCT(S) AT SELLER'S SOLE OPTION. THERE IS NO OBLIGATION TO REPAIR, REPLACE OR REFUND FOR PRODUCTS AS THE RESULT OF (I) ACCIDENT, DISASTER OR EVENT OF FORCE MAJEURE, (II) MISUSE, FAULT OR NEGLIGENCE OF OR BY BUYER, (III) USE OF THE PRODUCTS IN A MANNER FOR WHICH THEY WERE NOT DESIGNED, OR (IV) IMPROPER STORAGE AND HANDLING OF THE PRODUCTS. Unless otherwise expressly stated on the Product or in the documentation accompanying the Product, the Product is intended for research only and is not to be used for any other purpose, including without limitation, unauthorized commercial uses, in vitro diagnostic uses, ex vivo or in vivo therapeutic uses, or any type of consumption by or application to human or animals.