

alpha Tubulin Monoclonal Antibody (DM1A), Biotin, eBioscience™

Product Details

Size	100 µg
Species Reactivity	Dog, Human, Mouse, Non-human primate, Pig, Rat
Published Species	Non-human primate
Host/Isotype	Mouse / IgG1, kappa
Recommended Isotype Control	Mouse IgG1 kappa Isotype Control (P3.6.2.8.1), Biotin, eBioscience™
Class	Monoclonal
Type	Antibody
Clone	DM1A
Conjugate	Biotin
Form	Liquid
Concentration	0.5 mg/mL
Purification	Affinity chromatography
Storage buffer	PBS, pH 7.2
Contains	0.09% sodium azide
Storage conditions	4° C, store in dark, DO NOT FREEZE!
RRID	AB_1723996

Applications	Tested Dilution	Publications
Western Blot (WB)	-	6 Publications
Immunohistochemistry (Paraffin) (IHC (P))	Assay-Dependent	-
Immunocytochemistry (ICC/IF)	Assay-Dependent	5 Publications
in situ PLA (PLA)	-	1 Publication

Product Specific Information

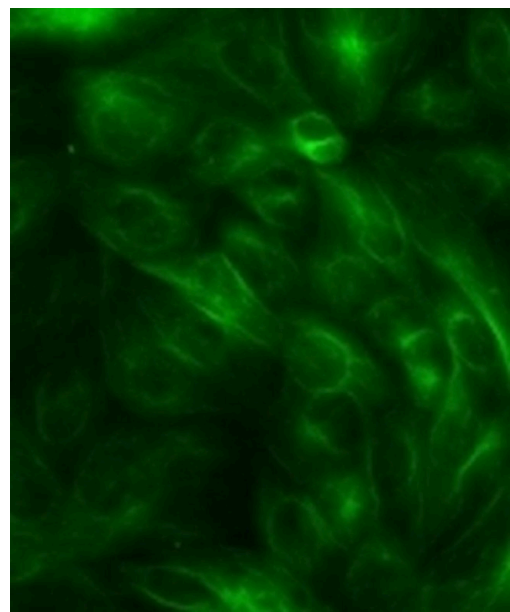
Description: The monoclonal antibody DM1a recognizes the 50kDa cytoskeletal protein alpha tubulin in a variety of species (human, mouse, rat, monkey, dog, pig, bovine, goat, hamster, guinea pig, kangaroo, amphibians, sea urchin, yeast and tobacco plants). Tubulin, the major component of microtubules, is a dimeric protein consisting of an alpha and beta subunit. Tubulin is a GTP-binding protein that can be modified by phosphorylation and acetylation resulting in assembly (polymerization) or disassembly (depolymerization). The dynamic nature of microtubules is most evident in the mitotic apparatus. The DM1a antibody recognizes the C-terminal end of the alpha tubulin isoform (amino acids 426-430).

Applications Reported: This DM1A antibody has been reported for use in immunocytochemistry, and immunohistochemical staining of formalin-fixed paraffin embedded tissue sections.

Applications Tested: This DM1A antibody has been tested by immunofluorescent staining of paraformaldehyde fixed and permeabilized cells. This can be used at less than or equal to 10 µg/mL. It is recommended that the antibody be titrated for optimal performance in the assay of interest.

Filtration: 0.2 µm post-manufacturing filtered.

Product Images For alpha Tubulin Monoclonal Antibody (DM1A), Biotin, eBioscience™



alpha Tubulin Antibody (13-4502-82) in ICC/IF
Immunocytochemistry of fixed and permeabilized MDCK cells using 10 µg/mL of Anti-alpha Tubulin Biotin followed by Streptavidin FITC (Product # 11-4317-87).

[View more figures on thermofisher.com](#)

12 References

Western Blot (6)

<p>Endocrine-related cancer</p> <p>Targeting EML4-ALK gene fusion variant 3 in thyroid cancer.</p> <p>"Published figure using alpha Tubulin monoclonal antibody (Product # 13-4502-82) in Western Blot"</p> <p>Authors: Aydemirli MD,van Eendenburg JDH,van Wezel T,Oosting J,Corver WE,Kapiteijn E,Morreau H</p>	<p>Year</p> <p>2021</p>
<p>PLoS genetics</p> <p>GATA factor-regulated solute carrier ensemble reveals a nucleoside transporter-dependent differentiation mechanism.</p> <p>"Published figure using alpha Tubulin monoclonal antibody (Product # 13-4502-82) in Western Blot"</p> <p>Authors: Zweifelhofer NM,Cai X,Liao R,Mao B,Conn DJ,Mehta C,Keles S,Xia Y,Bresnick EH</p>	<p>Year</p> <p>2020</p>

[View more WB references on thermofisher.com](#)

Immunocytochemistry (5)

<p>The Journal of cell biology</p> <p>Rapid degradation of GRASP55 and GRASP65 reveals their immediate impact on the Golgi structure.</p> <p>"Published figure using alpha Tubulin monoclonal antibody (Product # 13-4502-82) in Immunocytochemistry"</p> <p>Authors: Zhang Y,Seemann J</p>	<p>Year</p> <p>2021</p>
<p>Molecular neurobiology</p> <p>PKC-Mediated Phosphorylation of CRMP2 Regulates Dendritic Outgrowth in Cerebellar Purkinje Cells.</p> <p>"Published figure using alpha Tubulin monoclonal antibody (Product # 13-4502-82) in Immunocytochemistry"</p> <p>Authors: Winkler SC,Shimobayashi E,Kapfhammer JP</p>	<p>Year</p> <p>2020</p>

More applications with references on thermofisher.com

PLA (1)

For Research Use Only. Not for use in diagnostic procedures. Not for resale without express authorization. Products are warranted to operate or perform substantially in conformance with published Product specifications in effect at the time of sale, as set forth in the Production documentation, specifications and/or accompanying package inserts ("Documentation"). No claim of suitability for use in applications regulated by FDA is made. The warranty provided herein is valid only when used by properly trained individuals. Unless otherwise stated in the Documentation, this warranty is limited to one year from date of shipment when the Product is subjected to normal, proper and intended usage. This warranty does not extend to anyone other than the Buyer. Any model or sample furnished to Buyer is merely illustrative of the general type and quality of goods and does not represent that any Product will conform to such model or sample. NO OTHER WARRANTIES, EXPRESS OR IMPLIED, ARE GRANTED INCLUDING WITHOUT LIMITATION, IMPLIED WARRANTIES OF MERCHANTABILITY, FITNESS FOR ANY PARTICULAR PURPOSE, OR NON-INFRINGEMENT. BUYER'S EXCLUSIVE REMEDY FOR NON-CONFORMING PRODUCTS DURING THE WARRANTY PERIOD IS LIMITED TO REPAIR, REPLACEMENT OF OR REFUND FOR THE NON-CONFORMING PRODUCT(S) AT SELLER'S SOLE OPTION. THERE IS NO OBLIGATION TO REPAIR, REPLACE OR REFUND FOR PRODUCTS AS THE RESULT OF (I) ACCIDENT, DISASTER OR EVENT OF FORCE MAJEURE, (II) MISUSE, FAULT OR NEGLIGENCE OF OR BY BUYER, (III) USE OF THE PRODUCTS IN A MANNER FOR WHICH THEY WERE NOT DESIGNED, OR (IV) IMPROPER STORAGE AND HANDLING OF THE PRODUCTS. Unless otherwise expressly stated on the Product or in the documentation accompanying the Product, the Product is intended for research only and is not to be used for any other purpose, including without limitation, unauthorized commercial uses, in vitro diagnostic uses, ex vivo or in vivo therapeutic uses, or any type of consumption by or application to human or animals.