

CD283 (TLR3) Monoclonal Antibody (TLR3.7), eBioscience™

Product Details

Size	100 µg
Species Reactivity	Human
Published Species	Human
Host/Isotype	Mouse / IgG1, kappa
Class	Monoclonal
Type	Antibody
Clone	TLR3.7
Conjugate	Unconjugated
Form	Liquid
Concentration	0.5 mg/mL
Purification	Affinity chromatography
Storage buffer	PBS, pH 7.2
Contains	0.09% sodium azide
Storage conditions	4° C
RRID	AB_468556

Applications	Tested Dilution	Publications
Western Blot (WB)	Assay-Dependent	3 Publications
Immunohistochemistry (IHC)	-	2 Publications
Immunohistochemistry (Paraffin) (IHC (P))	Assay-Dependent	1 Publication
Immunohistochemistry (Frozen) (IHC (F))	Assay-Dependent	3 Publications
Immunocytochemistry (ICC/IF)	-	1 Publication
Flow Cytometry (Flow)	2 µg/test	11 Publications
Immunoprecipitation (IP)	Assay-Dependent	-
Miscellaneous PubMed (Misc)	-	1 Publication

Product Specific Information

Description: The TLR3.7 monoclonal antibody reacts with human Toll-like receptor 3 (TLR3). To date, at least twelve members of the Toll-like receptor family have been identified. This family of type I transmembrane proteins is characterized by an extracellular domain with leucine-rich repeats and a cytoplasmic domain with homology to the type I IL-1 receptor. In the innate immune response, TLRs recognize molecular patterns associated with microbial pathogens and induce antimicrobial activity. TLR3 recognizes double-stranded (ds)RNA, induces the activation of NF-kappaB through MyD88-dependent and -independent pathways, and the production of type I interferons (IFNs). TLR3.7 suppressed poly(I):poly(C)-mediated IFN-beta production by human fibroblasts naturally expressing TLR3 on their surface.

Applications Reported: This TLR3.7 antibody has been reported for use in intracellular staining followed by flow cytometric analysis, immunoprecipitation, immunoblotting (WB), immunohistology staining of frozen tissue sections, and immunohistology staining of paraffin embedded tissue sections. (Fluorochrome conjugated TLR3.7 is recommended for use in intracellular flow cytometry.) It has also been reported in in vitro inhibition of ligand binding. For optimal detection of TLR3 with this mAb by flow cytometry, PE-conjugated or Biotin-conjugated TLR3.7 (revealed with SAV-PE Product # 12-4312) are recommended.

Applications Tested: This TLR3.7 antibody has been tested by intracellular staining and flow cytometric analysis of A549 and

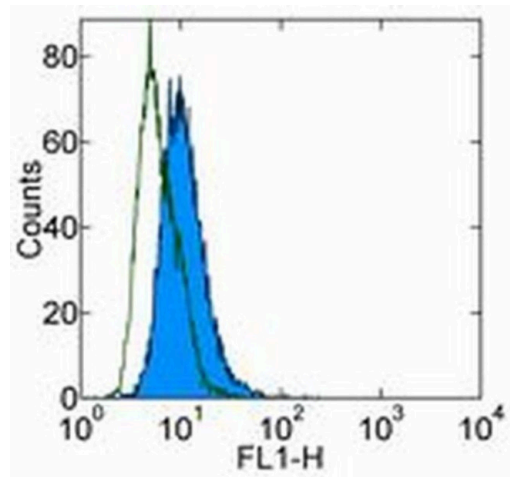
MRC5 cell lines to detect the very low level of this antigen on the surface. This can be used at less than or equal to 2.0 µg per test. A test is defined as the amount (µg) of antibody that will stain a cell sample in a final volume of 100 µL. Cell number should be determined empirically but can range from 10⁵ to 10⁸ cells/test. It is recommended that the antibody be carefully titrated for optimal performance in the assay of interest.

Purity: Greater than 90%, as determined by SDS-PAGE.

Aggregation: Less than 10%, as determined by HPLC.

Filtration: 0.2 µm post-manufacturing filtered.

Product Images For CD283 (TLR3) Monoclonal Antibody (TLR3.7), eBioscience™



CD283 (TLR3) Antibody (14-9039-82) in Flow
Staining of permeabilized A549 cell line with 1 µg of Purified Mouse IgG1 kappa Isotype Control (Product # 14-4714-82) (open histogram) or 1 µg of Purified anti-human TLR3 (TLR3.7) (filled histogram) followed by Anti-Mouse IgG FITC (Product # 11-4011-85). Total cells were used for analysis.

[View more figures on thermofisher.com](https://thermofisher.com)

Western Blot (3)

European journal of immunology	Year 2013
E-cadherin interactions are required for Langerhans cell differentiation.	Species Human
"14-9039 was used in Western Blotting to show that E-cadherin expressed by epidermal keratinocytes is crucial for differentiation of LCs."	
Authors: Mayumi N,Watanabe E,Norose Y,Watari E,Kawana S,Geijtenbeek TB,Takahashi H	
American journal of respiratory cell and molecular biology	Year 2007
Intracellular signaling mechanisms regulating toll-like receptor-mediated activation of eosinophils.	Species Human
"14-9039 was used in Western Blotting to demonstrate that eosinophils can be activated by microbe-derived molecules via Toll-like receptors."	
Authors: Wong CK,Cheung PF,Ip WK,Lam CW	

View more WB references on thermofisher.com

Immunohistochemistry (2)

The Journal of allergy and clinical immunology	Year 2014
The antimicrobial protein short palate, lung, and nasal epithelium clone 1 (SPLUNC1) is differentially modulated in eosinophilic and noneosinophilic chronic rhinosinusitis with nasal polyps.	Species Human
"14-9039 was used in Immunohistochemistry to compare expression of the innate immune molecule SPLUNC1 in patients with two different subsets of chronic rhinosinusitis with nasal polyps."	
Authors: Wei Y,Xia W,Ye X,Fan Y,Shi J,Wen W,Yang P,Li H	
American journal of physiology. Lung cellular and molecular physiology	Year 2006
Diesel exhaust enhances virus- and poly(I:C)-induced Toll-like receptor 3 expression and signaling in respiratory epithelial cells.	Species Human
"14-9039 was used in Immunohistochemistry to demonstrate that exposure of respiratory epithelial cells to diesel exhaust can increase the expression and function of TLR3."	
Authors: Ciencewicki J,Brighton L,Wu WD,Madden M,Jaspers I	
	Dilution 1:10

More applications with references on thermofisher.com

- IHC (P) (1)
- IHC (F) (3)
- ICC/IF (1)
- Flow (11)
- Misc (1)

For Research Use Only. Not for use in diagnostic procedures. Not for resale without express authorization. Products are warranted to operate or perform substantially in conformance with published Product specifications in effect at the time of sale, as set forth in the Production documentation, specifications and/or accompanying package inserts ("Documentation"). No claim of suitability for use in applications regulated by FDA is made. The warranty provided herein is valid only when used by properly trained individuals. Unless otherwise stated in the Documentation, this warranty is limited to one year from date of shipment when the Product is subjected to normal, proper and intended usage. This warranty does not extend to anyone other than the Buyer. Any model or sample furnished to Buyer is merely illustrative of the general type and quality of goods and does not represent that any Product will conform to such model or sample. NO OTHER WARRANTIES, EXPRESS OR IMPLIED, ARE GRANTED INCLUDING WITHOUT LIMITATION, IMPLIED WARRANTIES OF MERCHANTABILITY, FITNESS FOR ANY PARTICULAR PURPOSE, OR NON INFRINGEMENT. BUYER'S EXCLUSIVE REMEDY FOR NON-CONFORMING PRODUCTS DURING THE WARRANTY PERIOD IS LIMITED TO REPAIR, REPLACEMENT OF OR REFUND FOR THE NON-CONFORMING PRODUCT(S) AT SELLER'S SOLE OPTION. THERE IS NO OBLIGATION TO REPAIR, REPLACE OR REFUND FOR PRODUCTS AS THE RESULT OF (I) ACCIDENT, DISASTER OR EVENT OF FORCE MAJEURE, (II) MISUSE, FAULT OR NEGLIGENCE OF OR BY BUYER, (III) USE OF THE PRODUCTS IN A MANNER FOR WHICH THEY WERE NOT DESIGNED, OR (IV) IMPROPER STORAGE AND HANDLING OF THE PRODUCTS. Unless otherwise expressly stated on the Product or in the documentation accompanying the Product, the Product is intended for research only and is not to be used for any other purpose, including without limitation, unauthorized commercial uses, in vitro diagnostic uses, ex vivo or in vivo therapeutic uses, or any type of consumption by or application to human or animals.