

# Ly-6C Monoclonal Antibody (HK1.4), APC, eBioscience™

Product Details	
Size	100 µg
Species Reactivity	Mouse
Published Species	Mouse
Host/Isotype	Rat / IgG2c, kappa
Class	Monoclonal
Type	Antibody
Clone	HK1.4
Conjugate	APC
Excitation/Emission Max	651/660 nm
Form	Liquid
Concentration	0.2 mg/mL
Purification	Affinity chromatography
Storage buffer	PBS, pH 7.2
Contains	0.09% sodium azide
Storage conditions	4° C, store in dark, DO NOT FREEZE!
RRID	AB_1724153

Applications	Tested Dilution	Publications
Flow Cytometry (Flow)	0.125 µg/test	108 Publications

## Product Specific Information

**Description:** The monoclonal antibody HK1.4 recognizes mouse Ly-6C, a GPI-linked protein of the Ly6 family. Ly-6C is found on monocytes/macrophages, endothelial cells and granulocytes as well as a subset of lymphocytes. Some variation of expression is found on different mouse strains in regards to expression on CD4 and CD8 lymphocytes. These correlate to 2 alleles both of which are recognized by HK1.4: Ly6c.1 found on C57Bl/6 and SJL cells which results in staining of both CD4 and CD8 cells while Ly6-C.2 found on BALB/c and 3H/He results in staining of CD8, but not CD4 cells.

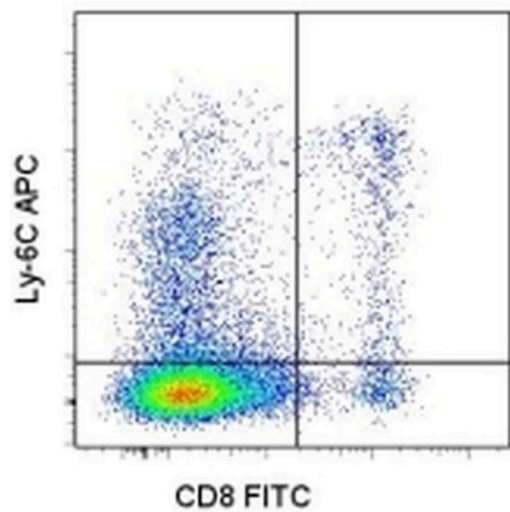
In vitro addition with HK1.4 antibody can increase proliferation and stimulate cytokine release.

**Applications Reported:** This HK1.4 antibody has been reported for use in flow cytometric analysis.

**Applications Tested:** This HK1.4 antibody has been tested by flow cytometric analysis of mouse splenocytes. This can be used at less than or equal to 0.125 µg per test. A test is defined as the amount (µg) of antibody that will stain a cell sample in a final volume of 100 µL. Cell number should be determined empirically but can range from 10<sup>5</sup> to 10<sup>8</sup> cells/test. It is recommended that the antibody be carefully titrated for optimal performance in the assay of interest.

**Excitation:** 633-647 nm; **Emission:** 660 nm; **Laser:** Red Laser.

**Filtration:** 0.2 µm post-manufacturing filtered.



**Ly-6C Antibody (17-5932-82) in Flow**  
Staining of BALB/c splenocytes with Anti-Mouse CD8a FITC (Product # 11-0081-82) and 0.06 µg of Anti-Mouse Ly-6C APC. Total viable cells were used for analysis.

[View more figures on thermofisher.com](#)

108 References

Flow Cytometry (108)

<p>Cancer immunology, immunotherapy : CII</p> <p><b>NLRP3 in tumor-associated macrophages predicts a poor prognosis and promotes tumor growth in head and neck squamous cell carcinoma.</b></p> <p>"17-5932-82 was used in Flow cytometry/Cell sorting to find that NLRP3 was highly expressed in tumor-associated macrophages (TAMs) in both mouse and human HNSCC, and the expression of NLRP3 was positively correlated with the density of TAMs according to immunohistochemistry, immunofluorescence, and flow cytometry analyses."</p> <p>Authors: Chen L,Wan SC,Mao L,Huang CF,Bu LL,Sun ZJ</p>	<p>Year 2023</p> <p>Species Mouse</p>
<p>Cancer nanotechnology</p> <p><b>Monocytes reprogrammed by tumor microparticle vaccine inhibit tumorigenesis and tumor development.</b></p> <p>"17-5932-82 was used in Flow cytometry/Cell sorting to provide novel vaccination strategy for the development of tumor vaccines and facilitate the application of T-MPs for clinic oncotherapy."</p> <p>Authors: Sun W,Dai L,Cao Y,Pan P,Zhi L,Wang X,Yuan X,Gao Z,Guo S,Liu G,Yin J,Xie L,Wang L,Wang Y,Li W,Li H,Jia Y</p>	<p>Year 2023</p> <p>Species Mouse</p>

[View more Flow references on thermofisher.com](#)

More applications with references on thermofisher.com

For Research Use Only. Not for use in diagnostic procedures. Not for resale without express authorization. Products are warranted to operate or perform substantially in conformance with published Product specifications in effect at the time of sale, as set forth in the Production documentation, specifications and/or accompanying package inserts ("Documentation"). No claim of suitability for use in applications regulated by FDA is made. The warranty provided herein is valid only when used by properly trained individuals. Unless otherwise stated in the Documentation, this warranty is limited to one year from date of shipment when the Product is subjected to normal, proper and intended usage. This warranty does not extend to anyone other than the Buyer. Any model or sample furnished to Buyer is merely illustrative of the general type and quality of goods and does not represent that any Product will conform to such model or sample. NO OTHER WARRANTIES, EXPRESS OR IMPLIED, ARE GRANTED INCLUDING WITHOUT LIMITATION, IMPLIED WARRANTIES OF MERCHANTABILITY, FITNESS FOR ANY PARTICULAR PURPOSE, OR NON INFRINGEMENT. BUYER'S EXCLUSIVE REMEDY FOR NON-CONFORMING PRODUCTS DURING THE WARRANTY PERIOD IS LIMITED TO REPAIR, REPLACEMENT OF OR REFUND FOR THE NON-CONFORMING PRODUCT(S) AT SELLER'S SOLE OPTION. THERE IS NO OBLIGATION TO REPAIR, REPLACE OR REFUND FOR PRODUCTS AS THE RESULT OF (I) ACCIDENT, DISASTER OR EVENT OF FORCE MAJEURE, (II) MISUSE, FAULT OR NEGLIGENCE OF OR BY BUYER, (III) USE OF THE PRODUCTS IN A MANNER FOR WHICH THEY WERE NOT DESIGNED, OR (IV) IMPROPER STORAGE AND HANDLING OF THE PRODUCTS. Unless otherwise expressly stated on the Product or in the documentation accompanying the Product, the Product is intended for research only and is not to be used for any other purpose, including without limitation, unauthorized commercial uses, in vitro diagnostic uses, ex vivo or in vivo therapeutic uses, or any type of consumption by or application to human or animals.