

# MSH2 Monoclonal Antibody (FE11)

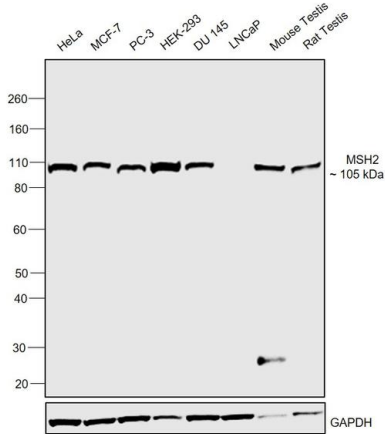
Product Details	
Size	50 µg
Species Reactivity	Human, Mouse, Rat
Published Species	Human
Host/Isotype	Mouse / IgG1, kappa
Class	Monoclonal
Type	Antibody
Clone	FE11
Conjugate	Unconjugated
Immunogen	C-terminal fragment of the human MSH2 protein
Form	Liquid
Concentration	0.5 mg/mL
Purification	Affinity chromatography
Storage buffer	PBS, pH 7.4
Contains	0.1% sodium azide
Storage conditions	-20°C
RRID	AB_2533139

Applications	Tested Dilution	Publications
Western Blot (WB)	1-2 µg/mL	1 Publication
Immunohistochemistry (IHC)	Assay-dependent	9 Publications
Immunohistochemistry (Paraffin) (IHC (P))	-	23 Publications
Immunocytochemistry (ICC/IF)	2-3 µg/mL	2 Publications
Immunoprecipitation (IP)	Assay-dependent	1 Publication
Miscellaneous PubMed (Misc)	-	6 Publications

Product Images For MSH2 Monoclonal Antibody (FE11)

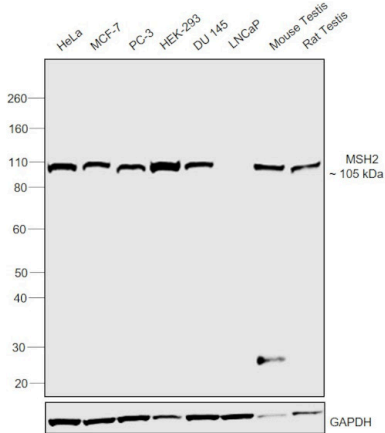
MSH2 Antibody (33-7900) in WB

Western blot was performed using Anti-MSH2 Monoclonal Antibody (FE11) (Product # 33-7900) and a 105kDa band corresponding to MSH2 was observed across cell lines tested except LNCaP. A homozygous deletion of exons of the MSH2 gene in LNCaP results in the loss of MSH2 protein expression. Nuclear enriched extracts (15 µg lysate) of HeLa (Lane 1), MCF7 (Lane 2), PC-3 (Lane 3), HEK-293 (Lane 4), DU 145 (Lane 5), LNCaP (Lane 6) and tissue extracts of Mouse Testis (Lane 7) and Rat Testis (Lane 8) were electrophoresed using NuPAGE™ 4-12% Bis-Tris Protein Gel (Product # NP0322BOX). Resolved proteins were then transferred onto a Nitrocellulose membrane (Product # IB23001) by iBlot® 2 Dry Blotting System (Product # IB21001). The blot was probed with the primary antibody (1 µg/mL) and detected by chemiluminescence with Goat anti-Mouse IgG (H+L) Superclonal™ Recombinant Secondary Antibody, HRP (Product # A28177, 1:4000 dilution) using the iBright FL 1000 (Product # A32752). Chemiluminescent detection was performed using Novex® ECL Chemiluminescent Substrate Reagent Kit (Product # WP20005).



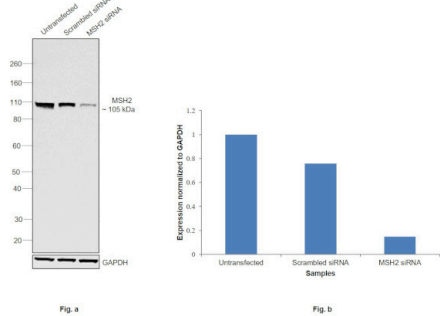
MSH2 Antibody (33-7900)

Antibody specificity was demonstrated by detection of differential basal expression of the target across cell lines owing to their inherent genetic constitution. Relative expression of MSH2 was observed in HeLa, MCF-7, PC-3, HEK-293 and DU145 in comparison to LNCaP using Anti-MSH2 Monoclonal Antibody (FE11) (Product # 33-7900) in Western Blot. {RE}



MSH2 Antibody (33-7900)

Antibody specificity was demonstrated by siRNA mediated knockdown of target protein. HeLa cells were transfected with MSH2 siRNA and decrease in signal intensity was observed in Western Blot application using Anti-MSH2 Monoclonal Antibody (FE11) (Product # 33-7900). {KD}



View more figures on [thermofisher.com](https://thermofisher.com)

Western Blot (1)

<p>Journal of agricultural and food chemistry</p> <p><b>Human gut flora-fermented nondigestible fraction from cooked bean (<i>Phaseolus vulgaris</i> L.) modifies protein expression associated with apoptosis, cell cycle arrest, and proliferation in human adenocarcinoma colon cancer cells.</b></p> <p>"33-7900 was used in western blot to assess the effects of fermentation products produced by the human gut flora on human adenocarcinoma colon cancer cells."</p> <p>Authors: Campos-Vega R,García-Gasca T,Guevara-Gonzalez R,Ramos-Gomez M,Oomah BD,Loarca-Piña G</p>	<p>Year 2012</p> <p>Species Human</p>
--	---

Immunohistochemistry (9)

<p>PloS one</p> <p><b>Genomic analysis for the prediction of prognosis in small-bowel cancer.</b></p> <p>"33-7900 was used in Immunohistochemistry to identify the clinicopathological features and genomic variants associated with its prognosis and recurrence."</p> <p>Authors: Tsuboi A,Urabe Y,Oka S,Sumioka A,lío S,Yuge R,Hayashi R,Kuwai T,Kitadai Y,Kuraoka K,Arihiro K,Tanaka S,Chayama K</p>	<p>Year 2021</p> <p>Species Human</p> <p>Dilution 1:200</p>
<p>JCI insight</p> <p><b>Germline mutations in a DNA repair pathway are associated with familial colorectal cancer.</b></p> <p>"33-7900 was used in Immunohistochemistry to identify rare high-penetrance mutations in new genes for the underlying predisposition in familial colorectal cancer."</p> <p>Authors: Xu P,Sun D,Gao Y,Jiang Y,Zhong M,Zhao G,Chen J,Wang Z,Liu Q,Hong J,Chen H,Chen YX,Fang JY</p>	<p>Year 2021</p> <p>Species Human</p> <p>Dilution 1:150</p>

View more IHC references on thermofisher.com

Immunohistochemistry (Paraffin) (23)

<p>Advances in clinical and experimental medicine : official organ Wroclaw Medical University</p> <p><b>Studies on selected molecular factors in endometrial cancers.</b></p> <p>"33-7900 was used in Immunohistochemistry on paraffin embedded tissues to study the molecular factors linked to heterogeneity of endometrial carcinomas."</p> <p>Authors: Markowska A,Szarszewska M,urawski J,Sajdak S,Knapp P,Grybo A,Olejek A,Bednarek W,Roszak A,Jówik M,Marszaek A,Filas V,Wójcik-Krowiranda K,Mdry R,Markowska J,Sozaski R</p>	<p>Year 2018</p> <p>Species Human</p>
--	---

View more IHC (P) references on thermofisher.com

More applications with references on thermofisher.com

- ICC/IF (2)
- IP (1)
- Misc (6)

For Research Use Only. Not for use in diagnostic procedures. Not for resale without express authorization. Products are warranted to operate or perform substantially in conformance with published Product specifications in effect at the time of sale, as set forth in the Production documentation, specifications and/or accompanying package inserts ("Documentation"). No claim of suitability for use in applications regulated by FDA is made. The warranty provided herein is valid only when used by properly trained individuals. Unless otherwise stated in the Documentation, this warranty is limited to one year from date of shipment when the Product is subjected to normal, proper and intended usage. This warranty does not extend to anyone other than the Buyer. Any model or sample furnished to Buyer is merely illustrative of the general type and quality of goods and does not represent that any Product will conform to such model or sample. NO OTHER WARRANTIES, EXPRESS OR IMPLIED, ARE GRANTED INCLUDING WITHOUT LIMITATION, IMPLIED WARRANTIES OF MERCHANTABILITY, FITNESS FOR ANY PARTICULAR PURPOSE, OR NON-INFRINGEMENT. BUYER'S EXCLUSIVE REMEDY FOR NON-CONFORMING PRODUCTS DURING THE WARRANTY PERIOD IS LIMITED TO REPAIR, REPLACEMENT OF OR REFUND FOR THE NON-CONFORMING PRODUCT(S) AT SELLER'S SOLE OPTION. THERE IS NO OBLIGATION TO REPAIR, REPLACE OR REFUND FOR PRODUCTS AS THE RESULT OF (I) ACCIDENT, DISASTER OR EVENT OF FORCE MAJEURE, (II) MISUSE, FAULT OR NEGLIGENCE OF OR BY BUYER, (III) USE OF THE PRODUCTS IN A MANNER FOR WHICH THEY WERE NOT DESIGNED, OR (IV) IMPROPER STORAGE AND HANDLING OF THE PRODUCTS. Unless otherwise expressly stated on the Product or in the documentation accompanying the Product, the Product is intended for research only and is not to be used for any other purpose, including without limitation, unauthorized commercial uses, in vitro diagnostic uses, ex vivo or in vivo therapeutic uses, or any type of consumption by or application to human or animals.