

JPH1 Polyclonal Antibody

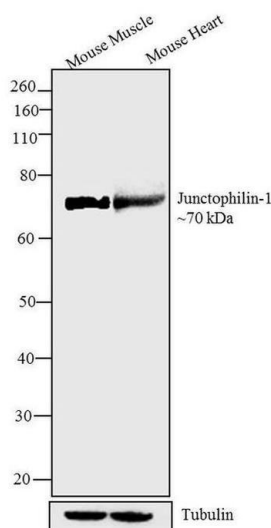
| Product Details | |
|--------------------|---|
| Size | 100 µg |
| Species Reactivity | Mouse, Rat |
| Published Species | Rabbit, Rat, Human, Mouse |
| Host/Isotype | Rabbit / IgG |
| Class | Polyclonal |
| Type | Antibody |
| Conjugate | Unconjugated |
| Immunogen | Synthetic peptide derived from the C-terminal region of the mouse junctophilin-1 (JP-1, junctophilin type 1, JPH1) protein, which differs from rat by one non-conservative amino acid replacement |
| Form | Liquid |
| Concentration | 0.25 mg/mL |
| Purification | Antigen affinity chromatography |
| Storage buffer | PBS, pH 7.4 |
| Contains | 0.1% sodium azide |
| Storage conditions | -20°C |
| RRID | AB_2533470 |

| Applications | Tested Dilution | Publications |
|--|-----------------|----------------|
| Western Blot (WB) | 2-3 µg/mL | 7 Publications |
| Immunohistochemistry (IHC) | - | 3 Publications |
| Immunohistochemistry (Paraffin) (IHC (P)) | 1:50 | 1 Publication |
| Immunohistochemistry (PFA fixed) (IHC (PFA)) | - | 0 Publication |
| Immunohistochemistry (Frozen) (IHC (F)) | Assay-dependent | - |
| Immunocytochemistry (ICC/IF) | - | 2 Publications |
| Miscellaneous PubMed (Misc) | - | 1 Publication |

Product Images For JPH1 Polyclonal Antibody

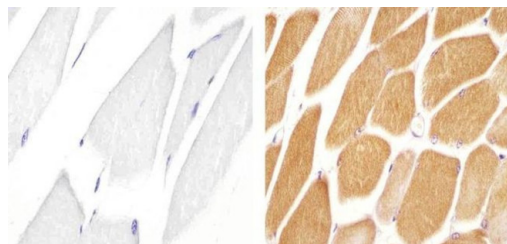
JPH1 Antibody (40-5100) in WB

Western blot analysis was performed on tissue extracts (30 µg lysate) of Mouse Muscle (Lane 1), and Mouse Heart (lane 2). The blots were probed with Anti-Junctophilin-1 Rabbit Polyclonal Antibody (Product # 40-5100, 2 µg/mL) and detected by chemiluminescence Goat Anti-Rabbit IgG Secondary Antibody, HRP conjugate (Product # G-21234, 1:5000 dilution). A 70 kDa band corresponding to Junctophilin-1 was observed across cell lines tested. Known quantity of protein samples were electrophoresed using Novex® NuPAGE® 10 % Bis-Tris gel (Product # NP0301BOX), XCell SureLock™ Electrophoresis System (Product # EI0002) and Novex® Sharp Pre-Stained Protein Standard (Product # LC5800). Resolved proteins were then transferred onto a nitrocellulose membrane by iBlot® 2 Dry Blotting System (Product # IB21001). The membrane was probed with the relevant primary and secondary Antibody following blocking with 5 % skimmed milk. Chemiluminescent detection was performed using Pierce™ ECL Western Blotting Substrate (Product # 32106).



JPH1 Antibody (40-5100) in IHC (P)

Immunohistochemistry analysis of Junctophilin-1 showing staining in the cytoplasm of paraffin-embedded mouse skeletal muscle tissue (right) compared to a negative control without primary antibody (left). To expose target proteins, antigen retrieval was performed using 10mM sodium citrate (pH 6.0), microwaved for 8-15 min. Following antigen retrieval, tissues were blocked in 3% H₂O₂-methanol for 15 min at room temperature, washed with ddH₂O and PBS, and then probed with a Anti- Junctophilin-1 Polyclonal Antibody (Product # 40-5100) diluted in 3% BSA-PBS at a dilution of 1:50 overnight at 4°C in a humidified chamber. Tissues were washed extensively in PBST and detection was performed using an HRP-conjugated secondary antibody followed by colorimetric detection using a DAB kit. Tissues were counterstained with hematoxylin and dehydrated with ethanol and xylene to prep for mounting.



JPH1 Antibody (40-5100) in IHC

Immunofluorescent staining of mouse hippocampal dentate gyrus using Junctophilin-1 (C-term) Polyclonal Antibody, Rabbit (Product # 40-5100). Image courtesy of James I. Nagy, PhD, University of Manitoba, Canada



[View more figures on thermofisher.com](https://www.thermofisher.com)

Western Blot (7)

| | |
|---|---------------------|
| Physiological reports | Year 2018 |
| I-arginine ingestion inhibits eccentric contraction-induced proteolysis and force deficit via S-nitrosylation of calpain. | Species Rat |
| "Published figure using JPH1 polyclonal antibody (Product # 40-5100) in Western Blot" | Dilution 1:1,000 |
| Authors: Kanzaki K,Watanabe D,Aibara C,Kawakami Y,Yamada T,Takahashi Y,Wada M | |
| Journal of applied physiology (Bethesda, Md. : 1985) | Year 2017 |
| Role of calpain in eccentric contraction-induced proteolysis of Ca²⁺-regulatory proteins and force depression in rat fast-twitch skeletal muscle. | Species Rat |
| "40-5100 was used in Western Blotting to study the in vivo effects of eccentric contraction on calpain-dependent proteolysis of Ca2+ regulatory proteins and force production in fast twitch skeletal muscles." | Dilution 1:500 |
| Authors: Kanzaki K,Watanabe D,Kuratani M,Yamada T,Matsunaga S,Wada M | |

View more WB references on thermofisher.com

Immunohistochemistry (3)

| | |
|---|------------------|
| International journal of nanomedicine | Year 2016 |
| Evaluation of adipose-derived stem cells for tissue-engineered muscle repair construct-mediated repair of a murine model of volumetric muscle loss injury. | Species Human |
| "Published figure using JPH1 polyclonal antibody (Product # 40-5100) in Immunohistochemistry" | |
| Authors: Kesireddy V | |
| Journal of the Royal Society, Interface | Year 2014 |
| Observation of the molecular organization of calcium release sites in fast- and slow-twitch skeletal muscle with nanoscale imaging. | |
| "Published figure using JPH1 polyclonal antibody (Product # 40-5100) in Immunofluorescence" | |
| Authors: Jayasinghe ID,Munro M,Baddeley D,Launikonis BS,Soeller C | |

View more IHC references on thermofisher.com

More applications with references on thermofisher.com

- IHC (P) (1)
- ICC/IF (2)
- Misc (1)

For Research Use Only. Not for use in diagnostic procedures. Not for resale without express authorization. Products are warranted to operate or perform substantially in conformance with published Product specifications in effect at the time of sale, as set forth in the Production documentation, specifications and/or accompanying package inserts ("Documentation"). No claim of suitability for use in applications regulated by FDA is made. The warranty provided herein is valid only when used by properly trained individuals. Unless otherwise stated in the Documentation, this warranty is limited to one year from date of shipment when the Product is subjected to normal, proper and intended usage. This warranty does not extend to anyone other than the Buyer. Any model or sample furnished to Buyer is merely illustrative of the general type and quality of goods and does not represent that any Product will conform to such model or sample. NO OTHER WARRANTIES, EXPRESS OR IMPLIED, ARE GRANTED INCLUDING WITHOUT LIMITATION, IMPLIED WARRANTIES OF MERCHANTABILITY, FITNESS FOR ANY PARTICULAR PURPOSE, OR NON-INFRINGEMENT. BUYER'S EXCLUSIVE REMEDY FOR NON-CONFORMING PRODUCTS DURING THE WARRANTY PERIOD IS LIMITED TO REPAIR, REPLACEMENT OF OR REFUND FOR THE NON-CONFORMING PRODUCT(S) AT SELLER'S SOLE OPTION. THERE IS NO OBLIGATION TO REPAIR, REPLACE OR REFUND FOR PRODUCTS AS THE RESULT OF (i) ACCIDENT, DISASTER OR EVENT OF FORCE MAJEURE, (ii) MISUSE, FAULT OR NEGLIGENCE OF OR BY BUYER, (iii) USE OF THE PRODUCTS IN A MANNER FOR WHICH THEY WERE NOT DESIGNED, OR (iv) IMPROPER STORAGE AND HANDLING OF THE PRODUCTS. Unless otherwise expressly stated on the Product or in the documentation accompanying the Product, the Product is intended for research only and is not to be used for any other purpose, including without limitation, unauthorized commercial uses, in vitro diagnostic uses, ex vivo or in vivo therapeutic uses, or any type of consumption by or application to human or animals.