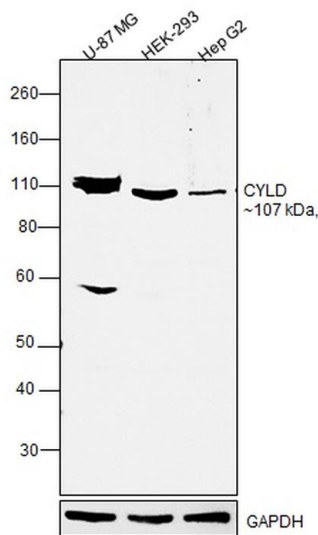


CYLD Monoclonal Antibody (733)

Product Details	
Size	100 µg
Species Reactivity	Bovine, Horse, Human, Mouse, Non-human primate, Rat
Published Species	Mouse
Host/Isotype	Mouse / IgG1
Class	Monoclonal
Type	Antibody
Clone	733
Conjugate	Unconjugated
Immunogen	Recombinant protein derived from the N-terminus of human CYLD protein
Form	Liquid
Concentration	0.5 mg/mL
Purification	Protein A
Storage buffer	PBS, pH 7.4
Contains	0.1% sodium azide
Storage conditions	Store at 4°C short term. For long term storage, store at -20°C, avoiding freeze/thaw cycles.
RRID	AB_2533539

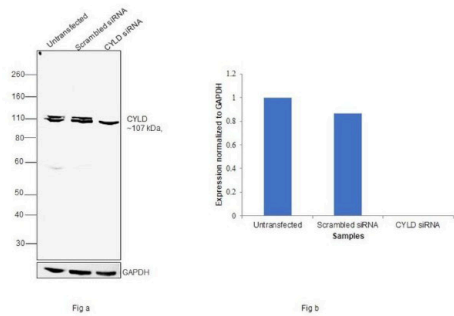
Applications	Tested Dilution	Publications
Western Blot (WB)	1:1,000	2 Publications
Immunohistochemistry (Paraffin) (IHC (P))	1:10-1:50	-
Immunocytochemistry (ICC/IF)	1 µg/mL	-

Product Images For CYLD Monoclonal Antibody (733)



CYLD Antibody (43-7700) in WB

Western blot was performed using Anti-CYLD Monoclonal Antibody (733) (Product # 43-7700) and a 107kDa band corresponding to CYLD was observed across cell lines tested. Whole cell extracts (30 µg lysate) of U-87 MG (Lane 1), HEK-293 (Lane 2) and Hep G2 (Lane 3) were electrophoresed using NuPAGE™ 10% Bis-Tris Protein Gel (Product # NP0301BOX). Resolved proteins were then transferred onto a Nitrocellulose membrane (Product # IB23001) by iBlot® 2 Dry Blotting System (Product # IB21001). The blot was probed with the primary antibody (1:1000 dilution) and detected by chemiluminescence with Goat anti-Mouse IgG (H+L) Superclonal™ Recombinant Secondary Antibody, HRP (Product # A28177, 1:4000 dilution) using the iBright FL 1000 (Product # A32752). Chemiluminescent detection was performed using Novex® ECL Chemiluminescent Substrate Reagent Kit (Product # WP20005).



CYLD Antibody (43-7700)

Antibody specificity was demonstrated by siRNA mediated knockdown of target protein. Hep G2 cells were transfected with CYLD siRNA and decrease in signal intensity was observed in Western Blot application using Anti-CYLD Monoclonal Antibody (733) (Product # 43-7700). {KD}

CYLD Antibody (43-7700) in ICC/IF

Immunofluorescence analysis of CYLD was done on 70% confluent log phase SHSY5Y cells. The cells were fixed with 4% paraformaldehyde for 15 minutes, permeabilized with 0.25% Triton™ X-100 for 10 minutes, and blocked with 5% BSA for 1 hour at room temperature. The cells were labeled with CYLD Mouse Monoclonal Antibody (Product # 43-7700) at 1 µg/mL in 1% BSA and incubated for 3 hours at room temperature and then labeled with Goat anti-Mouse IgG (H+L) Superclonal™ Secondary Antibody, Alexa Fluor® 488 conjugate (Product # A28175) at a dilution of 1:2000 for 45 minutes at room temperature (Panel a: green). Nuclei (Panel b: blue) were stained with SlowFade® Gold Antifade Mountant with DAPI (Product # S36938). F-actin (Panel c: red) was stained with Alexa Fluor® 555 Rhodamine Phalloidin (Product # R415, 1:300). Panel d is a merged image showing cytoplasmic localization. Panel e is a no primary antibody control. The images were captured at 60X magnification.

View more figures on thermofisher.com

Western Blot (2)

<p>BioMed research international</p> <p>Necroptosis mediates TNF-induced toxicity of hippocampal neurons.</p> <p>"Published figure using CYLD monoclonal antibody (Product # 43-7700) in Western Blot"</p> <p>Authors: Liu S,Wang X,Li Y,Xu L,Yu X,Ge L,Li J,Zhu Y,He S</p>	<p>Year 2015</p> <p>Species Mouse</p>
<p>Proceedings of the National Academy of Sciences of the United States of America</p> <p>Direct activation of RIP3/MLKL-dependent necrosis by herpes simplex virus 1 (HSV-1) protein ICP6 triggers host antiviral defense.</p> <p>"Published figure using CYLD monoclonal antibody (Product # 43-7700) in Western Blot"</p> <p>Authors: Wang X,Li Y,Liu S,Yu X,Li L,Shi C,He W,Li J,Xu L,Hu Z,Yu L,Yang Z,Chen Q,Ge L,Zhang Z,Zhou B,Jiang X,Chen S,He S</p>	<p>Year 2014</p> <p>Species Mouse</p>

For Research Use Only. Not for use in diagnostic procedures. Not for resale without express authorization. Products are warranted to operate or perform substantially in conformance with published Product specifications in effect at the time of sale, as set forth in the Production documentation, specifications and/or accompanying package inserts ("Documentation"). No claim of suitability for use in applications regulated by FDA is made. The warranty provided herein is valid only when used by properly trained individuals. Unless otherwise stated in the Documentation, this warranty is limited to one year from date of shipment when the Product is subjected to normal, proper and intended usage. This warranty does not extend to anyone other than the Buyer. Any model or sample furnished to Buyer is merely illustrative of the general type and quality of goods and does not represent that any Product will conform to such model or sample. NO OTHER WARRANTIES, EXPRESS OR IMPLIED, ARE GRANTED INCLUDING WITHOUT LIMITATION, IMPLIED WARRANTIES OF MERCHANTABILITY, FITNESS FOR ANY PARTICULAR PURPOSE, OR NON INFRINGEMENT. BUYER'S EXCLUSIVE REMEDY FOR NON-CONFORMING PRODUCTS DURING THE WARRANTY PERIOD IS LIMITED TO REPAIR, REPLACEMENT OF OR REFUND FOR THE NON-CONFORMING PRODUCT(S) AT SELLER'S SOLE OPTION. THERE IS NO OBLIGATION TO REPAIR, REPLACE OR REFUND FOR PRODUCTS AS THE RESULT OF (i) ACCIDENT, DISASTER OR EVENT OF FORCE MAJEURE, (ii) MISUSE, FAULT OR NEGLIGENCE OF OR BY BUYER, (iii) USE OF THE PRODUCTS IN A MANNER FOR WHICH THEY WERE NOT DESIGNED, OR (iv) IMPROPER STORAGE AND HANDLING OF THE PRODUCTS. Unless otherwise expressly stated on the Product or in the documentation accompanying the Product, the Product is intended for research only and is not to be used for any other purpose, including without limitation, unauthorized commercial uses, in vitro diagnostic uses, ex vivo or in vivo therapeutic uses, or any type of consumption by or application to human or animals.