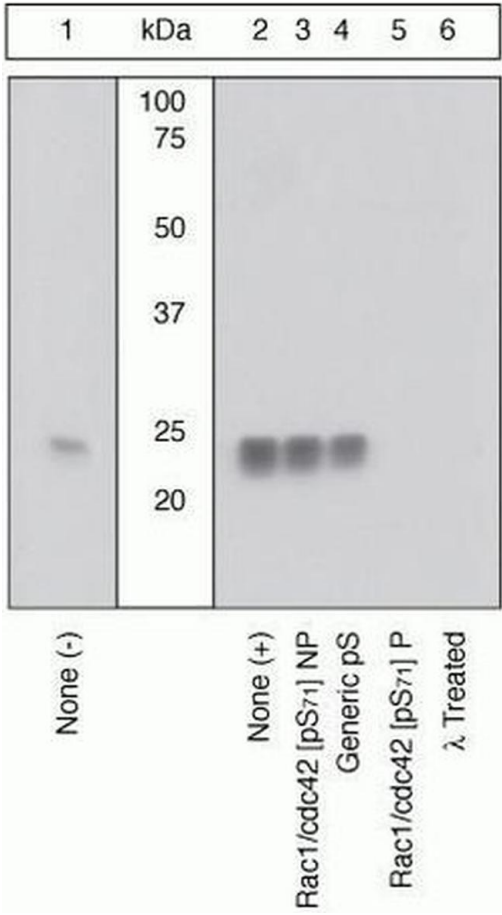


Phospho-RAC1/CDC42 (Ser71) Polyclonal Antibody

Product Details	
Size	100 µL
Species Reactivity	Human
Published Species	Human
Host/Isotype	Rabbit / IgG
Class	Polyclonal
Type	Antibody
Conjugate	Unconjugated
Immunogen	The antiserum was produced against a chemically synthesized phosphopeptide derived from a region of human Rac1-protein that contains serine 71. The sequence is conserved in human and mouse Rac 1, 2, and 3, and cdc42 human, mouse, rat, dog and frog.
Form	Liquid
Purification	Antigen affinity chromatography
Storage buffer	Dulbecco's PBS, pH 7.3, with 1mg/mL BSA
Contains	0.05% sodium azide
Storage conditions	-20°C
RRID	AB_2533607

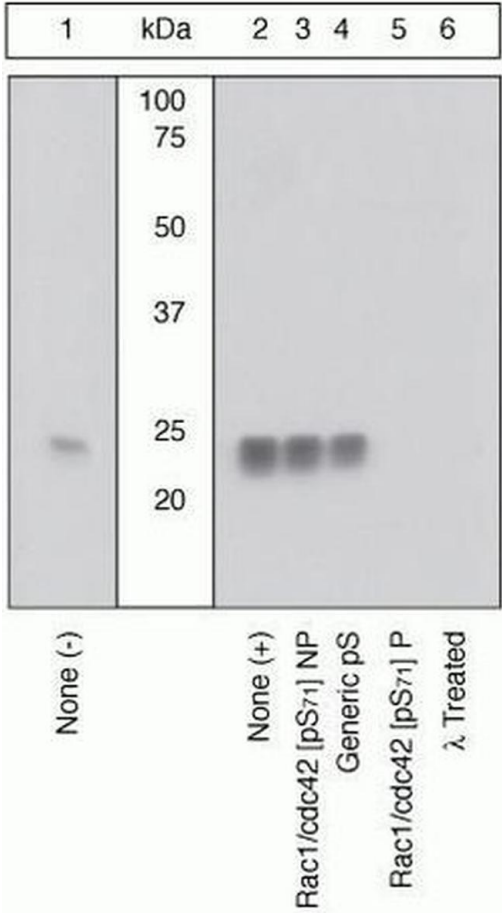
Applications	Tested Dilution	Publications
Western Blot (WB)	1:1,000	-
Immunohistochemistry (Paraffin) (IHC (P))	1:10-1:100	1 Publication

Product Images For Phospho-RAC1/CDC42 (Ser71) Polyclonal Antibody



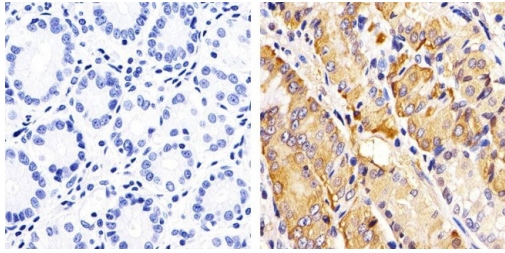
Phospho-RAC1/CDC42 (Ser71) Antibody (44-214G) in WB

Peptide Competition and Phosphatase Treatment. Lysates prepared from A431 cells left unstimulated (1) or stimulated with EGF (2-6) were resolved by SDS-PAGE on a 10% polyacrylamide gel and transferred to PVDF. Membranes were either not treated (1-5) or treated with lambda phosphatase (6), blocked with a 5% BSA-TBST buffer for one hour at room temperature, and incubated with Rac1/cdc42 [pS71] antibody (Product # 44-214G) for two hours at room temperature in a 3% BSA-TBST buffer, following prior incubation with: no peptide (1, 2, 6), the non-phosphopeptide corresponding to the immunogen (3), a generic phosphoserine containing peptide (4), or, the phosphopeptide immunogen (5). After washing, membranes were incubated with goat F(ab')₂ anti-rabbit IgG HRP conjugate (Product # ALI4404) and bands were detected using the Pierce SuperSignal™ method.



Phospho-RAC1/CDC42 (Ser71) Antibody (44-214G)

Altered expression of proteins upon cell treatment demonstrates antibody specificity. Western blot analysis of Phospho-RAC1/CDC42 (Ser71) using Phospho-RAC1/CDC42 (Ser71) Rabbit Polyclonal Antibody (Product # 44-214G) shows increase in the expression level of Phospho-RAC1/CDC42 (Ser71) in A431 cell line upon EGF treatment. {TM}



Phospho-RAC1/CDC42 (Ser71) Antibody (44-214G) in IHC (P)
Immunohistochemistry analysis of Rac1/cdc42 (pS71) showing staining in the cytoplasm of paraffin-embedded human stomach tissue (right) compared to a negative control without primary antibody (left). To expose target proteins, antigen retrieval was performed using 10mM sodium citrate (pH 6.0), microwaved for 8-15 min. Following antigen retrieval, tissues were blocked in 3% H2O2-methanol for 15 min at room temperature, washed with ddH2O and PBS, and then probed with a Rac1/cdc42 (pS71) polyclonal antibody (Product # 44-214G) diluted in 3% BSA-PBS at a dilution of 1:20 overnight at 4°C in a humidified chamber. Tissues were washed extensively in PBST and detection was performed using an HRP-conjugated secondary antibody followed by colorimetric detection using a DAB kit. Tissues were counterstained with hematoxylin and dehydrated with ethanol and xylene to prep for mounting.

View more figures on thermofisher.com

1 Reference

Immunohistochemistry (Paraffin) (1)

Molecular cancer research : MCR	Year 2017
Role of Rac1 Pathway in Epithelial-to-Mesenchymal Transition and Cancer Stem-like Cell Phenotypes in Gastric Adenocarcinoma.	Species Human
"44214G was used in immunohistochemistry - paraffin section to investigate Rac1 activity and inhibition in gastric adenocarcinoma cells and mouse xenograft models for epithelial-to-mesenchymal transition and cancer stem-like cell phenotypes"	
Authors: Yoon C,Cho SJ,Chang KK,Park DJ,Ryeom SW,Yoon SS	

For Research Use Only. Not for use in diagnostic procedures. Not for resale without express authorization. Products are warranted to operate or perform substantially in conformance with published Product specifications in effect at the time of sale, as set forth in the Production documentation, specifications and/or accompanying package inserts ("Documentation"). No claim of suitability for use in applications regulated by FDA is made. The warranty provided herein is valid only when used by properly trained individuals. Unless otherwise stated in the Documentation, this warranty is limited to one year from date of shipment when the Product is subjected to normal, proper and intended usage. This warranty does not extend to anyone other than the Buyer. Any model or sample furnished to Buyer is merely illustrative of the general type and quality of goods and does not represent that any Product will conform to such model or sample. NO OTHER WARRANTIES, EXPRESS OR IMPLIED, ARE GRANTED INCLUDING WITHOUT LIMITATION, IMPLIED WARRANTIES OF MERCHANTABILITY, FITNESS FOR ANY PARTICULAR PURPOSE, OR NON-INFRINGEMENT. BUYER'S EXCLUSIVE REMEDY FOR NON-CONFORMING PRODUCTS DURING THE WARRANTY PERIOD IS LIMITED TO REPAIR, REPLACEMENT OF OR REFUND FOR THE NON-CONFORMING PRODUCT(S) AT SELLER'S SOLE OPTION. THERE IS NO OBLIGATION TO REPAIR, REPLACE OR REFUND FOR PRODUCTS AS THE RESULT OF (I) ACCIDENT, DISASTER OR EVENT OF FORCE MAJEURE, (II) MISUSE, FAULT OR NEGLIGENCE OF OR BY BUYER, (III) USE OF THE PRODUCTS IN A MANNER FOR WHICH THEY WERE NOT DESIGNED, OR (IV) IMPROPER STORAGE AND HANDLING OF THE PRODUCTS. Unless otherwise expressly stated on the Product or in the documentation accompanying the Product, the Product is intended for research only and is not to be used for any other purpose, including without limitation, unauthorized commercial uses, in vitro diagnostic uses, ex vivo or in vivo therapeutic uses, or any type of consumption by or application to human or animals.