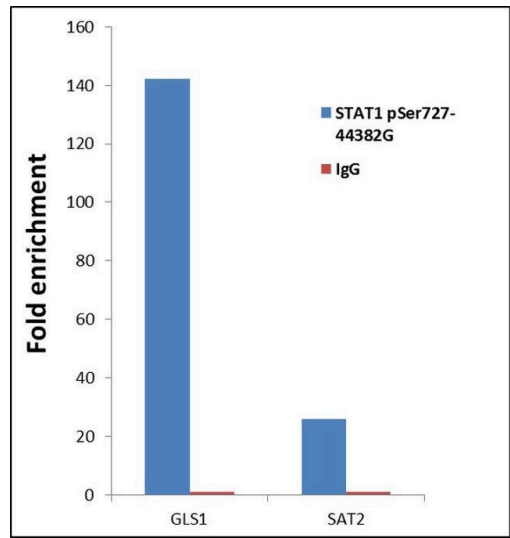


# Phospho-STAT1 (Ser727) Polyclonal Antibody

Product Details	
Size	100 µL
Species Reactivity	Human, Mouse
Published Species	Human, Mouse
Host/Isotype	Rabbit / IgG
Class	Polyclonal
Type	Antibody
Conjugate	Unconjugated
Immunogen	The antiserum was produced against a chemically synthesized phosphopeptide derived from the region of human STAT1 that contains serine 727. The sequence is conserved in mouse.
Form	Liquid
Purification	Antigen affinity chromatography
Storage buffer	Dulbecco's PBS, pH 7.3, with 1mg/mL BSA
Contains	0.05% sodium azide
Storage conditions	-20°C
RRID	AB_2533644

Applications	Tested Dilution	Publications
Western Blot (WB)	1:1,000	6 Publications
Immunohistochemistry (Paraffin) (IHC (P))	1:20-1:200	-
Immunocytochemistry (ICC/IF)	1:250	1 Publication
Immunoprecipitation (IP)	-	1 Publication
ChIP assay (ChIP)	10 µL	1 Publication

Product Images For Phospho-STAT1 (Ser727) Polyclonal Antibody



**Phospho-STAT1 (Ser727) Antibody (44-382G)**

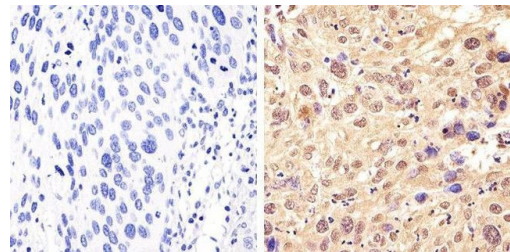
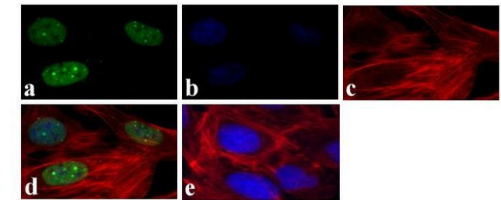
Antibody specificity was demonstrated through detection of enrichment of the target protein at specific gene loci. Chromatin Immunoprecipitation (ChIP) was performed using anti-STAT1 [pSer727] Rabbit polyclonal antibody (Product # 44-382G) with relevant positive (GLS1) and negative target genes/ binding sites (SAT2) {RE}

**Phospho-STAT1 (Ser727) Antibody (44-382G) in ICC/IF**

Immunofluorescence analysis of STAT1 (pS727) was done on 70% confluent log phase HeLa cells. The cells were fixed with 4% paraformaldehyde for 15 minutes, permeabilized with 0.25% Triton™ X-100 for 10 minutes, and blocked with 5% BSA for 1 hour at room temperature. The cells were labeled with STAT1 (pS727) Rabbit polyclonal Antibody (Product # 44-382G) at 1:250 dilution in 1% BSA and incubated for 3 hours at room temperature and then labeled with Alexa Fluor 488 Goat Anti-Rabbit IgG Secondary Antibody (Product # A-11008) at a dilution of 1:400 for 30 minutes at room temperature (Panel a: green). Nuclei (Panel b: blue) were stained with SlowFade® Gold Antifade Mountant DAPI (Product # S36938). F-actin (Panel c: red) was stained with Alexa Fluor 594 Phalloidin (Product # A12381). Panel d is a merged image showing nuclear localization. Panel e shows no primary antibody control. The images were captured at 20X magnification.

**Phospho-STAT1 (Ser727) Antibody (44-382G) in IHC (P)**

Immunohistochemistry analysis of STAT1 (pS727) showing staining in the cytoplasm and nucleus of paraffin-embedded human cervical carcinoma (right) compared to a negative control without primary antibody (left). To expose target proteins, antigen retrieval was performed using 10mM sodium citrate (pH 6.0), microwaved for 8-15 min. Following antigen retrieval, tissues were blocked in 3% H2O2-methanol for 15 min at room temperature, washed with ddH2O and PBS, and then probed with a STAT1 (pS727) Rabbit Polyclonal Antibody (Product # 44-382G) diluted in 3% BSA-PBS at a dilution of 1:100 overnight at 4°C in a humidified chamber. Tissues were washed extensively in PBST and detection was performed using an HRP-conjugated secondary antibody followed by colorimetric detection using a DAB kit. Tissues were counterstained with hematoxylin and dehydrated with ethanol and xylene to prep for mounting.



View more figures on [thermofisher.com](https://thermofisher.com)

Western Blot (6)

JCI insight	Year 2018
<b>Ruxolitinib inhibits cyclosporine-induced proliferation of cutaneous squamous cell carcinoma.</b>	Species Human
"44-382G was used in Western Blotting to demonstrate that targeting the IL-22 axis via selective JAK/STAT inhibition may reduce the progression of aggressive quamous cell carcinoma in organ transplant recipients, without compromising immunosuppression."	
Authors: Abikhair Burgo M,Roudiani N,Chen J,Santana AL,Doudican N,Proby C,Felsen D,Carucci JA	
Nature	Year 2014
<b>RIPK1 ensures intestinal homeostasis by protecting the epithelium against apoptosis.</b>	Species Mouse
"44-382G was used in western blot to elucidate the role of RIPK1 using conditional knockout mice"	
Authors: Takahashi N,Vereecke L,Bertrand MJ,Duprez L,Berger SB,Divert T,Gonçalves A,Sze M,Gilbert B,Kourula S,Goossens V,Lefebvre S,Günther C,Becker C,Bertin J,Gough PJ,Declercq W,van Loo G,Vandenabeele P	

View more WB references on thermofisher.com

Immunocytochemistry (1)

Blood	Year 2011
<b>SUMO conjugation of STAT1 protects cells from hyperresponsiveness to IFN.</b>	Species Mouse
"44-382G was used in western blot to elucidate the physiologic implications of SUMO conjugation to STAT."	
Authors: Begitt A,Droescher M,Knobeloch KP,Vinkemeier U	

Immunoprecipitation (1)

The Journal of biological chemistry	Year 2002
<b>The serine protease plasmin triggers expression of MCP-1 and CD40 in human primary monocytes via activation of p38 MAPK and janus kinase (JAK)/STAT signaling pathways.</b>	Species Human
Authors: Burysek L,Syrovets T,Simmet T	

More applications with references on thermofisher.com

ChIP (1)

For Research Use Only. Not for use in diagnostic procedures. Not for resale without express authorization. Products are warranted to operate or perform substantially in conformance with published Product specifications in effect at the time of sale, as set forth in the Production documentation, specifications and/or accompanying package inserts ("Documentation"). No claim of suitability for use in applications regulated by FDA is made. The warranty provided herein is valid only when used by properly trained individuals. Unless otherwise stated in the Documentation, this warranty is limited to one year from date of shipment when the Product is subjected to normal, proper and intended usage. This warranty does not extend to anyone other than the Buyer. Any model or sample furnished to Buyer is merely illustrative of the general type and quality of goods and does not represent that any Product will conform to such model or sample. NO OTHER WARRANTIES, EXPRESS OR IMPLIED, ARE GRANTED INCLUDING WITHOUT LIMITATION, IMPLIED WARRANTIES OF MERCHANTABILITY, FITNESS FOR ANY PARTICULAR PURPOSE, OR NON INFRINGEMENT. BUYER'S EXCLUSIVE REMEDY FOR NON-CONFORMING PRODUCTS DURING THE WARRANTY PERIOD IS LIMITED TO REPAIR, REPLACEMENT OF OR REFUND FOR THE NON-CONFORMING PRODUCT(S) AT SELLER'S SOLE OPTION. THERE IS NO OBLIGATION TO REPAIR, REPLACE OR REFUND FOR PRODUCTS AS THE RESULT OF (I) ACCIDENT, DISASTER OR EVENT OF FORCE MAJEURE, (II) MISUSE, FAULT OR NEGLIGENCE OF OR BY BUYER, (III) USE OF THE PRODUCTS IN A MANNER FOR WHICH THEY WERE NOT DESIGNED, OR (IV) IMPROPER STORAGE AND HANDLING OF THE PRODUCTS. Unless otherwise expressly stated on the Product or in the documentation accompanying the Product, the Product is intended for research only and is not to be used for any other purpose, including without limitation, unauthorized commercial uses, in vitro diagnostic uses, ex vivo or in vivo therapeutic uses, or any type of consumption by or application to human or animals.