

# SIGLEC H Monoclonal Antibody (eBio440c), eFluor™ 660, eBioscience™

Product Details	
Size	100 µg
Species Reactivity	Mouse
Host/Isotype	Rat / IgG2b, kappa
Recommended Isotype Control	Rat IgG2b kappa Isotype Control (eB149/10H5), eFluor™ 660, eBioscience™
Class	Monoclonal
Type	Antibody
Clone	eBio440c
Conjugate	eFluor™ 660
Excitation/Emission Max	651/668 nm
Form	Liquid
Concentration	0.2 mg/mL
Purification	Affinity chromatography
Storage buffer	PBS, pH 7.2
Contains	0.09% sodium azide
Storage conditions	4° C, store in dark, DO NOT FREEZE!
RRID	AB_11150244

Applications	Tested Dilution	Publications
Flow Cytometry (Flow)	0.25 µg/test	3 Publications

## Product Specific Information

**Description:** The monoclonal antibody eBio440c recognizes Siglec-H, a protein exclusively found on pDC (plasmacytoid dendritic cells) or type I IFN-producing cells (IPC) in the naive mouse. Mouse IPC are typically PDCA+, CD11c+, CD11b-, B220+, and Ly-6C+, and are quick to respond to viruses. Siglec-H is a transmembrane protein of the Ig superfamily that like CD33 have been shown to bind sialic acid but lacks the characteristic cytoplasmic ITIM domain (immunoreceptor tyrosine based inhibitory motif). To overcome the lack of a cytoplasmic domain, Siglec-H associates with DAP12 thereby allowing for signal transduction.

The eBio440c antibody has been shown to inhibit pDC function (inhibits IFNalpha secretion in response to CpG).

It has been observed that some mouse strains (such as SJL) have higher percentages of pDCs compared to C57BL/6.

**Applications Reported:** This eBio440c antibody has been reported for use in flow cytometric analysis.

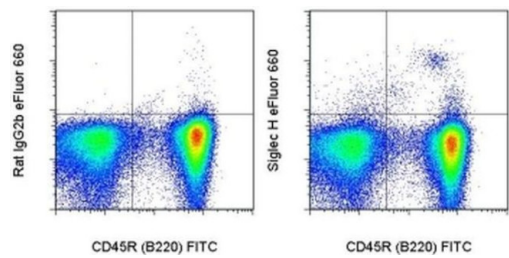
**Applications Tested:** This eBio440c antibody has been tested by flow cytometric analysis of mouse splenocytes. This can be used at less than or equal to 0.25 µg per test. A test is defined as the amount (µg) of antibody that will stain a cell sample in a final volume of 100 µL. Cell number should be determined empirically but can range from 10<sup>5</sup> to 10<sup>8</sup> cells/test. It is recommended that the antibody be carefully titrated for optimal performance in the assay of interest.

eFluor® 660 is a replacement for Alexa Fluor® 647. eFluor® 660 emits at 659 nm and is excited with the red laser (633 nm). Please make sure that your instrument is capable of detecting this fluorochrome.

Excitation: 633-647 nm; Emission: 668 nm; Laser: Red Laser.

Filtration: 0.2 µm post-manufacturing filtered.

Product Images For SIGLEC H Monoclonal Antibody (eBio440c), eFluor™ 660, eBioscience™



**SIGLEC H Antibody (50-0333-82) in Flow**  
Staining of SJL splenocytes with Anti-Human/Mouse CD45R (B220) FITC (Product # 11-0452-82) and 0.125 µg of Rat IgG2b Isotype Control eFluor® 660 (Product # 50-4031-82) (left) or 0.125 µg of Anti-Mouse Siglec H eFluor® 660 (right). Cells in the lymphocyte gate were used for analysis.

3 References

Flow Cytometry (3)

eLife	Year 2023
<b>A lncRNA identifies <i>Irf8</i> enhancer element in negative feedback control of dendritic cell differentiation.</b>	
"Published figure using SIGLEC H monoclonal antibody (Product # 50-0333-82) in Flow Cytometry"	
Authors: Xu H,Li Z,Kuo CC,Götz K,Look T,de Toledo MAS,Seré K,Costa IG,Zenke M	
Cell reports	Year 2020
<b>Characterization of Resident Corneal Plasmacytoid Dendritic Cells and Their Pivotal Role in Herpes Simplex Keratitis.</b>	
"Published figure using SIGLEC H monoclonal antibody (Product # 50-0333-82) in Flow Cytometry"	
Authors: Jamali A,Hu K,Sendra VG,Blanco T,Lopez MJ,Ortiz G,Qazi Y,Zheng L,Turhan A,Harris DL,Hamrah P	

[View more Flow references on thermofisher.com](#)

For Research Use Only. Not for use in diagnostic procedures. Not for resale without express authorization. Products are warranted to operate or perform substantially in conformance with published Product specifications in effect at the time of sale, as set forth in the Production documentation, specifications and/or accompanying package inserts ("Documentation"). No claim of suitability for use in applications regulated by FDA is made. The warranty provided herein is valid only when used by properly trained individuals. Unless otherwise stated in the Documentation, this warranty is limited to one year from date of shipment when the Product is subjected to normal, proper and intended usage. This warranty does not extend to anyone other than the Buyer. Any model or sample furnished to Buyer is merely illustrative of the general type and quality of goods and does not represent that any Product will conform to such model or sample. NO OTHER WARRANTIES, EXPRESS OR IMPLIED, ARE GRANTED INCLUDING WITHOUT LIMITATION, IMPLIED WARRANTIES OF MERCHANTABILITY, FITNESS FOR ANY PARTICULAR PURPOSE, OR NON INFRINGEMENT. BUYER'S EXCLUSIVE REMEDY FOR NON-CONFORMING PRODUCTS DURING THE WARRANTY PERIOD IS LIMITED TO REPAIR, REPLACEMENT OF OR REFUND FOR THE NON-CONFORMING PRODUCT(S) AT SELLER'S SOLE OPTION. THERE IS NO OBLIGATION TO REPAIR, REPLACE OR REFUND FOR PRODUCTS AS THE RESULT OF (I) ACCIDENT, DISASTER OR EVENT OF FORCE MAJEURE, (II) MISUSE, FAULT OR NEGLIGENCE OF OR BY BUYER, (III) USE OF THE PRODUCTS IN A MANNER FOR WHICH THEY WERE NOT DESIGNED, OR (IV) IMPROPER STORAGE AND HANDLING OF THE PRODUCTS. Unless otherwise expressly stated on the Product or in the documentation accompanying the Product, the Product is intended for research only and is not to be used for any other purpose, including without limitation, unauthorized commercial uses, in vitro diagnostic uses, ex vivo or in vivo therapeutic uses, or any type of consumption by or application to human or animals.