

IL-15 Polyclonal Antibody, PeproTech®

Product Details

Size	1 mg
Species Reactivity	Human
Published Species	Human
Host/Isotype	Rabbit
Class	Polyclonal
Type	Antibody
Conjugate	Unconjugated
Immunogen	E.coli-derived Recombinant Human IL-15
Form	Lyophilized
Concentration	0.1-1.0 mg/mL
Purification	Antigen affinity chromatography
Storage buffer	PBS
Contains	no preservative
Storage conditions	-20°C

Applications	Tested Dilution	Publications
Western Blot (WB)	0.1-0.2 µg/mL	1 Publication
Flow Cytometry (Flow)	-	1 Publication
ELISA (ELISA)	0.5-2.0 µg/mL	-
In vitro Assay (IV)	-	1 Publication
Immunostaining (IS)	-	2 Publications

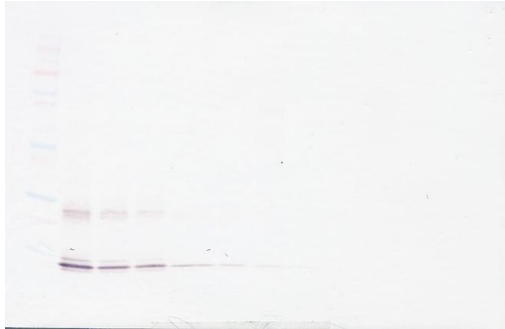
Product Specific Information

AA Sequence of recombinant protein: MNWVNVISDL KKIEDLIQSM HIDATLYTES DVHPSCKVTA MKCFLLELQV ISLESGDASI HDTVENLIIL ANNSLSSNGN VTESGCKECE ELEEKNIKEF LQSFVHIVQM FINTS.

Preparation: Produced from sera of rabbits immunized with highly pure Recombinant Human IL-15. Anti-Human IL-15-specific antibody was purified by affinity chromatography employing an immobilized Human IL-15 matrix.

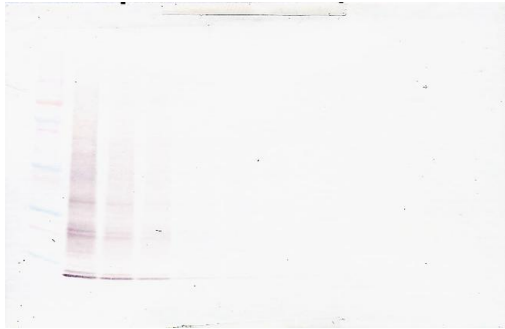
Sandwich ELISA: To detect Human IL-15 by sandwich ELISA (using 100 µL/well antibody solution) a concentration of 0.5-2.0 µg/mL of this antibody is required. This antigen affinity purified antibody, in conjunction with PeproTech Biotinylated Anti-Human IL-15 (500-P15Bt) as a detection antibody, allows the detection of at least 0.2-0.4 ng/well of Recombinant Human IL-15.

Western Blot: To detect Human IL-15 by Western Blot analysis this antibody can be used at a concentration of 0.1-0.2 µg/mL. Used in conjunction with compatible secondary reagents the detection limit for Recombinant Human IL-15 is 1.5-3.0 ng/lane, under either reducing or non-reducing conditions.



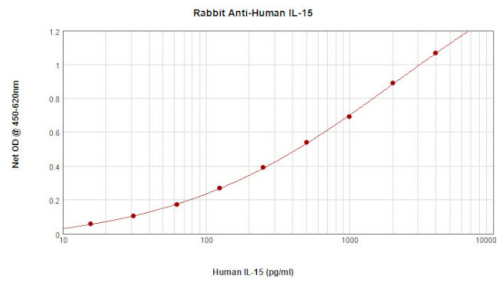
IL-15 Antibody (500-P15-1MG) in WB

Western Blot: To detect Human IL-15 by Western Blot analysis IL-15 Polyclonal Antibody (Product # 500-P15-1MG) can be used at a concentration of 0.1-0.2 µg /mL. Used in conjunction with compatible secondary reagents the detection limit for Recombinant Human IL-15 is 1.5-3.0 ng/lane, under either reducing or non-reducing conditions.



IL-15 Antibody (500-P15-1MG) in WB

Western Blot: To detect Human IL-15 by Western Blot analysis IL-15 Polyclonal Antibody (Product # 500-P15-1MG) can be used at a concentration of 0.1-0.2 µg /mL. Used in conjunction with compatible secondary reagents the detection limit for Recombinant Human IL-15 is 1.5-3.0 ng/lane, under either reducing or non-reducing conditions.



IL-15 Antibody (500-P15-1MG) in ELISA

Sandwich ELISA: To detect Human IL-15 by sandwich ELISA (using 100 µL/well antibody solution) a concentration of 0.5-2.0 µg/mL of IL-15 Polyclonal Antibody (Product # 500-P15-1MG) is required. This antigen affinity purified antibody, in conjunction with PeproTech IL-15 Polyclonal Antibody, Biotin (Product # 500-P15BT-1MG) as a detection antibody, allows the detection of at least 0.2-0.4 ng /well of Recombinant Human IL-15.

Western Blot (1)

Journal of immunology (Baltimore, Md. : 1950)	Year 1998
Targeting the IL-15 receptor with an antagonist IL-15 mutant/Fc gamma2a protein blocks delayed-type hypersensitivity.	
Authors: Kim YS,Maslinski W,Zheng XX,Stevens AC,Li XC,Tesch GH,Kelley VR,Strom TB	

Flow Cytometry (1)

Blood	Year 2006
CCL18/PARC stimulates hematopoiesis in long-term bone marrow cultures indirectly through its effect on monocytes.	Species Human
Authors: Wimmer A,Khaldoyanidi SK,Judex M,Seroby N,Discipio RG,Schraufstatter IU	

In vitro Assay (1)

Blood	Year 1998
Interleukin-15 is an autocrine/paracrine viability factor for cutaneous T-cell lymphoma cells.	Species Human
Authors: Döbbeling U,Dummer R,Laine E,Potoczna N,Qin JZ,Burg G	

Immunostaining (2)

Blood	Year 2001
Interleukin-7 and interleukin-15 regulate the expression of the bcl-2 and c-myb genes in cutaneous T-cell lymphoma cells.	Species Human
Authors: Qin JZ,Zhang CL,Kamarashev J,Dummer R,Burg G,Döbbeling U	

More applications with references on thermofisher.com

For Research Use Only. Not for use in diagnostic procedures. Not for resale without express authorization. Products are warranted to operate or perform substantially in conformance with published Product specifications in effect at the time of sale, as set forth in the Production documentation, specifications and/or accompanying package inserts ("Documentation"). No claim of suitability for use in applications regulated by FDA is made. The warranty provided herein is valid only when used by properly trained individuals. Unless otherwise stated in the Documentation, this warranty is limited to one year from date of shipment when the Product is subjected to normal, proper and intended usage. This warranty does not extend to anyone other than the Buyer. Any model or sample furnished to Buyer is merely illustrative of the general type and quality of goods and does not represent that any Product will conform to such model or sample. NO OTHER WARRANTIES, EXPRESS OR IMPLIED, ARE GRANTED INCLUDING WITHOUT LIMITATION, IMPLIED WARRANTIES OF MERCHANTABILITY, FITNESS FOR ANY PARTICULAR PURPOSE, OR NON INFRINGEMENT. BUYER'S EXCLUSIVE REMEDY FOR NON-CONFORMING PRODUCTS DURING THE WARRANTY PERIOD IS LIMITED TO REPAIR, REPLACEMENT OF OR REFUND FOR THE NON-CONFORMING PRODUCT(S) AT SELLER'S SOLE OPTION. THERE IS NO OBLIGATION TO REPAIR, REPLACE OR REFUND FOR PRODUCTS AS THE RESULT OF (I) ACCIDENT, DISASTER OR EVENT OF FORCE MAJEURE, (II) MISUSE, FAULT OR NEGLIGENCE OF OR BY BUYER, (III) USE OF THE PRODUCTS IN A MANNER FOR WHICH THEY WERE NOT DESIGNED, OR (IV) IMPROPER STORAGE AND HANDLING OF THE PRODUCTS. Unless otherwise expressly stated on the Product or in the documentation accompanying the Product, the Product is intended for research only and is not to be used for any other purpose, including without limitation, unauthorized commercial uses, in vitro diagnostic uses, ex vivo or in vivo therapeutic uses, or any type of consumption by or application to human or animals.