

CLEC11A Polyclonal Antibody, Biotin, PeproTech®

Product Details

Size	2 x 500 µg
Species Reactivity	Human
Host/Isotype	Rabbit
Class	Polyclonal
Type	Antibody
Conjugate	Biotin
Immunogen	E.coli-derived, 33.9 kDa Recombinant Human SCGF-alpha
Form	Lyophilized
Concentration	0.1-1.0 mg/mL
Purification	Antigen affinity chromatography
Storage buffer	PBS
Contains	no preservative
Storage conditions	-20°C

Applications	Tested Dilution	Publications
Western Blot (WB)	0.1-0.2 µg/mL	-
ELISA (ELISA)	0.25-1.0 µg/mL	-

Product Specific Information

AA Sequence of recombinant protein: GHGARGAER EWEGGWGGAQ EEEREREALM LKHLQEALGL PAGRGDENPA GTVEGKEDWE MEEDQGEEEE EEATPTPSSG PSPSPTPEDI VTYILGRLAG LDAGLHQLHV RLHALDTRVV ELTQGLRQLR NAAGDTRDAV QALQEAQGRA EREHGRLEGC LKGLRLGHKC FLLSRDFEAQ AAAQARCTAR GGSLAQPADR QQMEALTRYL RAALAPYNWP VWLGVDHRRR EGLYLFENGQ RVSFFAWHRS PRPELGAQPS ASPHPLSPDQ PNGGTLENCV AQASDDGSWW DHDCQRRLLY VCEFPF.

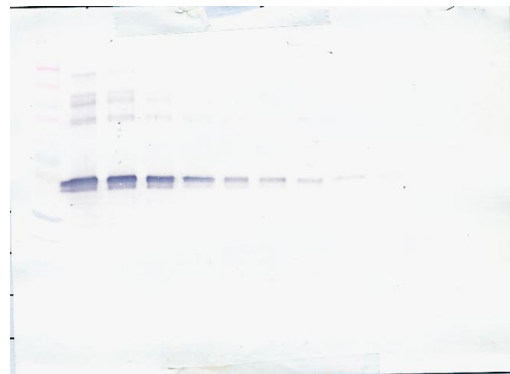
Preparation: Produced from sera of rabbits immunized with highly pure Recombinant Human SCGF-alpha. Anti-Human SCGF-alpha-specific antibody was purified by affinity chromatography and then biotinylated.

Sandwich ELISA: To detect Human SCGF-alpha by sandwich ELISA (using 100 µL/well) a concentration of 0.25-1.0 µg/mL of this antibody is required. This biotinylated polyclonal antibody, in conjunction with PeproTech Polyclonal Anti-Human SCGF-alpha (500-P162) as a capture antibody, allows the detection of at least 2000-4000 pg/mL of Recombinant Human SCGF-alpha.

Western Blot: To detect Human SCGF-alpha by Western Blot analysis this antibody can be used at a concentration of 0.1-0.2 µg/mL. When used in conjunction with compatible development reagents the detection limit for Recombinant Human SCGF-alpha is 1.5-3.0 ng/lane, under either reducing or non-reducing conditions.

500-P162BT-1 mg will be provided as 2 x 500 µg

Product Images For CLEC11A Polyclonal Antibody, Biotin, PeproTech®



CLEC11A Antibody (500-P162BT-1MG) in WB

Western Blot: To detect Human SCGF-alpha by Western Blot analysis CLEC11A Polyclonal Antibody, Biotin (Product # 500-P162BT-1MG) can be used at a concentration of 0.1-0.2 µg/mL. When used in conjunction with compatible development reagents the detection limit for Recombinant Human SCGF-alpha is 1.5-3.0 ng/lane, under either reducing or non-reducing conditions.

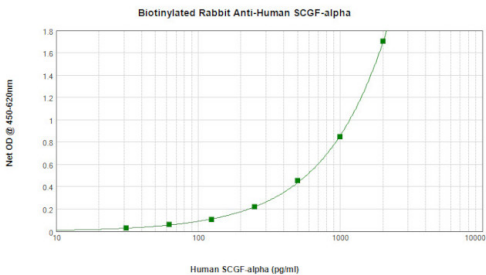


CLEC11A Antibody (500-P162BT-1MG) in WB

Western Blot: To detect Human SCGF-alpha by Western Blot analysis CLEC11A Polyclonal Antibody, Biotin (Product # 500-P162BT-1MG) can be used at a concentration of 0.1-0.2 µg/mL. When used in conjunction with compatible development reagents the detection limit for Recombinant Human SCGF-alpha is 1.5-3.0 ng/lane, under either reducing or non-reducing conditions.

CLEC11A Antibody (500-P162BT-1MG) in ELISA

Sandwich ELISA: To detect Human SCGF-alpha by sandwich ELISA (using 100 µl/well) a concentration of 0.25-1.0 µg/mL of CLEC11A Polyclonal Antibody, Biotin (Product # 500-P162BT-1MG) is required. This biotinylated polyclonal antibody, in conjunction with PeproTech CLEC11A Polyclonal Antibody (Product # 500-P162-1MG) as a capture antibody, allows the detection of at least 2000-4000 pg/mL of Recombinant Human SCGF-alpha.



For Research Use Only. Not for use in diagnostic procedures. Not for resale without express authorization. Products are warranted to operate or perform substantially in conformance with published Product specifications in effect at the time of sale, as set forth in the Production documentation, specifications and/or accompanying package inserts ("Documentation"). No claim of suitability for use in applications regulated by FDA is made. The warranty provided herein is valid only when used by properly trained individuals. Unless otherwise stated in the Documentation, this warranty is limited to one year from date of shipment when the Product is subjected to normal, proper and intended usage. This warranty does not extend to anyone other than the Buyer. Any model or sample furnished to Buyer is merely illustrative of the general type and quality of goods and does not represent that any Product will conform to such model or sample. NO OTHER WARRANTIES, EXPRESS OR IMPLIED, ARE GRANTED INCLUDING WITHOUT LIMITATION, IMPLIED WARRANTIES OF MERCHANTABILITY, FITNESS FOR ANY PARTICULAR PURPOSE, OR NON-INFRINGEMENT. BUYER'S EXCLUSIVE REMEDY FOR NON-CONFORMING PRODUCTS DURING THE WARRANTY PERIOD IS LIMITED TO REPAIR, REPLACEMENT OF OR REFUND FOR THE NON-CONFORMING PRODUCT(S) AT SELLER'S SOLE OPTION. THERE IS NO OBLIGATION TO REPAIR, REPLACE OR REFUND FOR PRODUCTS AS THE RESULT OF (I) ACCIDENT, DISASTER OR EVENT OF FORCE MAJEURE, (II) MISUSE, FAULT OR NEGLIGENCE OF OR BY BUYER, (III) USE OF THE PRODUCTS IN A MANNER FOR WHICH THEY WERE NOT DESIGNED, OR (IV) IMPROPER STORAGE AND HANDLING OF THE PRODUCTS. Unless otherwise expressly stated on the Product or in the documentation accompanying the Product, the Product is intended for research only and is not to be used for any other purpose, including without limitation, unauthorized commercial uses, in vitro diagnostic uses, ex vivo or in vivo therapeutic uses, or any type of consumption by or application to human or animals.