

# IFN gamma Polyclonal Antibody, PeproTech®

## Product Details

Size	1 mg
Species Reactivity	Human
Published Species	Protozoa, Bacteria, Hamster, Human
Host/Isotype	Rabbit
Class	Polyclonal
Type	Antibody
Conjugate	Unconjugated
Immunogen	E.coli-derived Recombinant Human IFN-gamma
Form	Lyophilized
Concentration	0.1-1.0 mg/mL
Purification	Antigen affinity chromatography
Storage buffer	PBS
Contains	no preservative
Storage conditions	-20°C

Applications	Tested Dilution	Publications
Western Blot (WB)	0.1-0.2 µg/mL	-
Immunohistochemistry (IHC)	-	3 Publications
Immunocytochemistry (ICC/IF)	-	1 Publication
Flow Cytometry (Flow)	-	1 Publication
ELISA (ELISA)	0.5-2.0 µg/mL	1 Publication
Neutralization (Neu)	-	3 Publications
In vitro Assay (IV)	-	5 Publications
Immunostaining (IS)	-	1 Publication

## Product Specific Information

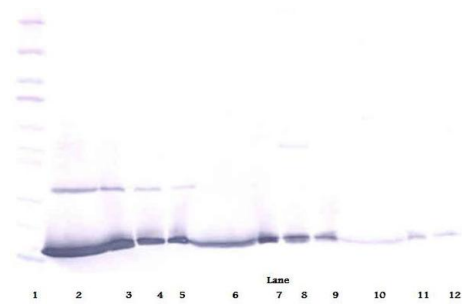
AA Sequence of recombinant protein: MQDPYVKEAE NLKKYFNAGH SDVADNGTLF LGILKNWKEE SDRKIMQSQI VSFYFKLFKN FKDDQSIQKS VETIKEDMNV KFFNSNKKKR DDFEKLTNYS VTDLNVQRKA IHELIQVMAE LSPA AKTGKR KRSQMLFQGR RASQ.

Preparation: Produced from sera of rabbits immunized with highly pure Recombinant Human IFN-gamma. Anti-Human IFN-gamma-specific antibody was purified by affinity chromatography employing an immobilized Human IFN-gamma matrix.

Sandwich ELISA: To detect Human IFN-gamma by sandwich ELISA (using 100 µL/well antibody solution) a concentration of 0.5-2.0 µg/mL of this antibody is required. This antigen affinity purified antibody, in conjunction with PeproTech Biotinylated Anti-Human IFN-gamma (500-P32Bt) as a detection antibody, allows the detection of at least 0.2-0.4 ng/well of Recombinant Human IFN-gamma.

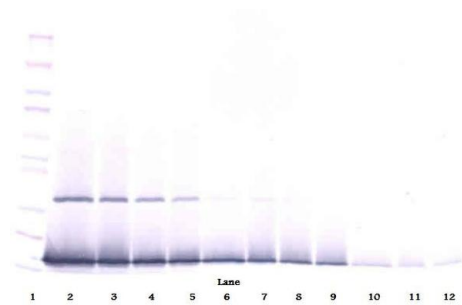
Western Blot: To detect Human IFN-gamma by Western Blot analysis this antibody can be used at a concentration of 0.1- 0.2 µg/mL. When used in conjunction with compatible secondary reagents, the detection limit for Recombinant Human IFN-gamma is 1.5-3.0 ng/lane, under either reducing or non-reducing conditions.

Product Images For IFN gamma Polyclonal Antibody, PeproTech®



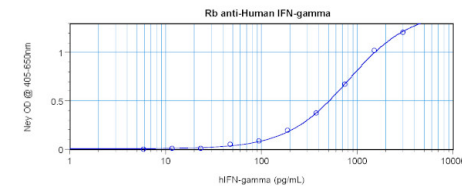
IFN gamma Antibody (500-P32-1MG) in WB

Western Blot: To detect Human IFN-gamma by Western Blot analysis IFN gamma Polyclonal Antibody (Product # 500-P32-1MG) can be used at a concentration of 0.1- 0.2 µg/mL. When used in conjunction with compatible secondary reagents, the detection limit for Recombinant Human IFN-gamma is 1.5-3.0 ng/lane, under either reducing or non-reducing conditions.



IFN gamma Antibody (500-P32-1MG) in WB

Western Blot: To detect Human IFN-gamma by Western Blot analysis IFN gamma Polyclonal Antibody (Product # 500-P32-1MG) can be used at a concentration of 0.1- 0.2 µg/mL. When used in conjunction with compatible secondary reagents, the detection limit for Recombinant Human IFN-gamma is 1.5-3.0 ng/lane, under either reducing or non-reducing conditions.



IFN gamma Antibody (500-P32-1MG) in ELISA

Sandwich ELISA: To detect Human IFN-gamma by sandwich ELISA (using 100 µL/well antibody solution) a concentration of 0.5-2.0 µg/mL of IFN gamma Polyclonal Antibody (Product # 500-P32-1MG) is required. This antigen affinity purified antibody, in conjunction with PeproTech IFN gamma Polyclonal Antibody, Biotin (Product # 500-P32BT-1MG) as a detection antibody, allows the detection of at least 0.2-0.4 ng/well of Recombinant Human IFN-gamma.

15 References

Immunohistochemistry (3)

<p>Journal of immunology research</p> <p><b>Evaluation of the PEIII-LC3-KDEL3 Chimeric Protein of <i>Entamoeba histolytica</i>-Lectin as a Vaccine Candidate against Amebic Liver Abscess.</b></p> <p>"500-P32 was used in Immunohistochemistry to study the effect of immunization with PEIII-LC3-KDEL3 recombinant protein for the prevention of invasive amebiasis, avoided an acute proinflammatory response, and activated a protective response within a short time."</p> <p>Authors: Martínez-Hernández SL,Becerra-González VM,Muñoz-Ortega MH,Loera-Muro VM,Ávila-Blanco ME,Medina-Rosales MN,Ventura-Juárez J</p>	<p>Year 2021</p> <p>Species Hamster</p>
--	---

PloS one

Myeloid dendritic cells stimulated by thymic stromal lymphopoietin promote Th2 immune responses and the pathogenesis of oral lichen planus.

"500-P32 was used in Immunohistochemistry to suggest that CD11c+ mDCs expressing TSLPR contribute to aberrant Th2 immune responses and the pathogenesis of OLP via TSLP stimulation."

Authors: Yamauchi M,Moriyama M,Hayashida JN,Maehara T,Ishiguro N,Kubota K,Furukawa S,Ohta M,Sakamoto M,Tanaka A,Nakamura S

Year

2017

Species

Human

[View more IHC references on thermofisher.com](#)

Immunocytochemistry (1)

Infection and immunity

Functional Characterization of an Interferon Gamma Receptor-Like Protein on Entamoeba histolytica.

"500-P32 was used in Immunocytochemistry-immunofluorescence to demonstrate that E. histolytica expresses a surface interferon gamma receptor-like protein that is functional and may play a role in disease pathogenesis and/or immune evasion."

Authors: Pulido-Ortega J,Talamás-Rohana P,Muñoz-Ortega MH,Aldaba-Muruato LR,Martínez-Hernández SL,Campos-Esparza MDR,Cervantes-García D,Leon-Coria A,Moreau F,Chadee K,Ventura-Juárez J

Year

2019

Species

Protozoa

Flow Cytometry (1)

Cancer research

Immunization with Epstein-Barr Virus (EBV) peptide-pulsed dendritic cells induces functional CD8+ T-cell immunity and may lead to tumor regression in patients with EBV-positive nasopharyngeal carcinoma.

Authors: Lin CL,Lo WF,Lee TH,Ren Y,Hwang SL,Cheng YF,Chen CL,Chang YS,Lee SP,Rickinson AB,Tam PK

Year

2002

Species

Human

More applications with references on thermofisher.com

- ELISA (1)
- Neu (3)
- IV (5)
- IS (1)

For Research Use Only. Not for use in diagnostic procedures. Not for resale without express authorization. Products are warranted to operate or perform substantially in conformance with published Product specifications in effect at the time of sale, as set forth in the Production documentation, specifications and/or accompanying package inserts ("Documentation"). No claim of suitability for use in applications regulated by FDA is made. The warranty provided herein is valid only when used by properly trained individuals. Unless otherwise stated in the Documentation, this warranty is limited to one year from date of shipment when the Product is subjected to normal, proper and intended usage. This warranty does not extend to anyone other than the Buyer. Any model or sample furnished to Buyer is merely illustrative of the general type and quality of goods and does not represent that any Product will conform to such model or sample. NO OTHER WARRANTIES, EXPRESS OR IMPLIED, ARE GRANTED INCLUDING WITHOUT LIMITATION, IMPLIED WARRANTIES OF MERCHANTABILITY, FITNESS FOR ANY PARTICULAR PURPOSE, OR NON INFRINGEMENT. BUYER'S EXCLUSIVE REMEDY FOR NON-CONFORMING PRODUCTS DURING THE WARRANTY PERIOD IS LIMITED TO REPAIR, REPLACEMENT OF OR REFUND FOR THE NON-CONFORMING PRODUCT(S) AT SELLER'S SOLE OPTION. THERE IS NO OBLIGATION TO REPAIR, REPLACE OR REFUND FOR PRODUCTS AS THE RESULT OF (i) ACCIDENT, DISASTER OR EVENT OF FORCE MAJEURE, (ii) MISUSE, FAULT OR NEGLIGENCE OF OR BY BUYER, (iii) USE OF THE PRODUCTS IN A MANNER FOR WHICH THEY WERE NOT DESIGNED, OR (iv) IMPROPER STORAGE AND HANDLING OF THE PRODUCTS. Unless otherwise expressly stated on the Product or in the documentation accompanying the Product, the Product is intended for research only and is not to be used for any other purpose, including without limitation, unauthorized commercial uses, in vitro diagnostic uses, ex vivo or in vivo therapeutic uses, or any type of consumption by or application to human or animals.