

# CXCL1 Polyclonal Antibody, PeproTech®

## Product Details

Size	1 mg
Species Reactivity	Rat
Published Species	Rat
Host/Isotype	Rabbit
Class	Polyclonal
Type	Antibody
Conjugate	Unconjugated
Immunogen	E.coli-derived Recombinant Rat GRO/KC (CXCL1)
Form	Lyophilized
Concentration	0.1-1.0 mg/mL
Purification	Antigen affinity chromatography
Storage buffer	PBS
Contains	no preservative
Storage conditions	-20°C

Applications	Tested Dilution	Publications
Western Blot (WB)	0.1-0.2 µg/mL	-
ELISA (ELISA)	0.5-2.0 µg/mL	2 Publications
Miscellaneous PubMed (Misc)	-	2 Publications
Immunostaining (IS)	-	1 Publication

## Product Specific Information

AA Sequence of recombinant protein: APVANELRCQ CLQTVAGIHF KNIQSLKVMP PGPHTQTEV IATLKNGREA CLDPEAPMVQ KIVQKMLKGV PK.

Preparation: Produced from sera of rabbits immunized with highly pure Recombinant Rat GRO/KC (CXCL1). Anti-Rat GRO/KC (CXCL1)-specific antibody was purified by affinity chromatography employing an immobilized Rat GRO/KC (CXCL1) matrix.

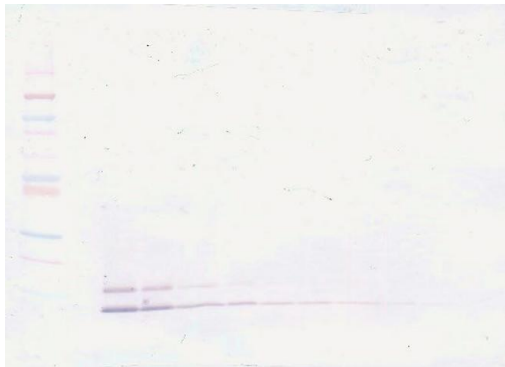
Sandwich ELISA: To detect Rat GRO/KC (CXCL1) by sandwich ELISA (using 100 µL/well antibody solution) a concentration of 0.5-2.0 µg/mL of this antibody is required. This antigen affinity purified antibody, in conjunction with PeproTech Biotinylated Anti-Rat GRO/KC (CXCL1) (500-P74Bt) as a detection antibody, allows the detection of at least 0.2-0.4 ng/well of Recombinant Rat GRO/KC (CXCL1).

Western Blot: To detect Rat GRO/KC by Western Blot analysis this antibody can be used at a concentration of 0.1-0.2 µg/mL. When used in conjunction with compatible secondary reagents, the detection limit for Recombinant Rat GRO/KC is 1.5-3.0 ng /lane, under either reducing or non-reducing conditions.



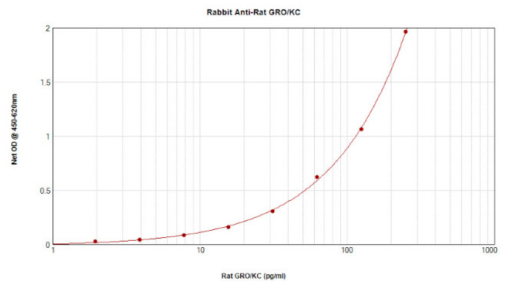
**CXCL1 Antibody (500-P74-1MG) in WB**

Western Blot: To detect Rat GRO/KC by Western Blot analysis CXCL1 Polyclonal Antibody (Product # 500-P74-1MG) can be used at a concentration of 0.1-0.2 µg/mL. When used in conjunction with compatible secondary reagents, the detection limit for Recombinant Rat GRO/KC is 1.5-3.0 ng/lane, under either reducing or non-reducing conditions.



**CXCL1 Antibody (500-P74-1MG) in WB**

Western Blot: To detect Rat GRO/KC by Western Blot analysis CXCL1 Polyclonal Antibody (Product # 500-P74-1MG) can be used at a concentration of 0.1-0.2 µg/mL. When used in conjunction with compatible secondary reagents, the detection limit for Recombinant Rat GRO/KC is 1.5-3.0 ng/lane, under either reducing or non-reducing conditions.



**CXCL1 Antibody (500-P74-1MG) in ELISA**

Sandwich ELISA: To detect Rat GRO/KC (CXCL1) by sandwich ELISA (using 100 µL/well antibody solution) a concentration of 0.5-2.0 µg/mL of CXCL1 Polyclonal Antibody (Product # 500-P74-1MG) is required. This antigen affinity purified antibody, in conjunction with PeproTech CXCL1 Polyclonal Antibody, Biotin (Product # 500-P74BT-1MG) as a detection antibody, allows the detection of at least 0.2-0.4 ng/well of Recombinant Rat GRO/KC (CXCL1).

ELISA (2)

<p>Journal of immunology (Baltimore, Md. : 1950)</p> <p><b>Menopause and ovariectomy cause a low grade of systemic inflammation that may be prevented by chronic treatment with low doses of estrogen or losartan.</b></p> <p>Authors: Abu-Taha M,Rius C,Hermenegildo C,Noguera I,Cerda-Nicolas JM,Issekutz AC,Jose PJ,Cortijo J,Morcillo EJ,Sanz MJ</p>	<p>Year 2009</p> <p>Species Rat</p>
<p>Circulation</p> <p><b>Angiotensin II induces neutrophil accumulation in vivo through generation and release of CXC chemokines.</b></p> <p>Authors: Nabah YN,Mateo T,Estellés R,Mata M,Zagorski J,Sarau H,Cortijo J,Morcillo EJ,Jose PJ,Sanz MJ</p>	<p>Year 2004</p> <p>Species Rat</p>

Miscellaneous PubMed (2)

<p>Circulation</p> <p><b>Angiotensin II induces neutrophil accumulation in vivo through generation and release of CXC chemokines.</b></p> <p>Authors: Nabah YN,Mateo T,Estellés R,Mata M,Zagorski J,Sarau H,Cortijo J,Morcillo EJ,Jose PJ,Sanz MJ</p>	<p>Year 2004</p> <p>Species Rat</p>
<p>Circulation</p> <p><b>Ischemia-reperfusion of rat myocardium activates nuclear factor-KappaB and induces neutrophil infiltration via lipopolysaccharide-induced CXC chemokine.</b></p> <p>Authors: Chandrasekar B,Smith JB,Freeman GL</p>	<p>Year 2001</p> <p>Species Rat</p>

More applications with references on thermofisher.com

IS (1)

For Research Use Only. Not for use in diagnostic procedures. Not for resale without express authorization. Products are warranted to operate or perform substantially in conformance with published Product specifications in effect at the time of sale, as set forth in the Production documentation, specifications and/or accompanying package inserts ("Documentation"). No claim of suitability for use in applications regulated by FDA is made. The warranty provided herein is valid only when used by properly trained individuals. Unless otherwise stated in the Documentation, this warranty is limited to one year from date of shipment when the Product is subjected to normal, proper and intended usage. This warranty does not extend to anyone other than the Buyer. Any model or sample furnished to Buyer is merely illustrative of the general type and quality of goods and does not represent that any Product will conform to such model or sample. NO OTHER WARRANTIES, EXPRESS OR IMPLIED, ARE GRANTED INCLUDING WITHOUT LIMITATION, IMPLIED WARRANTIES OF MERCHANTABILITY, FITNESS FOR ANY PARTICULAR PURPOSE, OR NON INFRINGEMENT. BUYER'S EXCLUSIVE REMEDY FOR NON-CONFORMING PRODUCTS DURING THE WARRANTY PERIOD IS LIMITED TO REPAIR, REPLACEMENT OF OR REFUND FOR THE NON-CONFORMING PRODUCT(S) AT SELLER'S SOLE OPTION. THERE IS NO OBLIGATION TO REPAIR, REPLACE OR REFUND FOR PRODUCTS AS THE RESULT OF (I) ACCIDENT, DISASTER OR EVENT OF FORCE MAJEURE, (II) MISUSE, FAULT OR NEGLIGENCE OF OR BY BUYER, (III) USE OF THE PRODUCTS IN A MANNER FOR WHICH THEY WERE NOT DESIGNED, OR (IV) IMPROPER STORAGE AND HANDLING OF THE PRODUCTS. Unless otherwise expressly stated on the Product or in the documentation accompanying the Product, the Product is intended for research only and is not to be used for any other purpose, including without limitation, unauthorized commercial uses, in vitro diagnostic uses, ex vivo or in vivo therapeutic uses, or any type of consumption by or application to human or animals.