

H2BK5ac Recombinant Polyclonal Antibody (24HCLC)

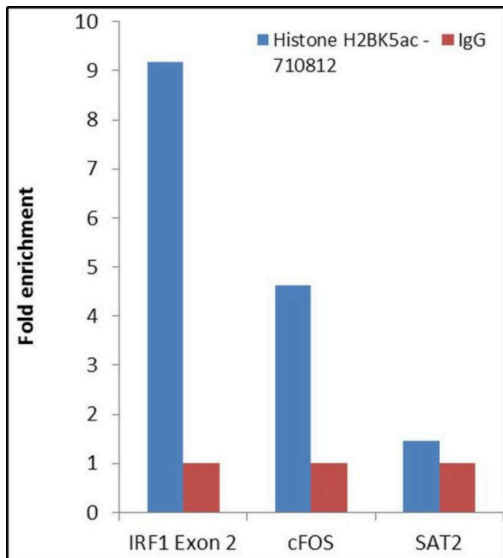
Product Details	
Size	100 µg
Species Reactivity	Human
Host/Isotype	Rabbit / IgG
Expression system	Expi293
Class	Recombinant Polyclonal
Type	Antibody
Clone	24HCLC
Conjugate	Unconjugated
Immunogen	Acetylated peptide (Lys5) corresponding to Human H2 (aa 2-9)
Form	Liquid
Concentration	0.5 mg/mL
Purification	Protein A
Storage buffer	PBS, pH 7.2
Contains	0.09% sodium azide
Storage conditions	Store at 4°C short term. For long term storage, store at -20°C, avoiding freeze/thaw cycles.
RRID	AB_2532768

Applications	Tested Dilution	Publications
Western Blot (WB)	1:1500	-
Immunocytochemistry (ICC/IF)	0.5 µg/mL	-
ChIP assay (ChIP)	5 µg/mL	-
Peptide array (Array)	1-2 µg/mL	-

Product Specific Information

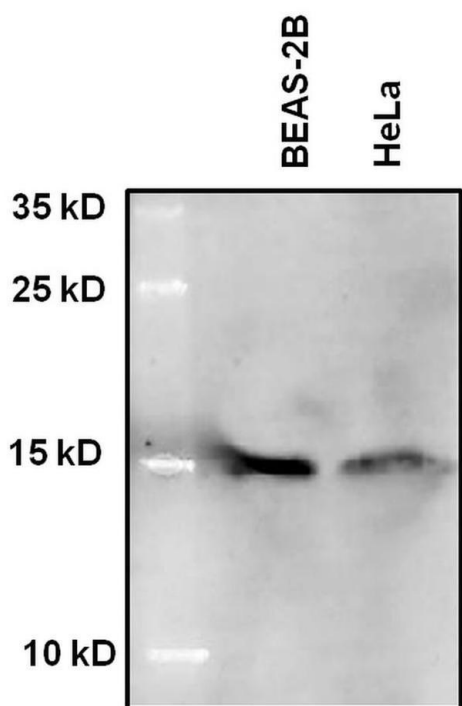
Recombinant rabbit polyclonal antibodies are unique offerings from Thermo Fisher Scientific. They are comprised of a selection of multiple different recombinant monoclonal antibodies, providing the best of both worlds - the sensitivity of polyclonal antibodies with the specificity of monoclonal antibodies - all delivered with the consistency only found in a recombinant antibody. While functionally the same as a polyclonal antibody - recognizing multiple epitope sites on the target and producing higher detection sensitivity for low abundance targets - a recombinant rabbit polyclonal antibody has a known mixture of light and heavy chains. The exact population can be produced in every lot, circumventing the biological variability typically associated with polyclonal antibody production.

Product Images For H2BK5ac Recombinant Polyclonal Antibody (24HCLC)



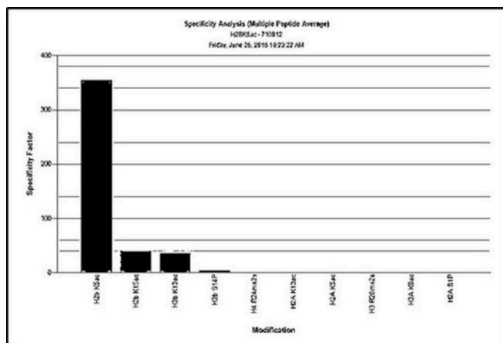
H2BK5ac Antibody (710812)

Antibody specificity was demonstrated by detection of enrichment of the target protein at specific gene loci. Chromatin Immunoprecipitation (ChIP) was performed using Histone H2BK5ac Antibody (24HCLC) Recombinant Rabbit Polyclonal (Product # 710812) with relevant positive (c-Fos, IRF1 Exon 2) and negative (SAT2 satellite repeat) target genes/ binding sites. {RE}



H2BK5ac Antibody (710812) in WB

Western blot analysis of Histone H2B Lysine 5 acetylation was performed by loading 40 µg of Nuclear protein extracts from BEAS-2B (lane 1) and HeLa (lane 2) in sample buffer and 5µL Spectra Multicolor Broad Range Protein Ladder (Product # 26634) onto a 15% polyacrylamide gel. Proteins were transferred to PVDF membrane (Product # 88518) at 65V for 90 min on ice. Membrane was blocked in 5% Milk in PBST for 1 hour at room temperature. Histone H2B Lysine 5 acetylation was detected at approximately 15 kDa using a Histone H2B Lysine 5 acetylation Recombinant Rabbit Polyclonal Antibody (Product # 710812) at a dilution of 1:1500 in 0.5% Milk in PBST overnight at 4°C. Followed by Goat anti-Rabbit alkaline phosphatase secondary antibody at a dilution of 1:20,000. Chemiluminescent detection was performed using ECF substrate. Data courtesy of Dr. Fondufe-Mittendorf's lab.



H2BK5ac Antibody (710812)

Antibody specificity for modified targets can be established using peptide arrays by quantifying detection of the target protein along with closely related proteins (belonging to same family). Peptide Array of Histone H2BK5ac using Histone H2BK5ac Antibody (24HCLC) Recombinant Rabbit Polyclonal (Product # 710812): An array of the specific peptide and other relevant peptides when tested using Histone H2BK5ac Antibody (24HCLC), Recombinant Rabbit Polyclonal Antibody (Product # 710812), showed that the H2BK5ac modification was specifically recognized by the antibody. {ARRAY}

View more figures on thermofisher.com

For Research Use Only. Not for use in diagnostic procedures. Not for resale without express authorization. Products are warranted to operate or perform substantially in conformance with published Product specifications in effect at the time of sale, as set forth in the Production documentation, specifications and/or accompanying package inserts ("Documentation"). No claim of suitability for use in applications regulated by FDA is made. The warranty provided herein is valid only when used by properly trained individuals. Unless otherwise stated in the Documentation, this warranty is limited to one year from date of shipment when the Product is subjected to normal, proper and intended usage. This warranty does not extend to anyone other than the Buyer. Any model or sample furnished to Buyer is merely illustrative of the general type and quality of goods and does not represent that any Product will conform to such model or sample. NO OTHER WARRANTIES, EXPRESS OR IMPLIED, ARE GRANTED INCLUDING WITHOUT LIMITATION, IMPLIED WARRANTIES OF MERCHANTABILITY, FITNESS FOR ANY PARTICULAR PURPOSE, OR NON INFRINGEMENT. BUYER'S EXCLUSIVE REMEDY FOR NON-CONFORMING PRODUCTS DURING THE WARRANTY PERIOD IS LIMITED TO REPAIR, REPLACEMENT OF OR REFUND FOR THE NON-CONFORMING PRODUCT(S) AT SELLER'S SOLE OPTION. THERE IS NO OBLIGATION TO REPAIR, REPLACE OR REFUND FOR PRODUCTS AS THE RESULT OF (I) ACCIDENT, DISASTER OR EVENT OF FORCE MAJEURE, (II) MISUSE, FAULT OR NEGLIGENCE OF OR BY BUYER, (III) USE OF THE PRODUCTS IN A MANNER FOR WHICH THEY WERE NOT DESIGNED, OR (IV) IMPROPER STORAGE AND HANDLING OF THE PRODUCTS. Unless otherwise expressly stated on the Product or in the documentation accompanying the Product, the Product is intended for research only and is not to be used for any other purpose, including without limitation, unauthorized commercial uses, in vitro diagnostic uses, ex vivo or in vivo therapeutic uses, or any type of consumption by or application to human or animals.