

# ITGB1 Monoclonal Antibody (MEM-101A), APC

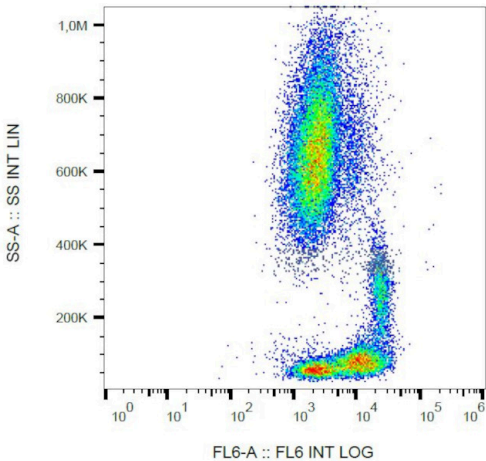
Product Details	
Size	100 Tests
Species Reactivity	Dog, Human, Pig
Published Species	Human
Host/Isotype	Mouse / IgG1
Class	Monoclonal
Type	Antibody
Clone	MEM-101A
Conjugate	APC
Excitation/Emission Max	651/660 nm
Immunogen	Burkitt's lymphoma cell line Raji.
Form	Liquid
Purification	Size-exclusion chromatography
Storage buffer	PBS, pH 7.4, with 0.2% BSA
Contains	15mM sodium azide
Storage conditions	4° C, store in dark, DO NOT FREEZE!
RRID	AB_1075422

Applications	Tested Dilution	Publications
Flow Cytometry (Flow)	10 µL x 100 µL whole blood or 10^6 cells	1 Publication

## Product Specific Information

This antibody will not cross-react with mouse.

## Product Images For ITGB1 Monoclonal Antibody (MEM-101A), APC



**ITGB1 Antibody (MA1-19458) in Flow**  
Flow cytometry analysis (surface staining) of human peripheral blood with anti-human CD29 (MEM-101A) APC Monoclonal antibody (Product # MA1-19458).

Flow Cytometry (1)

Xenotransplantation

Entry of human cytomegalovirus into porcine endothelial cells depends on both the cellular vascular origin and the viral strain.

"MA1-19458 was used in flow cytometry to study the effect of vascular origin and viral strain on the mechanisms used by human CMV to enter porcine endothelial cells"

Authors: Taveira A,Ponroy N,Mueller NJ,Millard AL

Year  
2015

Species  
Human

For Research Use Only. Not for use in diagnostic procedures. Not for resale without express authorization. Products are warranted to operate or perform substantially in conformance with published Product specifications in effect at the time of sale, as set forth in the Production documentation, specifications and/or accompanying package inserts ("Documentation"). No claim of suitability for use in applications regulated by FDA is made. The warranty provided herein is valid only when used by properly trained individuals. Unless otherwise stated in the Documentation, this warranty is limited to one year from date of shipment when the Product is subjected to normal, proper and intended usage. This warranty does not extend to anyone other than the Buyer. Any model or sample furnished to Buyer is merely illustrative of the general type and quality of goods and does not represent that any Product will conform to such model or sample. NO OTHER WARRANTIES, EXPRESS OR IMPLIED, ARE GRANTED INCLUDING WITHOUT LIMITATION, IMPLIED WARRANTIES OF MERCHANTABILITY, FITNESS FOR ANY PARTICULAR PURPOSE, OR NON INFRINGEMENT. BUYER'S EXCLUSIVE REMEDY FOR NON-CONFORMING PRODUCTS DURING THE WARRANTY PERIOD IS LIMITED TO REPAIR, REPLACEMENT OF OR REFUND FOR THE NON-CONFORMING PRODUCT(S) AT SELLER'S SOLE OPTION. THERE IS NO OBLIGATION TO REPAIR, REPLACE OR REFUND FOR PRODUCTS AS THE RESULT OF (I) ACCIDENT, DISASTER OR EVENT OF FORCE MAJEURE, (II) MISUSE, FAULT OR NEGLIGENCE OF OR BY BUYER, (III) USE OF THE PRODUCTS IN A MANNER FOR WHICH THEY WERE NOT DESIGNED, OR (IV) IMPROPER STORAGE AND HANDLING OF THE PRODUCTS. Unless otherwise expressly stated on the Product or in the documentation accompanying the Product, the Product is intended for research only and is not to be used for any other purpose, including without limitation, unauthorized commercial uses, in vitro diagnostic uses, ex vivo or in vivo therapeutic uses, or any type of consumption by or application to human or animals.