

Ly-6A/E Monoclonal Antibody (D7)

Product Details

Size	200 µg
Species Reactivity	Mouse
Published Species	Bovine, Mouse
Host/Isotype	Rat / IgG2a
Class	Monoclonal
Type	Antibody
Clone	D7
Conjugate	Unconjugated
Immunogen	IL-2-dependent mouse T-cell line CTL-L.
Form	Liquid
Concentration	0.5 mg/mL
Purification	Protein G
Storage buffer	PBS
Contains	0.09% sodium azide
Storage conditions	Store at 4°C short term. For long term storage, store at -20°C, avoiding freeze/thaw cycles.
RRID	AB_1077516

Applications	Tested Dilution	Publications
Western Blot (WB)	Assay-dependent	2 Publications
Immunocytochemistry (ICC/IF)	5 µg/mL	-
Flow Cytometry (Flow)	1 µg/1 million cells	14 Publications
Immunoprecipitation (IP)	Assay-dependent	-

Product Specific Information

MA1-70082 detects Ly 6A/E in mouse samples.

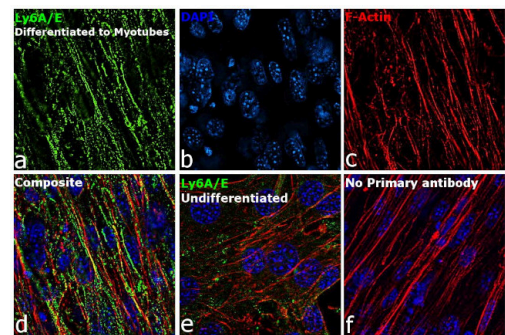
MA1-70082 has been successfully used in Western blot, flow cytometry and immunoprecipitation procedures.

The MA1-70082 immunogen is IL-2-dependent mouse T-cell line CTL-L.

Product Images For Ly-6A/E Monoclonal Antibody (D7)

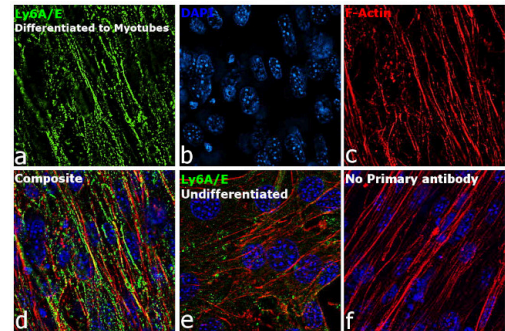
Ly-6A/E Antibody (MA1-70082) in ICC/IF

Immunofluorescence analysis of Lymphocyte antigen 6A-2/6E-1 was performed using 70% confluent log phase C2C12 cells differentiated to myotubes. The cells were fixed with 4% paraformaldehyde for 10 minutes, permeabilized with 0.1% Triton™ X-100 for 15 minutes, and blocked with 2% BSA for 45 minutes at room temperature. The cells were labeled with Ly-6A/E Monoclonal Antibody (D7) (Product # MA1-70082) at 5 ug/ml in 0.1% BSA, incubated at 4 degree celsius overnight and then labeled with Goat anti-Rat IgG (H+L) Cross-Adsorbed Secondary Antibody, Alexa Fluor 488 (Product # A11006), (1:1500), for 45 minutes at room temperature (Panel a: Green). Nuclei (Panel b: Blue) were stained with ProLong™ Diamond Antifade Mountant with DAPI (Product # P36962). F-actin (Panel c: Red) was stained with Rhodamine Phalloidin (Product # R415, 1:300). Panel d represents the merged image showing membraneous localization. Panel e represents undifferentiated cells having low signal . Panel f represents control cells with no primary antibody to assess background. The images were captured at 60X magnification.



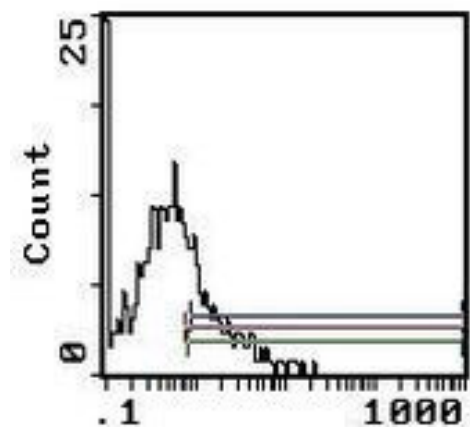
Ly-6A/E Antibody (MA1-70082)

Antibody specificity was demonstrated by detection of differential basal expression of the target across cell models owing to their inherent genetic constitution. Immunofluorescence analysis using Anti-Ly-6A/E Monoclonal Antibody (D7) (Product # MA1-70082), shows increased expression of Sca1 only in C2C12 differentiated to myotube cells as compared to undifferentiated cells. {RE}



Ly-6A/E Antibody (MA1-70082) in Flow

Flow cytometric analysis of bone marrow staining using a Ly 6A/E monoclonal antibody (Product # MA1-70082) at a 0.5 µg/10^6 cells dilution. The isotypic control was a biotin rat IgG2a



Western Blot (2)

<p>The Journal of biological chemistry</p> <p>Dependence of RGS9-1 membrane attachment on its C-terminal tail.</p> <p>"MA1-70082 was used in western blot to investigate membrane attachment of RGS9-1"</p> <p>Authors: He W,Melia TJ,Cowan CW,Wensel TG</p>	<p>Year</p> <p>2001</p> <p>Species</p> <p>Bovine</p> <p>Dilution</p> <p>1:250</p>
<p>Immunogenetics</p> <p>Ly-6A.2 and Ly-6E.1 molecules are antithetical and identical to MALA-1.</p> <p>"MA1-70082 was used in western blot to discuss detection of Ly-6 locus-controlled antigen"</p> <p>Authors: Palfree RG,Dumont FJ,Hammerling U</p>	<p>Year</p> <p>1986</p>

Flow Cytometry (14)

<p>The EMBO journal</p> <p>Osteopontin attenuates aging-associated phenotypes of hematopoietic stem cells.</p> <p>"MA170082 was used in flow cytometry to examine the contribution of stroma-derived osteopontin for hematopoietic stem cell aging"</p> <p>Authors: Guidi N,Sacma M,Ständker L,Soller K,Marka G,Eiwen K,Weiss JM,Kirchhoff F,Weil T,Cancelas JA,Florian MC,Geiger H</p>	<p>Year</p> <p>2017</p> <p>Species</p> <p>Mouse</p>
<p>Haematologica</p> <p>A population of hematopoietic stem cells derives from GATA4-expressing progenitors located in the placenta and lateral mesoderm of mice.</p> <p>"MA170082 was used in flow cytometry to utilize a G2-Gata4Cre;R26REYFP mouse line to track the developmental fate of the G2-Gata4 cell lineage"</p> <p>Authors: Cañete A,Carmona R,Ariza L,Sánchez MJ,Rojas A,Muñoz-Chápuli R</p>	<p>Year</p> <p>2017</p> <p>Species</p> <p>Mouse</p>

View more Flow references on thermofisher.com

More applications with references on thermofisher.com

For Research Use Only. Not for use in diagnostic procedures. Not for resale without express authorization. Products are warranted to operate or perform substantially in conformance with published Product specifications in effect at the time of sale, as set forth in the Production documentation, specifications and/or accompanying package inserts ("Documentation"). No claim of suitability for use in applications regulated by FDA is made. The warranty provided herein is valid only when used by properly trained individuals. Unless otherwise stated in the Documentation, this warranty is limited to one year from date of shipment when the Product is subjected to normal, proper and intended usage. This warranty does not extend to anyone other than the Buyer. Any model or sample furnished to Buyer is merely illustrative of the general type and quality of goods and does not represent that any Product will conform to such model or sample. NO OTHER WARRANTIES, EXPRESS OR IMPLIED, ARE GRANTED INCLUDING WITHOUT LIMITATION, IMPLIED WARRANTIES OF MERCHANTABILITY, FITNESS FOR ANY PARTICULAR PURPOSE, OR NON INFRINGEMENT. BUYER'S EXCLUSIVE REMEDY FOR NON-CONFORMING PRODUCTS DURING THE WARRANTY PERIOD IS LIMITED TO REPAIR, REPLACEMENT OF OR REFUND FOR THE NON-CONFORMING PRODUCT(S) AT SELLER'S SOLE OPTION. THERE IS NO OBLIGATION TO REPAIR, REPLACE OR REFUND FOR PRODUCTS AS THE RESULT OF (i) ACCIDENT, DISASTER OR EVENT OF FORCE MAJEURE, (ii) MISUSE, FAULT OR NEGLIGENCE OF OR BY BUYER, (iii) USE OF THE PRODUCTS IN A MANNER FOR WHICH THEY WERE NOT DESIGNED, OR (iv) IMPROPER STORAGE AND HANDLING OF THE PRODUCTS. Unless otherwise expressly stated on the Product or in the documentation accompanying the Product, the Product is intended for research only and is not to be used for any other purpose, including without limitation, unauthorized commercial uses, in vitro diagnostic uses, ex vivo or in vivo therapeutic uses, or any type of consumption by or application to human or animals.