

HLA-ABC Monoclonal Antibody (YTH862.2)

Product Details

Size	200 µg
Species Reactivity	Human
Published Species	Mouse
Host/Isotype	Rat / IgG2b
Class	Monoclonal
Type	Antibody
Clone	YTH862.2
Conjugate	Unconjugated
Immunogen	PHA activated human peripheral blood lymphocytes.
Form	Liquid
Concentration	1 mg/mL
Purification	Protein G
Storage buffer	PBS, pH 7.4
Contains	0.09% sodium azide
Storage conditions	Store at 4°C short term. For long term storage, store at -20°C, avoiding freeze/thaw cycles.
RRID	AB_931638

Applications	Tested Dilution	Publications
Immunohistochemistry (Frozen) (IHC (F))	Assay-dependent	-
Immunocytochemistry (ICC/IF)	Assay-dependent	-
Flow Cytometry (Flow)	1:50-1:100	1 Publication
Immunoprecipitation (IP)	Assay-dependent	-
Functional Assay (FN)	Assay-dependent	-

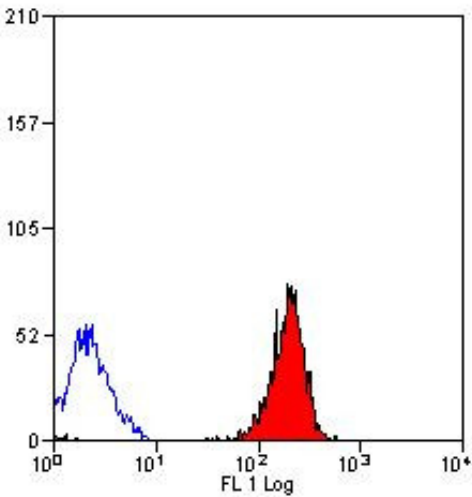
Product Specific Information

MA1-80014 recognizes a monomorphic determinant on the human HLA Class I heavy chain. Epitope analysis has shown that this antibody binds in the alpha1 domain. Recent studies have shown that this antibody may be able to induce apoptosis in activated but not resting T cells. This antibody does not react with mouse.

This product contains sodium azide; removal by dialysis is recommended prior to use in functional assays. Dialysis cassettes are suitable for this purpose.

For FACS analysis, use 10 µL of the suggested working dilution to label 1×10^6 cells in 100 µL.

Product Images For HLA-ABC Monoclonal Antibody (YTH862.2)



HLA-ABC Antibody (MA1-80014) in Flow
Flow cytometry of HLA-ABC in human peripheral blood lymphocytes. Samples were incubated in HLA-ABC Monoclonal antibody (Product # MA1-80014).

1 Reference

Flow Cytometry (1)

Breast cancer research : BCR	
Leptin produced by obesity-altered adipose stem cells promotes metastasis but not tumorigenesis of triple-negative breast cancer in orthotopic xenograft and patient-derived xenograft models.	
"MA1-80014 was used in Flow cytometry/Cell sorting to study the mechanisms by which obesity promotes tumour progression."	
Authors: Sabol RA,Bowles AC,Côté A,Wise R,O'Donnell B,Matossian MD,Hossain FM,Burks HE,Del Valle L,Miele L, Collins-Burow BM,Burow ME,Bunnell BA	
	<div>Year 2019</div> <div>Species Mouse</div>

For Research Use Only. Not for use in diagnostic procedures. Not for resale without express authorization. Products are warranted to operate or perform substantially in conformance with published Product specifications in effect at the time of sale, as set forth in the Production documentation, specifications and/or accompanying package inserts ("Documentation"). No claim of suitability for use in applications regulated by FDA is made. The warranty provided herein is valid only when used by properly trained individuals. Unless otherwise stated in the Documentation, this warranty is limited to one year from date of shipment when the Product is subjected to normal, proper and intended usage. This warranty does not extend to anyone other than the Buyer. Any model or sample furnished to Buyer is merely illustrative of the general type and quality of goods and does not represent that any Product will conform to such model or sample. NO OTHER WARRANTIES, EXPRESS OR IMPLIED, ARE GRANTED INCLUDING WITHOUT LIMITATION, IMPLIED WARRANTIES OF MERCHANTABILITY, FITNESS FOR ANY PARTICULAR PURPOSE, OR NON-INFRINGEMENT. BUYER'S EXCLUSIVE REMEDY FOR NON-CONFORMING PRODUCTS DURING THE WARRANTY PERIOD IS LIMITED TO REPAIR, REPLACEMENT OF OR REFUND FOR THE NON-CONFORMING PRODUCT(S) AT SELLER'S SOLE OPTION. THERE IS NO OBLIGATION TO REPAIR, REPLACE OR REFUND FOR PRODUCTS AS THE RESULT OF (i) ACCIDENT, DISASTER OR EVENT OF FORCE MAJEURE, (ii) MISUSE, FAULT OR NEGLIGENCE OF OR BY BUYER, (iii) USE OF THE PRODUCTS IN A MANNER FOR WHICH THEY WERE NOT DESIGNED, OR (iv) IMPROPER STORAGE AND HANDLING OF THE PRODUCTS. Unless otherwise expressly stated on the Product or in the documentation accompanying the Product, the Product is intended for research only and is not to be used for any other purpose, including without limitation, unauthorized commercial uses, in vitro diagnostic uses, ex vivo or in vivo therapeutic uses, or any type of consumption by or application to human or animals.