

# Cytochrome C Monoclonal Antibody (7H8.2C12)

Product Details	
Size	500 µL
Species Reactivity	Human, Mouse
Published Species	Rat, Fruit fly, Human, Mouse, Xenopus
Host/Isotype	Mouse / IgG2b, kappa
Class	Monoclonal
Type	Antibody
Clone	7H8.2C12
Conjugate	Unconjugated
Immunogen	Synthetic peptides corresponding to amino acids 1-80, 81-104 and 66-104 of pigeon cytochrome c
Form	Liquid
Concentration	0.2 mg/mL
Purification	Protein A/G
Storage buffer	PBS, pH 7.4, with 0.05% BSA
Contains	0.05% sodium azide
Storage conditions	4° C
RRID	AB_10985701

Applications	Tested Dilution	Publications
Western Blot (WB)	Assay-dependent	19 Publications
Immunohistochemistry (IHC)	-	7 Publications
Immunohistochemistry (Paraffin) (IHC (P))	1:100	4 Publications
Immunocytochemistry (ICC/IF)	2 µg/mL	4 Publications
Miscellaneous PubMed (Misc)	-	4 Publications

## Product Specific Information

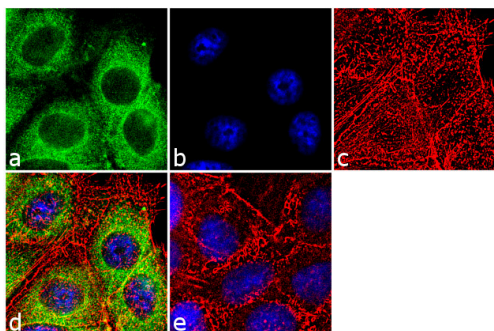
MA5-11674 targets Cytochrome c in IHC (P) and WB applications and shows reactivity with Human, mouse, and Rat samples.

The MA5-11674 immunogen is synthetic peptides corresponding to amino acids 1-80, 81-104 and 66-104 of pigeon cytochrome c.

## Product Images For Cytochrome C Monoclonal Antibody (7H8.2C12)

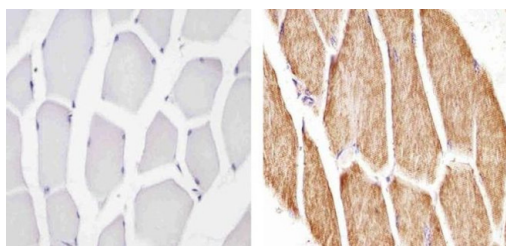
### Cytochrome C Antibody (MA5-11674) in ICC/IF

Immunofluorescence analysis of Cytochrome-C was done on 70% confluent log phase HepG2 cells. The cells were fixed with 4% paraformaldehyde for 10 minutes, permeabilized with 0.1% Triton™ X-100 for 10 minutes, and blocked with 1% BSA for 1 hour at room temperature. The cells were labeled with Cytochrome-C (7H8.2C12) Mouse Monoclonal Antibody (Product # MA5-11674) at 2 µg/mL in 0.1% BSA and incubated for 3 hours at room temperature and then labeled with Goat anti-Mouse IgG (H+L) Superclonal™ Secondary Antibody, Alexa Fluor® 488 conjugate (Product # A28175) at a dilution of 1:2000 for 45 minutes at room temperature (Panel a: green). Nuclei (Panel b: blue) were stained with SlowFade® Gold Antifade Mountant with DAPI (Product # S36938). F-actin (Panel c: red) was stained with Alexa Fluor® 555 Rhodamine Phalloidin (Product # R415, 1:300). Panel d is a merged image showing cytoplasmic localization. Panel e is a no primary antibody control. The images were captured at 60X magnification.



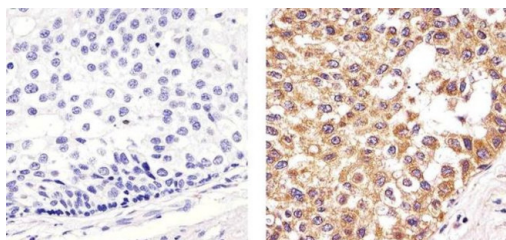
### Cytochrome C Antibody (MA5-11674) in IHC (P)

Immunohistochemistry analysis of Cytochrome c showing staining in the cytoplasm of paraffin-embedded mouse skeletal muscle tissue (right) compared to a negative control without primary antibody (left). To expose target proteins, antigen retrieval was performed using 10mM sodium citrate (pH 6.0), microwaved for 8-15 min. Following antigen retrieval, tissues were blocked in 3% H2O2-methanol for 15 min at room temperature, washed with ddH2O and PBS, and then probed with a Cytochrome c Mouse Monoclonal Antibody (Product # MA5-11674) diluted in 3% BSA-PBS at a dilution of 1:100 for 1 hour at 37°C in a humidified chamber. Tissues were washed extensively in PBST and detection was performed using an HRP-conjugated secondary antibody followed by colorimetric detection using a DAB kit. Tissues were counterstained with hematoxylin and dehydrated with ethanol and xylene to prep for mounting.



### Cytochrome C Antibody (MA5-11674) in IHC (P)

Immunohistochemistry analysis of Cytochrome c showing staining in the cytoplasm of paraffin-embedded human breast carcinoma (right) compared to a negative control without primary antibody (left). To expose target proteins, antigen retrieval was performed using 10mM sodium citrate (pH 6.0), microwaved for 8-15 min. Following antigen retrieval, tissues were blocked in 3% H2O2-methanol for 15 min at room temperature, washed with ddH2O and PBS, and then probed with a using Cytochrome c Mouse Monoclonal Antibody (Product # MA5-11674) diluted in 3% BSA-PBS at a dilution of 1:100 for 1 hour at 37°C in a humidified chamber. Tissues were washed extensively in PBST and detection was performed using an HRP-conjugated secondary antibody followed by colorimetric detection using a DAB kit. Tissues were counterstained with hematoxylin and dehydrated with ethanol and xylene to prep for mounting.



[View more figures on thermofisher.com](https://www.thermofisher.com)

## Western Blot (19)

### Scientific reports

#### Antibody-drug nanoparticle induces synergistic treatment efficacies in HER2 positive breast cancer cells.

"MA5-11674 was used in Western Blot to engineer antibody-drug nanoparticles by synthesizing pure anti-cancer drug nanorods in the core of nanoparticles with a therapeutic monoclonal antibody."

Authors: Abedin MR, Powers K, Aiardo R, Barua D, Barua S

Year  
2021

Species  
Human

Dilution  
1:400

### Cell death & disease

#### MicroRNA-26a/b have protective roles in oral lichen planus.

"Published figure using Cytochrome C monoclonal antibody (Product # MA5-11674) in Western Blot"

Authors: Du J, Gao R, Wang Y, Nguyen T, Yang F, Shi Y, Liu T, Liao W, Li R, Zhang F, Ge X, Zhao B

Year  
2020

[View more WB references on thermofisher.com](#)

## Immunohistochemistry (7)

### International journal of molecular sciences

#### Amelioration of Endotoxin-Induced Acute Lung Injury and Alveolar Epithelial Cells Apoptosis by Simvastatin Is Associated with Up-Regulation of Survivin/NF-kB/p65 Pathway.

"Published figure using Cytochrome C monoclonal antibody (Product # MA5-11674) in Immunohistochemistry"

Authors: Neži L, Amidži L, Škrbi R, Gajanin R, Mandi D, Dumanovi J, Milovanovi Z, Jaevi V

Year  
2022

### International journal of molecular sciences

#### Protective Effects of Simvastatin on Endotoxin-Induced Acute Kidney Injury through Activation of Tubular Epithelial Cells' Survival and Hindering Cytochrome C-Mediated Apoptosis.

"Published figure using Cytochrome C monoclonal antibody (Product # MA5-11674) in Immunohistochemistry"

Authors: Neži L, Škrbi R, Amidži L, Gajanin R, Milovanovi Z, Nepovimova E, Kua K, Jaevi V

Year  
2020

Species  
Rat

[View more IHC references on thermofisher.com](#)

## More applications with references on thermofisher.com

IHC (P) (4)

ICC/IF (4)

Misc (4)

For Research Use Only. Not for use in diagnostic procedures. Not for resale without express authorization. Products are warranted to operate or perform substantially in conformance with published Product specifications in effect at the time of sale, as set forth in the Production documentation, specifications and/or accompanying package inserts ("Documentation"). No claim of suitability for use in applications regulated by FDA is made. The warranty provided herein is valid only when used by properly trained individuals. Unless otherwise stated in the Documentation, this warranty is limited to one year from date of shipment when the Product is subjected to normal, proper and intended usage. This warranty does not extend to anyone other than the Buyer. Any model or sample furnished to Buyer is merely illustrative of the general type and quality of goods and does not represent that any Product will conform to such model or sample. NO OTHER WARRANTIES, EXPRESS OR IMPLIED, ARE GRANTED INCLUDING WITHOUT LIMITATION, IMPLIED WARRANTIES OF MERCHANTABILITY, FITNESS FOR ANY PARTICULAR PURPOSE, OR NON-INFRINGEMENT. BUYER'S EXCLUSIVE REMEDY FOR NON-CONFORMING PRODUCTS DURING THE WARRANTY PERIOD IS LIMITED TO REPAIR, REPLACEMENT OF OR REFUND FOR THE NON-CONFORMING PRODUCT(S) AT SELLER'S SOLE OPTION. THERE IS NO OBLIGATION TO REPAIR, REPLACE OR REFUND FOR PRODUCTS AS THE RESULT OF (I) ACCIDENT, DISASTER OR EVENT OF FORCE MAJEURE, (II) MISUSE, FAULT OR NEGLIGENCE OF OR BY BUYER, (III) USE OF THE PRODUCTS IN A MANNER FOR WHICH THEY WERE NOT DESIGNED, OR (IV) IMPROPER STORAGE AND HANDLING OF THE PRODUCTS. Unless otherwise expressly stated on the Product or in the documentation accompanying the Product, the Product is intended for research only and is not to be used for any other purpose, including without limitation, unauthorized commercial uses, in vitro diagnostic uses, ex vivo or in vivo therapeutic uses, or any type of consumption by or application to human or animals.