

Vimentin Monoclonal Antibody (V9), Biotin

Product Details

Size	500 µL
Species Reactivity	Bovine, Dog, Chicken, Horse, Cat, Gerbil, Hamster, Human, Mouse, Non-human primate, Pig, Rabbit, Rat
Published Species	Dog, Rabbit, Rat, Pig, Non-human primate, Bovine, Cat, Mouse, Human
Host/Isotype	Mouse / IgG1, kappa
Class	Monoclonal
Type	Antibody
Clone	V9
Conjugate	Biotin
Immunogen	Purified vimentin from pig eye lens
Form	Liquid
Concentration	0.2 mg/mL
Purification	Protein G
Storage buffer	PBS, pH 7.4, with 0.2% BSA
Contains	0.09% sodium azide
Storage conditions	4° C
RRID	AB_10979340

Applications	Tested Dilution	Publications
Western Blot (WB)	-	32 Publications
Immunohistochemistry (IHC)	-	106 Publications
Immunohistochemistry (Paraffin) (IHC (P))	1:50-1:100	-
Immunocytochemistry (ICC/IF)	-	28 Publications
Flow Cytometry (Flow)	-	2 Publications
Neutralization (Neu)	-	1 Publication
Miscellaneous PubMed (Misc)	-	2 Publications

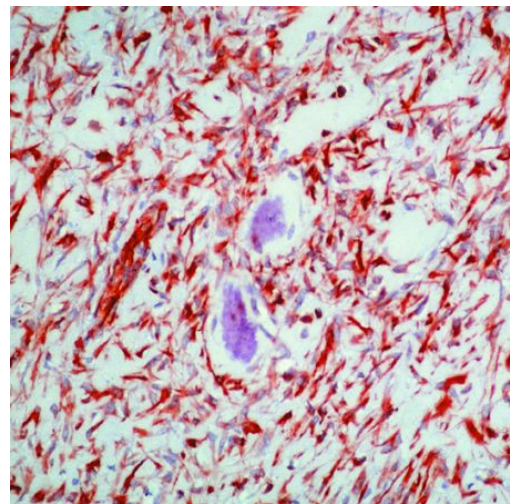
Product Specific Information

MA5-11880 targets Vimentin in immunohistochemistry (paraffin) applications and shows reactivity with Bovine, Canine, Chicken, Equine, Feline, Gerbil, Hamster, Human, mouse, Non-human primate, Porcine, Rabbit, and Rat samples.

The MA5-11880 immunogen is purified vimentin from pig eye lens.

Staining of formalin-fixed tissues requires boiling tissue sections in 10mM citrate buffer, pH6.0, for 10-20 minutes followed by cooling at RT for 20 min.

Product Images For Vimentin Monoclonal Antibody (V9), Biotin



Vimentin Antibody (MA5-11880) in IHC (P)
Formalin-fixed, paraffin-embedded human osteosarcoma stained with Vimentin antibody using peroxidase-conjugate and AEC chromogen. Note cytoplasmic staining of tumor cells.



Western Blot (32)

<p>Genes & development</p> <p>An evolutionarily conserved DNA architecture determines target specificity of the TWIST family bHLH transcription factors.</p> <p>"MA5-11880 was used in western blot to characterize evolutionarily conserved DNA architecture which determines target specificity of the TWIST family bHLH transcription factors"</p> <p>Authors: Chang AT,Liu Y,Ayyanathan K,Benner C,Jiang Y,Prokop JW,Paz H,Wang D,Li HR,Fu XD,Rauscher FJ,Yang J</p>	<p>Year</p> <p>2015</p>
<p>Cancer letters</p> <p>EGR1-dependent PTEN upregulation by 2-benzoyloxycinnamaldehyde attenuates cell invasion and EMT in colon cancer.</p> <p>"MA5-11880 was used in western blot to study the inhibition of colon cancer metastasis and epithelial-to-mesenchymal transition by 2-benzoyloxycinnamaldehyde and the role of PTEN upregulation mediated by EGR1"</p> <p>Authors: Kim J,Kang HS,Lee YJ,Lee HJ,Yun J,Shin JH,Lee CW,Kwon BM,Hong SH</p>	<p>Year</p> <p>2014</p> <p>Species</p> <p>Human</p>

View more WB references on thermofisher.com

Immunohistochemistry (106)

<p>Virchows Archiv : an international journal of pathology</p> <p>The leiomyomatous stroma in renal cell carcinomas is polyclonal and not part of the neoplastic process.</p> <p>"MA5-11880 was used in immunohistochemistry to study the non-neoplastic nature of renal cell carcinoma leiomyomatous stroma"</p> <p>Authors: Petersson F,Branzovsky J,Martinek P,Korabecna M,Kruslin B,Hora M,Peckova K,Bauleth K,Pivovarcikova K,Michal M,Svajdler M,Sperga M,Bulimbasic S,Leroy X,Rychly B,Trivunic S,Kokoskova B,Rotterova P,Podhola M,Suster S,Hes O</p>	<p>Year</p> <p>2014</p> <p>Species</p> <p>Human</p> <p>Dilution</p> <p>1:1000</p>
<p>Cell and tissue banking</p> <p>Amnion-derived mesenchymal stromal cells show a mesenchymal-epithelial phenotype in culture.</p> <p>"MA5-11880 was used in immunohistochemistry to study the mesenchymal-epithelial phenotype displayed by cultured mesenchymal stromal cells derived from the amniotic membrane"</p> <p>Authors: König J,Lang I,Siwetz M,Fröhlich J,Huppertz B</p>	<p>Year</p> <p>2014</p> <p>Species</p> <p>Human</p> <p>Dilution</p> <p>0.2 µg/mL</p>

View more IHC references on thermofisher.com

More applications with references on thermofisher.com

- ICC/IF (28)
- Flow (2)
- Neu (1)
- Misc (2)

For Research Use Only. Not for use in diagnostic procedures. Not for resale without express authorization. Products are warranted to operate or perform substantially in conformance with published Product specifications in effect at the time of sale, as set forth in the Production documentation, specifications and/or accompanying package inserts ("Documentation"). No claim of suitability for use in applications regulated by FDA is made. The warranty provided herein is valid only when used by properly trained individuals. Unless otherwise stated in the Documentation, this warranty is limited to one year from date of shipment when the Product is subjected to normal, proper and intended usage. This warranty does not extend to anyone other than the Buyer. Any model or sample furnished to Buyer is merely illustrative of the general type and quality of goods and does not represent that any Product will conform to such model or sample. NO OTHER WARRANTIES, EXPRESS OR IMPLIED, ARE GRANTED INCLUDING WITHOUT LIMITATION, IMPLIED WARRANTIES OF MERCHANTABILITY, FITNESS FOR ANY PARTICULAR PURPOSE, OR NON INFRINGEMENT. BUYER'S EXCLUSIVE REMEDY FOR NON-CONFORMING PRODUCTS DURING THE WARRANTY PERIOD IS LIMITED TO REPAIR, REPLACEMENT OF OR REFUND FOR THE NON-CONFORMING PRODUCT(S) AT SELLER'S SOLE OPTION. THERE IS NO OBLIGATION TO REPAIR, REPLACE OR REFUND FOR PRODUCTS AS THE RESULT OF (I) ACCIDENT, DISASTER OR EVENT OF FORCE MAJEURE, (II) MISUSE, FAULT OR NEGLIGENCE OF OR BY BUYER, (III) USE OF THE PRODUCTS IN A MANNER FOR WHICH THEY WERE NOT DESIGNED, OR (IV) IMPROPER STORAGE AND HANDLING OF THE PRODUCTS. Unless otherwise expressly stated on the Product or in the documentation accompanying the Product, the Product is intended for research only and is not to be used for any other purpose, including without limitation, unauthorized commercial uses, in vitro diagnostic uses, ex vivo or in vivo therapeutic uses, or any type of consumption by or application to human or animals.