

# Phospho-ATM (Ser1981) Monoclonal Antibody (C.70.6)

Product Details	
Size	100 µL
Species Reactivity	Human
Host/Isotype	Mouse / IgG1
Class	Monoclonal
Type	Antibody
Clone	C.70.6
Conjugate	Unconjugated
Immunogen	Synthetic phosphopeptide corresponding to residues around pSer1981 of human ATM
Form	Liquid
Concentration	2028 µg/mL
Purification	Affinity chromatography
Storage buffer	0.01M HEPES, pH 7.5, with 0.15M NaCl, 100µg/mL BSA, 50% glycerol
Contains	<0.02% sodium azide
Storage conditions	-20°C
RRID	AB_10979447

Applications	Tested Dilution	Publications
Western Blot (WB)	1:1,000	-
Immunocytochemistry (ICC/IF)	1:100	-
ChIP assay (ChIP)	3 µL/10 <sup>6</sup> cells	-

## Product Specific Information

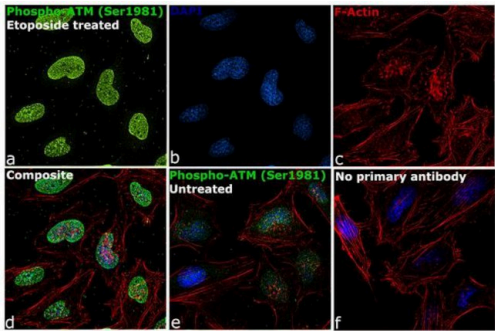
It is not recommended to aliquot this antibody.

This antibody was orginally validated as part of a Thermo Scientific Cellomics High Content Screening Kit. The antibody sold separately may have slightly different performance and may need to be further optimized for the best results.

Product Images For Phospho-ATM (Ser1981) Monoclonal Antibody (C.70.6)

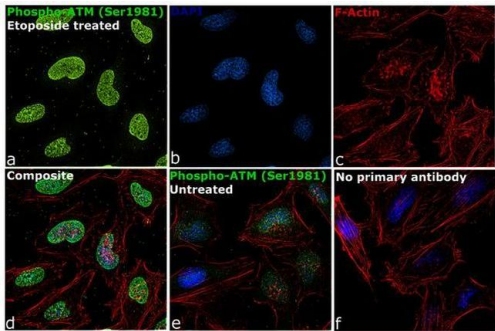
Phospho-ATM (Ser1981) Antibody (MA5-15185) in ICC/IF

Immunofluorescence analysis of Phospho-ATM (Ser1981) was performed using 70% confluent log phase HeLa cells treated with 10 uM Etoposide for 2 hours. The cells were fixed with 4% paraformaldehyde for 10 minutes, permeabilized with 0.1% Triton™ X-100 for 10 minutes, and blocked with 1% BSA for 1 hour at room temperature. The cells were labeled with Phospho-ATM (Ser1981) Monoclonal Antibody (C.70.6) (Product # MA5-15185) at 1:100 dilution in 0.1% BSA, incubated overnight at 4 degree Celsius and then labeled with Goat anti-Mouse IgG (H+L) Superclonal™ Secondary Antibody, Alexa Fluor® 488 conjugate (Product # A28175) at a dilution of 1:2000 for 45 minutes at room temperature (Panel a: green). Nuclei (Panel b: blue) were stained with ProLong™ Diamond Antifade Mountant with DAPI (Product # P36962). F-actin (Panel c: red) was stained with Rhodamine Phalloidin (Product # R415, 1:300). Panel d represents the merged image showing nuclear localization upon Etoposide treatment. Panel e shows untreated cells without any staining. Panel f represents control cells with no primary antibody to assess background. The images were captured at 60X magnification.



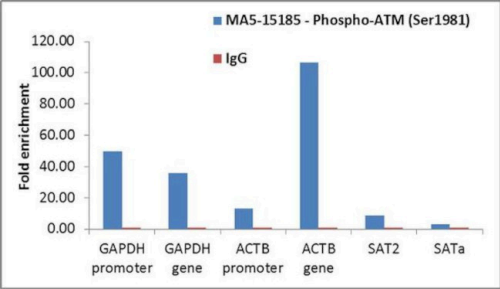
Phospho-ATM (Ser1981) Antibody (MA5-15185)

Altered expression of target protein upon cell treatment demonstrates antibody specificity. Immunofluorescence analysis of Phospho-ATM (Ser1981) using Anti-Phospho-ATM (Ser1981) Monoclonal Antibody (C.70.6) (Product # MA5-15185) shows increased expression of proteins in HeLa cell line upon Etoposide treatment. {TM}



Phospho-ATM (Ser1981) Antibody (MA5-15185)

Antibody specificity was demonstrated by detection of enrichment of the target protein at specific gene loci. Chromatin Immunoprecipitation (ChIP) was performed using Anti-Phospho-ATM (Ser1981) Mouse Monoclonal Antibody (Product # MA5-15185) using PCR primer pairs over GAPDH and ACTB promoters and genes (active) and SAT2 satellite repeats, SAT alpha (inactive). {RE}



View more figures on [thermofisher.com](https://thermofisher.com)

For Research Use Only. Not for use in diagnostic procedures. Not for resale without express authorization. Products are warranted to operate or perform substantially in conformance with published Product specifications in effect at the time of sale, as set forth in the Production documentation, specifications and/or accompanying package inserts ("Documentation"). No claim of suitability for use in applications regulated by FDA is made. The warranty provided herein is valid only when used by properly trained individuals. Unless otherwise stated in the Documentation, this warranty is limited to one year from date of shipment when the Product is subjected to normal, proper and intended usage. This warranty does not extend to anyone other than the Buyer. Any model or sample furnished to Buyer is merely illustrative of the general type and quality of goods and does not represent that any Product will conform to such model or sample. NO OTHER WARRANTIES, EXPRESS OR IMPLIED, ARE GRANTED INCLUDING WITHOUT LIMITATION, IMPLIED WARRANTIES OF MERCHANTABILITY, FITNESS FOR ANY PARTICULAR PURPOSE, OR NON-INFRINGEMENT. BUYER'S EXCLUSIVE REMEDY FOR NON-CONFORMING PRODUCTS DURING THE WARRANTY PERIOD IS LIMITED TO REPAIR, REPLACEMENT OF OR REFUND FOR THE NON-CONFORMING PRODUCT(S) AT SELLER'S SOLE OPTION. THERE IS NO OBLIGATION TO REPAIR, REPLACE OR REFUND FOR PRODUCTS AS THE RESULT OF (I) ACCIDENT, DISASTER OR EVENT OF FORCE MAJEURE, (II) MISUSE, FAULT OR NEGLIGENCE OF OR BY BUYER, (III) USE OF THE PRODUCTS IN A MANNER FOR WHICH THEY WERE NOT DESIGNED, OR (IV) IMPROPER STORAGE AND HANDLING OF THE PRODUCTS. Unless otherwise expressly stated on the Product or in the documentation accompanying the Product, the Product is intended for research only and is not to be used for any other purpose, including without limitation, unauthorized commercial uses, in vitro diagnostic uses, ex vivo or in vivo therapeutic uses, or any type of consumption by or application to human or animals.