

# beta Tubulin Loading Control Monoclonal Antibody (BT7R), HRP

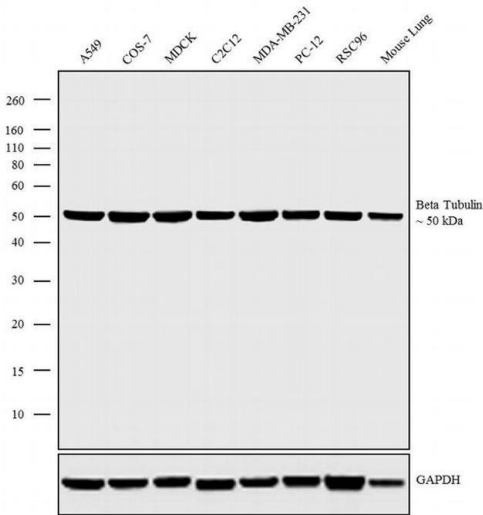
Product Details	
Size	50 µL
Species Reactivity	Dog, Chicken, Human, Mouse, Non-human primate, Rabbit, Rat
Published Species	Dog, C. elegans, Rat, Mouse, Human
Host/Isotype	Mouse / IgG2a
Class	Monoclonal
Type	Antibody
Clone	BT7R
Conjugate	HRP
Immunogen	KLH conjugated peptide of the N-terminus of Beta-Tubulin.
Form	Liquid
Concentration	1 mg/mL
Purification	Protein A
Contains	0.07% Kathon
Storage conditions	4° C
RRID	AB_2537827

Applications	Tested Dilution	Publications
Western Blot (WB)	1 µg/mL	7 Publications

## Product Specific Information

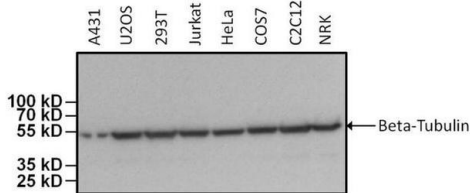
MA5-16308-HRP has been successfully used in Western blotting applications with human, mouse, rat, rabbit, non-human primate, and chicken samples.

Product Images For beta Tubulin Loading Control Monoclonal Antibody (BT7R), HRP



beta Tubulin Loading Control Antibody (MA5-16308-HRP) in WB

Western blot analysis was performed on whole cell extracts (30 µg lysate) of A549 (Lane 1), COS-7 (Lane 2), MDCK (Lane 3), C2C12 (Lane 4), MDA-MB-231 (Lane 5), PC-12 (Lane 6), RSC96 (Lane 7) and tissue extracts of Mouse Lung (Lane 8). The blot was probed with beta Tubulin Loading Control Monoclonal Antibody (BT7R), HRP (Product # MA5-16308-HRP, 1 µg/mL) and detected by chemiluminescence. A 50 kDa band corresponding to beta Tubulin was observed across the cell lines and tissues tested. Known quantity of protein samples were electrophoresed using Novex® NuPAGE® 10% Bis-Tris gel (Product # NP0322BOX), XCell SureLock™ Electrophoresis System (Product # EI0002) and Novex® Sharp Pre-Stained Protein Standard (Product # LC5800). Resolved proteins were then transferred onto a nitrocellulose membrane with iBlot® 2 Dry Blotting System (Product # IB21001). The membrane was probed with the relevant primary following blocking with 5 % skimmed milk. Chemiluminescent detection was performed using Pierce™ ECL Western Blotting Substrate (Product # 32106).



beta Tubulin Loading Control Antibody (MA5-16308-HRP) in WB

Western blot analysis of Beta-Tubulin was performed by loading 50 µg of various cell lysates per well onto a 4-20% Tris-HCl polyacrylamide gel. Proteins were transferred to a PVDF membrane and blocked with 5% BSA/TBST for at least 1 hour. The membrane was probed with an HRP-conjugated Beta-Tubulin monoclonal antibody (Product # MA5-16308-HRP) at a dilution of 1:1000 for 1 hour at room temperature on a rocking platform and washed in TBS-0.1% Tween-20. Chemiluminescent detection was performed using SuperSignal West Pico (Product # 34080).

[View more figures on thermofisher.com](https://www.thermofisher.com)

Western Blot (7)

Cells	
<b>Bivalent Inhibitor with Selectivity for Trimeric MMP-9 Amplifies Neutrophil Chemotaxis and Enables Functional Studies on MMP-9 Proteoforms.</b>	<b>Year</b> 2020
"MA5-16308-HRP was used in Western Blotting to evaluate the potential of a bivalent carboxylate inhibitor to selectively inhibit the trimeric proteoform of MMP-9 and compare this with a corresponding monovalent inhibitor."  Authors: Nuti E,Rossello A,Cuffaro D,Camodeca C, Van Bael J, van der Maat D,Martens E,Fiten P,Pereira RVS,Ugarte-Berzal E,Gouwy M,Opdenakker G,Vandooren J	<b>Species</b> Mouse
Genome biology	
<b>tappAS: a comprehensive computational framework for the analysis of the functional impact of differential splicing.</b>	<b>Year</b> 2020
"MA5-16308-HRP was used in Western Blotting to present a novel computational framework for the functional study of AltTEM, introducing the Functional Iso-Transcriptomics (FIT) analysis approach."  Authors: de la Fuente L,Arzalluz-Luque Á,Tardáguila M,Del Risco H,Martí C,Tarazona S,Salguero P,Scott R,Lerma A,Alastrue-Agudo A,Bonilla P,Newman JRB,Kosugi S,McIntyre LM,Moreno-Manzano V,Conesa A	<b>Species</b> Mouse

[View more WB references on thermofisher.com](#)

More applications with references on thermofisher.com

For Research Use Only. Not for use in diagnostic procedures. Not for resale without express authorization. Products are warranted to operate or perform substantially in conformance with published Product specifications in effect at the time of sale, as set forth in the Production documentation, specifications and/or accompanying package inserts ("Documentation"). No claim of suitability for use in applications regulated by FDA is made. The warranty provided herein is valid only when used by properly trained individuals. Unless otherwise stated in the Documentation, this warranty is limited to one year from date of shipment when the Product is subjected to normal, proper and intended usage. This warranty does not extend to anyone other than the Buyer. Any model or sample furnished to Buyer is merely illustrative of the general type and quality of goods and does not represent that any Product will conform to such model or sample. NO OTHER WARRANTIES, EXPRESS OR IMPLIED, ARE GRANTED INCLUDING WITHOUT LIMITATION, IMPLIED WARRANTIES OF MERCHANTABILITY, FITNESS FOR ANY PARTICULAR PURPOSE, OR NON INFRINGEMENT. BUYER'S EXCLUSIVE REMEDY FOR NON-CONFORMING PRODUCTS DURING THE WARRANTY PERIOD IS LIMITED TO REPAIR, REPLACEMENT OF OR REFUND FOR THE NON-CONFORMING PRODUCT(S) AT SELLER'S SOLE OPTION. THERE IS NO OBLIGATION TO REPAIR, REPLACE OR REFUND FOR PRODUCTS AS THE RESULT OF (I) ACCIDENT, DISASTER OR EVENT OF FORCE MAJEURE, (II) MISUSE, FAULT OR NEGLIGENCE OF OR BY BUYER, (III) USE OF THE PRODUCTS IN A MANNER FOR WHICH THEY WERE NOT DESIGNED, OR (IV) IMPROPER STORAGE AND HANDLING OF THE PRODUCTS. Unless otherwise expressly stated on the Product or in the documentation accompanying the Product, the Product is intended for research only and is not to be used for any other purpose, including without limitation, unauthorized commercial uses, in vitro diagnostic uses, ex vivo or in vivo therapeutic uses, or any type of consumption by or application to human or animals.