

Dectin 1 (soluble) Monoclonal Antibody (2A11), PE

Product Details	
Size	100 Tests
Species Reactivity	Mouse
Host/Isotype	Rat / IgG2b
Class	Monoclonal
Type	Antibody
Clone	2A11
Conjugate	PE
Excitation/Emission Max	565/576 nm
Immunogen	Dectin-1 transfected NIH3T3 cells and recombinant soluble Dectin-1
Form	Lyophilized
Concentration	Conc. Not Determined
Purification	Protein G
Storage buffer	PBS with 1% BSA, 5% sucrose
Contains	0.09% sodium azide
Storage conditions	4° C, store in dark, DO NOT FREEZE!
RRID	AB_2537995

Applications	Tested Dilution	Publications
Flow Cytometry (Flow)	Neat-1:10	-

Product Specific Information

Reconstitute with 1 mL of distilled water. After reconstitution, store product undiluted at 4°C in the dark. Once reconstituted, this product has a shelf life of approx. 18 months.

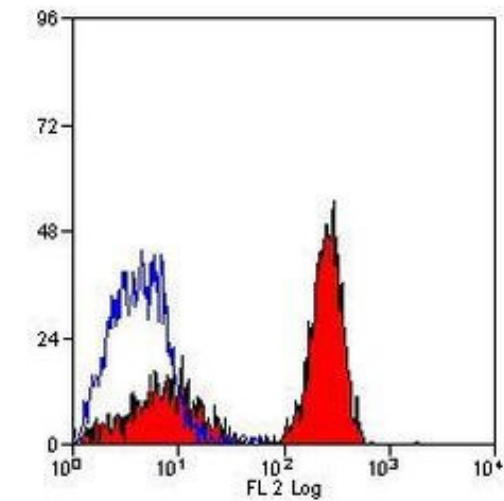
For FACS analysis, use 10 µL of the suggested working dilution to label 1x10^6 cells in 100 µL.

Rat anti Mouse Dectin-1 antibody, clone 2A11 recognizes murine beta-glucan receptor, also known as Dectin-1.

Rat anti Mouse Dectin-1 antibody, clone 2A11 recognizes murine beta-glucan receptor, also known as Dectin-1.

Product Images For Dectin 1 (soluble) Monoclonal Antibody (2A11), PE

Dectin 1 (soluble) Antibody (MA5-16482) in Flow
Flow cytometric analysis of mouse peripheral blood granulocytes with Rat anti Mouse Beta-glucan Receptor conjugated to RPE



For Research Use Only. Not for use in diagnostic procedures. Not for resale without express authorization. Products are warranted to operate or perform substantially in conformance with published Product specifications in effect at the time of sale, as set forth in the Production documentation, specifications and/or accompanying package inserts ("Documentation"). No claim of suitability for use in applications regulated by FDA is made. The warranty provided herein is valid only when used by properly trained individuals. Unless otherwise stated in the Documentation, this warranty is limited to one year from date of shipment when the Product is subjected to normal, proper and intended usage. This warranty does not extend to anyone other than the Buyer. Any model or sample furnished to Buyer is merely illustrative of the general type and quality of goods and does not represent that any Product will conform to such model or sample. NO OTHER WARRANTIES, EXPRESS OR IMPLIED, ARE GRANTED INCLUDING WITHOUT LIMITATION, IMPLIED WARRANTIES OF MERCHANTABILITY, FITNESS FOR ANY PARTICULAR PURPOSE, OR NON INFRINGEMENT. BUYER'S EXCLUSIVE REMEDY FOR NON-CONFORMING PRODUCTS DURING THE WARRANTY PERIOD IS LIMITED TO REPAIR, REPLACEMENT OF OR REFUND FOR THE NON-CONFORMING PRODUCT(S) AT SELLER'S SOLE OPTION. THERE IS NO OBLIGATION TO REPAIR, REPLACE OR REFUND FOR PRODUCTS AS THE RESULT OF (i) ACCIDENT, DISASTER OR EVENT OF FORCE MAJEURE, (ii) MISUSE, FAULT OR NEGLIGENCE OF OR BY BUYER, (iii) USE OF THE PRODUCTS IN A MANNER FOR WHICH THEY WERE NOT DESIGNED, OR (iv) IMPROPER STORAGE AND HANDLING OF THE PRODUCTS. Unless otherwise expressly stated on the Product or in the documentation accompanying the Product, the Product is intended for research only and is not to be used for any other purpose, including without limitation, unauthorized commercial uses, in vitro diagnostic uses, ex vivo or in vivo therapeutic uses, or any type of consumption by or application to human or animals.