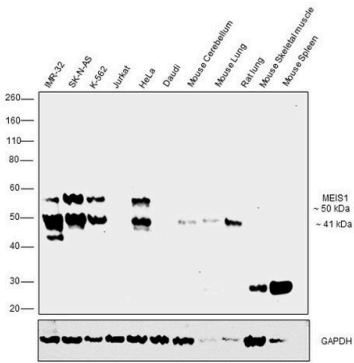


MEIS1 Monoclonal Antibody (OTI2A3)

Product Details	
Size	100 µL
Species Reactivity	Human, Mouse, Rat
Host/Isotype	Mouse / IgG1
Class	Monoclonal
Type	Antibody
Clone	OTI2A3
Conjugate	Unconjugated
Immunogen	Human recombinant protein fragment corresponding to amino acids 176-390 of MEIS1 produced in E.coli
Form	Liquid
Concentration	1 mg/mL
Purification	Affinity Chromatography
Storage buffer	PBS, pH 7.3, with 1% BSA, 50% glycerol
Contains	0.02% sodium azide
Storage conditions	-20° C, Avoid Freeze/Thaw Cycles
RRID	AB_2724671

Applications	Tested Dilution	Publications
Western Blot (WB)	1:2,000	-
Immunohistochemistry (Paraffin) (IHC (P))	1:500	-
Immunocytochemistry (ICC/IF)	1:500	-

Product Images For MEIS1 Monoclonal Antibody (OTI2A3)

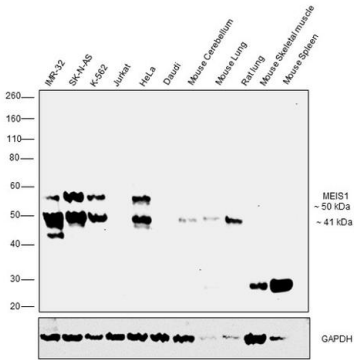


MEIS1 Antibody (MA5-27191)

Antibody specificity was demonstrated by detection of differential basal expression of the target across cell lines and tissues tested owing to their inherent genetic constitution. Relative expression of MEIS1 was observed in IMR-32, SK-N-AS, K-562, HeLa in comparison to Jurkat, Daudi and in Mouse Cerebellum, Mouse Lung, Rat Lung in comparison to Mouse Skeletal Muscle and Mouse Spleen using Anti-MEIS1 Monoclonal Antibody (Product # MA5-27191) in Western Blot. {RE}

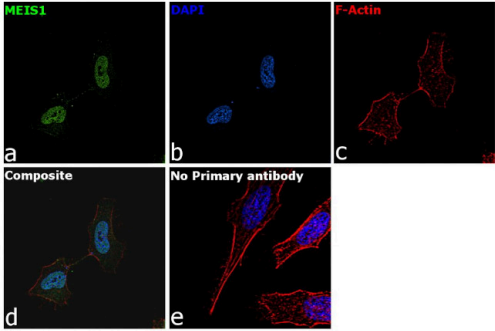
MEIS1 Antibody (MA5-27191) in WB

Western blot was performed using Anti-MEIS1 Monoclonal Antibody (Product # MA5-27191). A 50 kDa band and a 41kDa band corresponding to different isoforms of MEIS1 was observed in IMR-32, SK-N-AS, K-562, HeLa cell lines. The 50 kDa band corresponding to MEIS1 was also observed in Mouse Cerebellum, Mouse Lung, Rat Lung and Mouse Skeletal muscle. A non-characterized band corresponding to 58 kDa was observed in the cell lines tested. Modified Whole cell extracts (30 µg lysate) of IMR-32 (Lane 1), SK-A-NS (Lane 2), K-562 (Lane 3), Jurkat (Lane 4), HeLa (Lane 5), Daudi (Lane 6), tissue extracts of Mouse Cerebellum (Lane 7), Mouse Lung (Lane 8), Rat Lung (Lane 9), Mouse Skeletal Muscle (lane 10) and Mouse Spleen (Lane 11) were electrophoresed using NuPAGE™ 4-12% Bis-Tris Protein Gel (Product # NP0322BOX). Resolved proteins were then transferred onto a nitrocellulose membrane (Product # IB23001) by iBlot® 2 Dry Blotting System (Product # IB21001). The blot was probed with the primary antibody (1:500 dilution) and detected by chemiluminescence Goat Anti-Mouse IgG Secondary Antibody, HRP conjugate (Product # A28177, 1:4000 dilution) using the iBright FL 1000 (Product # A32752). Chemiluminescent detection was performed using Novex® ECL Chemiluminescent Substrate Reagent Kit (Product # WP20005).



MEIS1 Antibody (MA5-27191) in ICC/IF

Immunofluorescence analysis of MEIS1 was performed using 70% confluent log phase HeLa cells. The cells were fixed with 4% Paraformaldehyde for 10 minutes, permeabilized with 0.1% Triton™ X-100 for 15 minutes, and blocked with 2% BSA for 10 minutes at room temperature. The cells were labeled with MEIS1 Monoclonal Antibody (Product # MA5-27191) at 1:500 dilution in 0.1% BSA, incubated at 4 degree Celsius overnight and then labeled with Goat anti-Mouse IgG (H+L) Superclonal™ Secondary Antibody, Alexa Fluor® 488 conjugate (Product # A28175) at a dilution of 1:2000 dilution for 45 minutes at room temperature (Panel a: Green). Nuclei (Panel b: Blue) were stained with ProLong™ Diamond Antifade Mountant with DAPI (Product # P36962). F-actin (Panel c: Red) was stained with Rhodamine Phalloidin (Product # R415, 1:300). Panel d represents the merged image showing Cytoplasmic localization. Panel e represents control cells with no primary antibody to assess background. The images were captured at 60X magnification.



View more figures on thermofisher.com

For Research Use Only. Not for use in diagnostic procedures. Not for resale without express authorization. Products are warranted to operate or perform substantially in conformance with published Product specifications in effect at the time of sale, as set forth in the Production documentation, specifications and/or accompanying package inserts ("Documentation"). No claim of suitability for use in applications regulated by FDA is made. The warranty provided herein is valid only when used by properly trained individuals. Unless otherwise stated in the Documentation, this warranty is limited to one year from date of shipment when the Product is subjected to normal, proper and intended usage. This warranty does not extend to anyone other than the Buyer. Any model or sample furnished to Buyer is merely illustrative of the general type and quality of goods and does not represent that any Product will conform to such model or sample. NO OTHER WARRANTIES, EXPRESS OR IMPLIED, ARE GRANTED INCLUDING WITHOUT LIMITATION, IMPLIED WARRANTIES OF MERCHANTABILITY, FITNESS FOR ANY PARTICULAR PURPOSE, OR NON-INFRINGEMENT. BUYER'S EXCLUSIVE REMEDY FOR NON-CONFORMING PRODUCTS DURING THE WARRANTY PERIOD IS LIMITED TO REPAIR, REPLACEMENT OF OR REFUND FOR THE NON-CONFORMING PRODUCT(S) AT SELLER'S SOLE OPTION. THERE IS NO OBLIGATION TO REPAIR, REPLACE OR REFUND FOR PRODUCTS AS THE RESULT OF (i) ACCIDENT, DISASTER OR EVENT OF FORCE MAJEURE, (ii) MISUSE, FAULT OR NEGLIGENCE OF OR BY BUYER, (iii) USE OF THE PRODUCTS IN A MANNER FOR WHICH THEY WERE NOT DESIGNED, OR (iv) IMPROPER STORAGE AND HANDLING OF THE PRODUCTS. Unless otherwise expressly stated on the Product or in the documentation accompanying the Product, the Product is intended for research only and is not to be used for any other purpose, including without limitation, unauthorized commercial uses, in vitro diagnostic uses, ex vivo or in vivo therapeutic uses, or any type of consumption by or application to human or animals.