

# Phospho-Shp2 (Tyr580) Recombinant Rabbit Monoclonal Antibody (Shp2Y580-4A2)

Product Details	
Size	200 µL
Species Reactivity	Human, Mouse
Published Species	Human
Host/Isotype	Rabbit / IgG, kappa
Expression system	HEK293 cells
Class	Recombinant Monoclonal
Type	Antibody
Clone	Shp2Y580-4A2
Conjugate	Unconjugated
Immunogen	A synthetic phospho-peptide corresponding to residues surrounding Tyr580 of human phospho Shp2.
Form	Liquid
Concentration	0.5 mg/mL
Purification	Protein A/G
Storage buffer	PBS, pH 7.4, with 50% glycerol, 0.1% BSA
Contains	0.02% sodium azide
Storage conditions	-20°C
RRID	AB_2745051

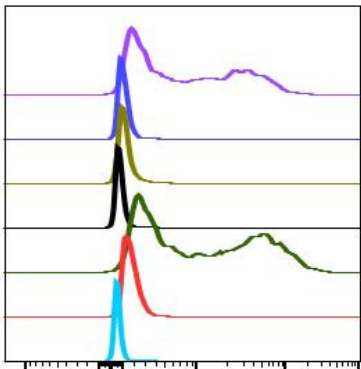
Applications	Tested Dilution	Publications
Flow Cytometry (Flow)	1-1,000 ng/mL	1 Publication

## Product Specific Information

Recombinant rabbit monoclonal antibodies are produced using in vitro expression systems. The expression systems are developed by cloning in the specific antibody DNA sequences from immunoreactive rabbits. Then, individual clones are screened to select the best candidates for production. The advantages of using recombinant rabbit monoclonal antibodies include: better specificity and sensitivity, lot-to-lot consistency, animal origin-free formulations, and broader immunoreactivity to diverse targets due to larger rabbit immune repertoire.

Phospho-Shp2 (Tyr580) Antibody (MA5-28046) in Flow

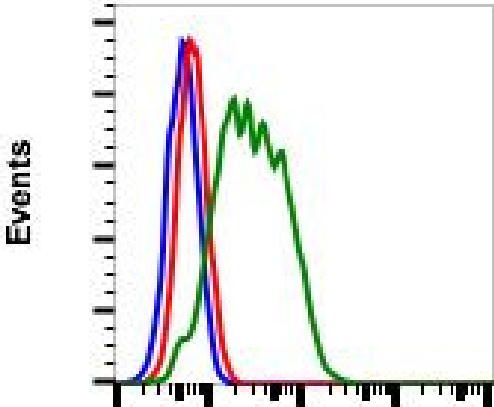
Flow cytometry of Phospho-Shp2 (Tyr580) using THP1 cells. Samples were incubated in monoclonal Phospho-Shp2 (Tyr580) antibody (Product # MA5-36977) with a dilution of 0.1 µg/mL. Images correspond with the following conditions: negative control (light blue), untreated (red), treated with IFNα/IL-4 /pervanadate (green), untreated and blocked with phospho-peptide (black), treated and blocked with phospho peptide (gold), untreated and blocked with non-phospho peptide (dark blue), treated and blocked with non-phospho peptide (purple).



SampleID	Median : BL1-A
IFN 4A2 N	5690
Ctrl 4A2 N	964
IFN 4A2 P	1064
Ctrl 4A2 P	682
IFN 4A2	9046
Ctrl 4A2	1545
Ctrl 2' only	522

Phospho-Shp2 (Tyr580) Antibody (MA5-28046) in Flow

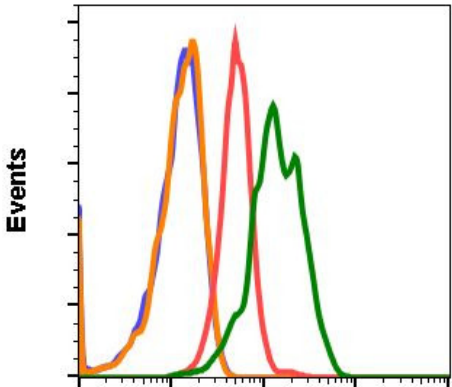
Flow cytometry of Phospho-Shp2 (Tyr580) using U937 cells. Samples were incubated in monoclonal Phospho-Shp2 (Tyr580) antibody (Product # MA5-36977) with a dilution of 0.05 µg/mL. Images correspond with the following conditions: negative control (blue), untreated (red), treated with IFNα IL4 and pervanadate (green).



Phospho-Shp2(Y580)

Phospho-Shp2 (Tyr580) Antibody (MA5-28046) in Flow

Flow cytometry of Phospho-Shp2 (Tyr580) using NIH3T3 cells. Samples were incubated in monoclonal Phospho-Shp2 (Tyr580) antibody (Product # MA5-36977) with a dilution of 0.1 µg/mL. Images correspond with the following conditions: negative control (blue), control (orange), untreated (red), treated with IFNα IL-4 and pervanadate (green).



Phospho-Shp2 (Y580)

Flow Cytometry (1)

PeerJ	Year 2021
<b>Abundant CpG-sequences in human genomes inhibit KIR3DL2-expressing NK cells.</b>	Species Human
"MA5-28046 was used in Flow Cytometry to show that KIR3DL2 discriminates between self and non-self DNA using nucleotides that flank the CpG motif, thereby altering the immune response."	
Authors: Pugh J,Guethlein L,Parham P	

For Research Use Only. Not for use in diagnostic procedures. Not for resale without express authorization. Products are warranted to operate or perform substantially in conformance with published Product specifications in effect at the time of sale, as set forth in the Production documentation, specifications and/or accompanying package inserts ("Documentation"). No claim of suitability for use in applications regulated by FDA is made. The warranty provided herein is valid only when used by properly trained individuals. Unless otherwise stated in the Documentation, this warranty is limited to one year from date of shipment when the Product is subjected to normal, proper and intended usage. This warranty does not extend to anyone other than the Buyer. Any model or sample furnished to Buyer is merely illustrative of the general type and quality of goods and does not represent that any Product will conform to such model or sample. NO OTHER WARRANTIES, EXPRESS OR IMPLIED, ARE GRANTED INCLUDING WITHOUT LIMITATION, IMPLIED WARRANTIES OF MERCHANTABILITY, FITNESS FOR ANY PARTICULAR PURPOSE, OR NON INFRINGEMENT. BUYER'S EXCLUSIVE REMEDY FOR NON-CONFORMING PRODUCTS DURING THE WARRANTY PERIOD IS LIMITED TO REPAIR, REPLACEMENT OF OR REFUND FOR THE NON-CONFORMING PRODUCT(S) AT SELLER'S SOLE OPTION. THERE IS NO OBLIGATION TO REPAIR, REPLACE OR REFUND FOR PRODUCTS AS THE RESULT OF (I) ACCIDENT, DISASTER OR EVENT OF FORCE MAJEURE, (II) MISUSE, FAULT OR NEGLIGENCE OF OR BY BUYER, (III) USE OF THE PRODUCTS IN A MANNER FOR WHICH THEY WERE NOT DESIGNED, OR (IV) IMPROPER STORAGE AND HANDLING OF THE PRODUCTS. Unless otherwise expressly stated on the Product or in the documentation accompanying the Product, the Product is intended for research only and is not to be used for any other purpose, including without limitation, unauthorized commercial uses, in vitro diagnostic uses, ex vivo or in vivo therapeutic uses, or any type of consumption by or application to human or animals.