

Lysozyme Recombinant Rabbit Monoclonal Antibody (ST50-02)

Product Details	
Size	100 µL
Species Reactivity	Human, Mouse
Host/Isotype	Rabbit / IgG
Expression system	HEK293 cells
Class	Recombinant Monoclonal
Type	Antibody
Clone	ST50-02
Conjugate	Unconjugated
Immunogen	Synthetic peptide within Human Lysozyme C aa 36-85
Form	Liquid
Concentration	1 mg/mL
Purification	Protein A
Storage buffer	TBS, pH 7.4, with 40% Glycerol, 0.05% BSA
Contains	0.05% sodium azide
Storage conditions	Store at 4°C short term. For long term storage, store at -20°C, avoiding freeze/thaw cycles.
RRID	AB_2809443

Applications	Tested Dilution	Publications
Western Blot (WB)	1:1,000-1:2,000	-
Immunohistochemistry (IHC)	-	1 Publication
Immunohistochemistry (Paraffin) (IHC (P))	1:200-1:500	-
Immunocytochemistry (ICC/IF)	1:50-1:200	-

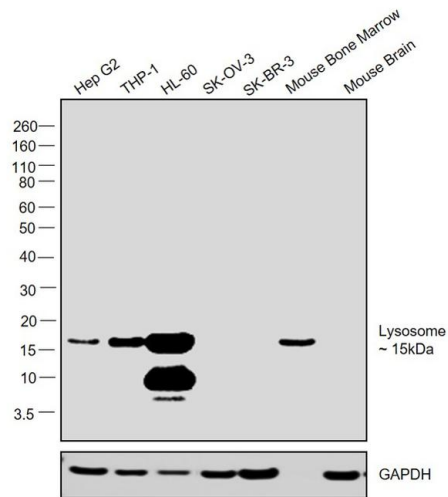
Product Specific Information

Recombinant rabbit monoclonal antibodies are produced using in vitro expression systems. The expression systems are developed by cloning in the specific antibody DNA sequences from immunoreactive rabbits. Then, individual clones are screened to select the best candidates for production. The advantages of using recombinant rabbit monoclonal antibodies include: better specificity and sensitivity, lot-to-lot consistency, animal origin-free formulations, and broader immunoreactivity to diverse targets due to larger rabbit immune repertoire.

Product Images For Lysozyme Recombinant Rabbit Monoclonal Antibody (ST50-02)

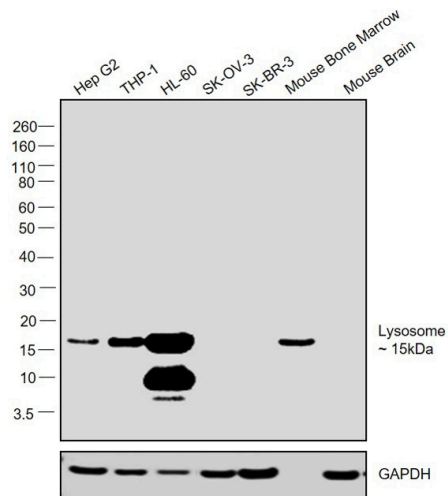
Lysozyme Antibody (MA5-32154) in WB

Western blot was performed using Anti-Lysozyme Recombinant Rabbit Monoclonal Antibody (ST50-02) (Product # MA5-32154) and a 15kDa band corresponding to Lysozyme was observed across cell lines and tissues except SK-O-V3, SK-BR-3 and Mouse Brain which are reported to be negative. Whole cell extracts (30 µg lysate) of Hep G2 (Lane 1), THP-1 (Lane 2), HL-60 (Lane 3), SK-O-V3 (Lane 4), SK-BR-3 (Lane 5), Mouse Bone Marrow (Lane 6) and Mouse Brain (Lane 7) were electrophoresed using Novex® NuPAGE® 4-12 % Bis-Tris gel (Product # NP0322BOX). Resolved proteins were then transferred onto a nitrocellulose membrane (Product # IB23001) by iBlot® 2 Dry Blotting System (Product # IB21001). The blot was probed with the primary antibody (1:2000 dilution) and detected by chemiluminescence Goat anti-Rabbit IgG (Heavy Chain), Superclonal™ Recombinant Secondary Antibody, HRP (Product # A27036, 1:4000 dilution) using the iBright FL 1000 (Product # A32752). Chemiluminescent detection was performed using Novex® ECL Chemiluminescent Substrate Reagent Kit (Product # WP20005).



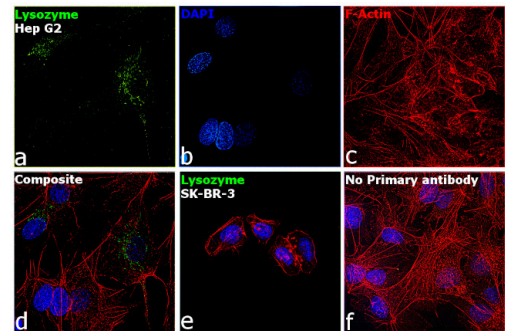
Lysozyme Antibody (MA5-32154)

Antibody specificity was demonstrated by detection of differential basal expression of the target across cells tested owing to their inherent genetic constitution. Relative expression of Lysozyme was observed in Hep G2, THP-1, HL-60 and Mouse Bone Marrow in comparison to HEL 92.1.7, SK-BR-3, SK-O-V3 and Mouse Brain using Anti-Lysozyme Recombinant Rabbit Monoclonal Antibody (ST50-02) (Product # MA5-32154). {RE}



Lysozyme Antibody (MA5-32154)

Antibody specificity was demonstrated by detection of differential basal expression of the target across cell models owing to their inherent genetic constitution. Immunofluorescence analysis using Anti-Lysozyme Recombinant Rabbit Monoclonal Antibody (ST50-02) (Product # MA5-32154) shows increased expression of Lysozyme in Hep G2 cell line when compared to SK-BR-3. {RE}



View more figures on thermofisher.com

Immunohistochemistry (1)

Journal of anatomy	Year 2023
Butyrylcholinesterase distribution in the mouse gastrointestinal tract: An immunohistochemical study.	
"Published figure using Lysozyme recombinant monoclonal antibody (Product # MA5-32154) in Immunohistochemistry"	
Authors: Severi I,Abbatelli S,Perugini J,Di Mercurio E,Senzacqua M,Giordano A	

For Research Use Only. Not for use in diagnostic procedures. Not for resale without express authorization. Products are warranted to operate or perform substantially in conformance with published Product specifications in effect at the time of sale, as set forth in the Production documentation, specifications and/or accompanying package inserts ("Documentation"). No claim of suitability for use in applications regulated by FDA is made. The warranty provided herein is valid only when used by properly trained individuals. Unless otherwise stated in the Documentation, this warranty is limited to one year from date of shipment when the Product is subjected to normal, proper and intended usage. This warranty does not extend to anyone other than the Buyer. Any model or sample furnished to Buyer is merely illustrative of the general type and quality of goods and does not represent that any Product will conform to such model or sample. NO OTHER WARRANTIES, EXPRESS OR IMPLIED, ARE GRANTED INCLUDING WITHOUT LIMITATION, IMPLIED WARRANTIES OF MERCHANTABILITY, FITNESS FOR ANY PARTICULAR PURPOSE, OR NON INFRINGEMENT. BUYER'S EXCLUSIVE REMEDY FOR NON-CONFORMING PRODUCTS DURING THE WARRANTY PERIOD IS LIMITED TO REPAIR, REPLACEMENT OF OR REFUND FOR THE NON-CONFORMING PRODUCT(S) AT SELLER'S SOLE OPTION. THERE IS NO OBLIGATION TO REPAIR, REPLACE OR REFUND FOR PRODUCTS AS THE RESULT OF (I) ACCIDENT, DISASTER OR EVENT OF FORCE MAJEURE, (II) MISUSE, FAULT OR NEGLIGENCE OF OR BY BUYER, (III) USE OF THE PRODUCTS IN A MANNER FOR WHICH THEY WERE NOT DESIGNED, OR (IV) IMPROPER STORAGE AND HANDLING OF THE PRODUCTS. Unless otherwise expressly stated on the Product or in the documentation accompanying the Product, the Product is intended for research only and is not to be used for any other purpose, including without limitation, unauthorized commercial uses, in vitro diagnostic uses, ex vivo or in vivo therapeutic uses, or any type of consumption by or application to human or animals.