

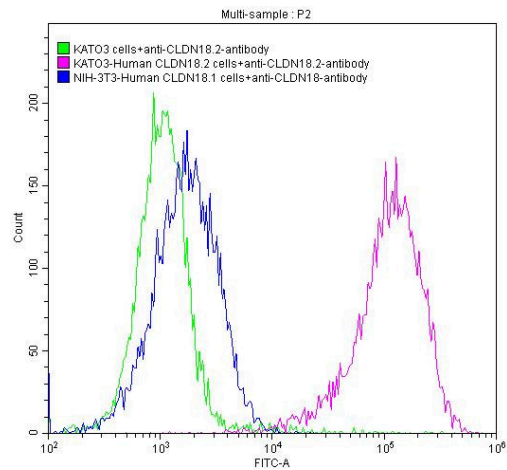
Claudin 18.2 Recombinant Human Monoclonal Antibody (9C2)

Product Details	
Size	100 µL
Species Reactivity	Human
Host/Isotype	Human / IgG1
Expression system	HEK293 cells
Class	Recombinant Monoclonal
Type	Antibody
Clone	9C2
Conjugate	Unconjugated
Immunogen	Recombinant Human Claudin-18.2 protein
Form	Liquid
Concentration	1 mg/mL
Purification	Affinity chromatography
Storage buffer	PBS, pH 7.4, with 50% glycerol
Contains	0.03% ProClin 300
Storage conditions	-20°C or -80°C if preferred
RRID	AB_2912291

Applications	Tested Dilution	Publications
Flow Cytometry (Flow)	1:50-1:200	-
ELISA (ELISA)	Assay-dependent	-

Product Specific Information
Antibody tested in Indirect ELISA

Product Images For Claudin 18.2 Recombinant Human Monoclonal Antibody (9C2)

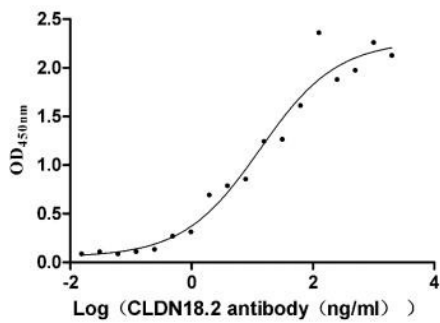


Claudin 18.2 Antibody (MA5-43155) in Flow

Flow Cytometry analysis of Claudin 18.2 in untransfected KATO3 cells (green line), transfected Human CLDN18.2 KATO3 stable cells (red line) and transfected Human CLDN18.1 NIH-3T3 stable cells (blue line) using Claudin 18.2 Monoclonal Antibody (Product # MA5-43155) (2 µg/1x10⁶cells), washed and then followed by FITC-conjugated anti-Human IgG Fc antibody.

Claudin 18.2 Antibody (MA5-43155) in ELISA

ELISA assay of Claudin 18.2 using Claudin 18.2 Monoclonal Antibody (Product # MA5-43155).



For Research Use Only. Not for use in diagnostic procedures. Not for resale without express authorization. Products are warranted to operate or perform substantially in conformance with published Product specifications in effect at the time of sale, as set forth in the Production documentation, specifications and/or accompanying package inserts ("Documentation"). No claim of suitability for use in applications regulated by FDA is made. The warranty provided herein is valid only when used by properly trained individuals. Unless otherwise stated in the Documentation, this warranty is limited to one year from date of shipment when the Product is subjected to normal, proper and intended usage. This warranty does not extend to anyone other than the Buyer. Any model or sample furnished to Buyer is merely illustrative of the general type and quality of goods and does not represent that any Product will conform to such model or sample. NO OTHER WARRANTIES, EXPRESS OR IMPLIED, ARE GRANTED INCLUDING WITHOUT LIMITATION, IMPLIED WARRANTIES OF MERCHANTABILITY, FITNESS FOR ANY PARTICULAR PURPOSE, OR NON INFRINGEMENT. BUYER'S EXCLUSIVE REMEDY FOR NON-CONFORMING PRODUCTS DURING THE WARRANTY PERIOD IS LIMITED TO REPAIR, REPLACEMENT OF OR REFUND FOR THE NON-CONFORMING PRODUCT(S) AT SELLER'S SOLE OPTION. THERE IS NO OBLIGATION TO REPAIR, REPLACE OR REFUND FOR PRODUCTS AS THE RESULT OF (i) ACCIDENT, DISASTER OR EVENT OF FORCE MAJEURE, (ii) MISUSE, FAULT OR NEGLIGENCE OF OR BY BUYER, (iii) USE OF THE PRODUCTS IN A MANNER FOR WHICH THEY WERE NOT DESIGNED, OR (iv) IMPROPER STORAGE AND HANDLING OF THE PRODUCTS. Unless otherwise expressly stated on the Product or in the documentation accompanying the Product, the Product is intended for research only and is not to be used for any other purpose, including without limitation, unauthorized commercial uses, in vitro diagnostic uses, ex vivo or in vivo therapeutic uses, or any type of consumption by or application to human or animals.