

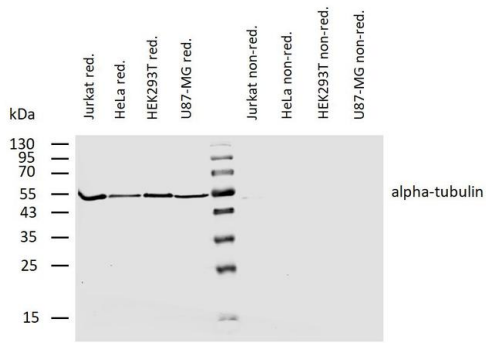
# alpha Tubulin Monoclonal Antibody (YOL1/34)

Product Details	
Size	100 µg
Species Reactivity	Avian, Human, Mammal, Mouse, Rat, Yeast
Host/Isotype	Rat / IgG2a
Class	Monoclonal
Type	Antibody
Clone	YOL1/34
Conjugate	Unconjugated
Immunogen	Yeast tubulin
Form	Liquid
Concentration	1 mg/mL
Purification	Protein G
Storage buffer	PBS, pH 7.4
Contains	15mM sodium azide
Storage conditions	4° C, do not freeze
RRID	AB_2912978

Applications	Tested Dilution	Publications
Western Blot (WB)	1-2 µg/mL	-
Immunohistochemistry (Paraffin) (IHC (P))	Assay-dependent	-
Immunohistochemistry (Frozen) (IHC (F))	Assay-dependent	-
Immunocytochemistry (ICC/IF)	4-8 µg/mL	-
Flow Cytometry (Flow)	Assay-dependent	-
ELISA (ELISA)	Assay-dependent	-

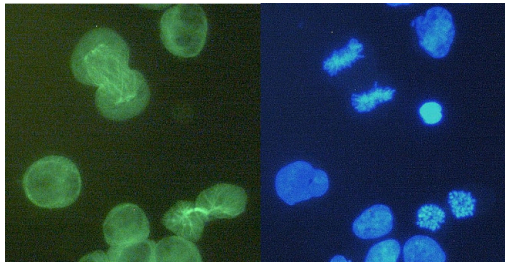
**Product Specific Information**  
Western Blot: Reducing conditions.

Product Images For alpha Tubulin Monoclonal Antibody (YOL1/34)



alpha Tubulin Antibody (MA5-44046) in WB

Western blotting analysis of human alpha-tubulin using mouse Monoclonal antibody YOL1/34 (Product # MA5-44046) on lysates of various cell lines under reducing and non-reducing conditions. Nitrocellulose membrane was probed with 2µg/mL of mouse anti-alpha-tubulin monoclonal antibody followed by IRDye800-conjugated anti-mouse secondary antibody. A specific band was detected for alpha-tubulin at approximately 54kDa.



alpha Tubulin Antibody (MA5-44046) in ICC/IF

Immunocytochemistry staining of alpha-tubulin in K562 cells using purified rat Monoclonal antibody YOL1/34 (Product # MA5-44046), concentration in sample 6 µg/mL, DAR FITC (left picture) vs. Hoechst 34580 nuclear staining (right picture).

For Research Use Only. Not for use in diagnostic procedures. Not for resale without express authorization. Products are warranted to operate or perform substantially in conformance with published Product specifications in effect at the time of sale, as set forth in the Production documentation, specifications and/or accompanying package inserts ("Documentation"). No claim of suitability for use in applications regulated by FDA is made. The warranty provided herein is valid only when used by properly trained individuals. Unless otherwise stated in the Documentation, this warranty is limited to one year from date of shipment when the Product is subjected to normal, proper and intended usage. This warranty does not extend to anyone other than the Buyer. Any model or sample furnished to Buyer is merely illustrative of the general type and quality of goods and does not represent that any Product will conform to such model or sample. NO OTHER WARRANTIES, EXPRESS OR IMPLIED, ARE GRANTED INCLUDING WITHOUT LIMITATION, IMPLIED WARRANTIES OF MERCHANTABILITY, FITNESS FOR ANY PARTICULAR PURPOSE, OR NON-INFRINGEMENT. BUYER'S EXCLUSIVE REMEDY FOR NON-CONFORMING PRODUCTS DURING THE WARRANTY PERIOD IS LIMITED TO REPAIR, REPLACEMENT OF OR REFUND FOR THE NON-CONFORMING PRODUCT(S) AT SELLER'S SOLE OPTION. THERE IS NO OBLIGATION TO REPAIR, REPLACE OR REFUND FOR PRODUCTS AS THE RESULT OF (I) ACCIDENT, DISASTER OR EVENT OF FORCE MAJEURE, (II) MISUSE, FAULT OR NEGLIGENCE OF OR BY BUYER, (III) USE OF THE PRODUCTS IN A MANNER FOR WHICH THEY WERE NOT DESIGNED, OR (IV) IMPROPER STORAGE AND HANDLING OF THE PRODUCTS. Unless otherwise expressly stated on the Product or in the documentation accompanying the Product, the Product is intended for research only and is not to be used for any other purpose, including without limitation, unauthorized commercial uses, in vitro diagnostic uses, ex vivo or in vivo therapeutic uses, or any type of consumption by or application to human or animals.