

# Kir6.1 (KCNJ8) Monoclonal Antibody (N366/60), APC

Product Details	
Size	100 µg
Species Reactivity	Human, Mouse, Rat
Host/Isotype	Mouse / IgG2a
Class	Monoclonal
Type	Antibody
Clone	N366/60
Conjugate	APC
Excitation/Emission Max	651/660 nm
Immunogen	Fusion protein amino acids 306-424 (Cytoplasmic C-terminus) of rat Kir6.1
Form	Liquid
Concentration	1 mg/mL
Purification	Protein G
Storage buffer	47.35mM phosphate/2.15mM MES, pH 7.4, with 1.033mM EDTA
Contains	no preservative
Storage conditions	4° C

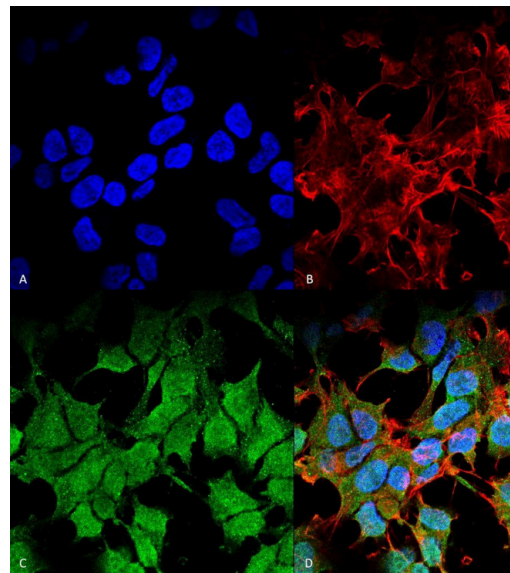
Applications	Tested Dilution	Publications
Western Blot (WB)	1:1,000	-
Immunohistochemistry (IHC)	Assay-dependent	-
Immunocytochemistry (ICC/IF)	1:100	-

## Product Specific Information

A 1:100 dilution of MA5-45741 was sufficient for detection of Kir6.1 in 20 µg of mouse brain lysate by ECL immunoblot analysis using Goat anti-mouse IgG:HRP as the secondary antibody. |Detects approximately 45kDa.

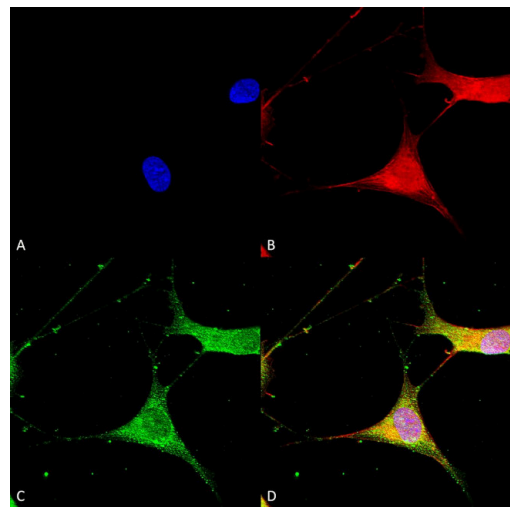
This antibody was formerly sold as clone S366-60.

Product Images For Kir6.1 (KCNJ8) Monoclonal Antibody (N366/60), APC



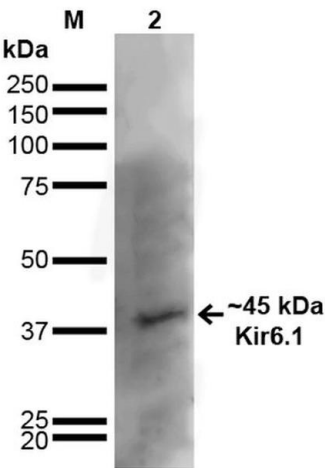
**Kir6.1 (KCNJ8) Antibody (MA5-45741) in ICC/IF**

Immunocytochemistry/Immunofluorescence analysis using human neuroblastoma cells. Fixation involved 4% Formaldehyde for 15 min at RT. Samples were incubated with Kir6.1 monoclonal antibody (Product # MA5-45741) at 1:100 for 60 min at RT, followed by Goat Anti-Mouse ATTO 488 at 1:100 for 60 min at RT. Counterstain used was Phalloidin Texas Red F-Actin stain; DAPI (blue) nuclear stain at 1:1,000, 1:5,000 for 60 min RT, 5 min RT. Localization: Membrane. Magnification: 60X. (A) DAPI (blue) nuclear stain. (B) Phalloidin Texas Red F-Actin stain. (C) Kir6.1 antibody. (D) Composite.



**Kir6.1 (KCNJ8) Antibody (MA5-45741) in ICC/IF**

Immunocytochemistry/Immunofluorescence analysis using human neuroblastoma cells. Fixation involved 4% PFA for 15 min. Samples were incubated with Kir6.1 monoclonal antibody (Product # MA5-45741) at 1:100 for overnight at 4°C with slow rocking, followed by AlexaFluor 488 at 1:1,000 for 1 hour at RT. Counterstain used was Phalloidin-iFluor 647 (red) F-Actin stain; Hoechst (blue) nuclear stain at 1:800, 1.6mM for 20 min at RT. (A) Hoechst (blue) nuclear stain. (B) Phalloidin-iFluor 647 (red) F-Actin stain. (C) Kir6.1 antibody (D) Composite.



**Kir6.1 (KCNJ8) Antibody (MA5-45741) in WB**

Western Blot analysis of Rat Brain showing detection of ~45 kDa Kir6.1 protein.1. Lane 1: MW Ladder. Lane 2: Rat Brain. Load: 20 µg. Blocking: 2% GE Healthcare Blocker for 1 hour at RT. Samples were incubated with Kir6.1 monoclonal antibody (Product # MA5-45741) at 1:1,000 for 16 hours at 4°C, followed by Goat Anti-Mouse IgG: HRP at 1:200 for 1 hour at RT. Color Development: ECL solution for 6 min at RT. Predicted/Observed Size: ~45 kDa. Other Band(s): ~100 kDa.

For Research Use Only. Not for use in diagnostic procedures. Not for resale without express authorization. Products are warranted to operate or perform substantially in conformance with published Product specifications in effect at the time of sale, as set forth in the Production documentation, specifications and/or accompanying package inserts ("Documentation"). No claim of suitability for use in applications regulated by FDA is made. The warranty provided herein is valid only when used by properly trained individuals. Unless otherwise stated in the Documentation, this warranty is limited to one year from date of shipment when the Product is subjected to normal, proper and intended usage. This warranty does not extend to anyone other than the Buyer. Any model or sample furnished to Buyer is merely illustrative of the general type and quality of goods and does not represent that any Product will conform to such model or sample. NO OTHER WARRANTIES, EXPRESS OR IMPLIED, ARE GRANTED INCLUDING WITHOUT LIMITATION, IMPLIED WARRANTIES OF MERCHANTABILITY, FITNESS FOR ANY PARTICULAR PURPOSE, OR NON-INFRINGEMENT. BUYER'S EXCLUSIVE REMEDY FOR NON-CONFORMING PRODUCTS DURING THE WARRANTY PERIOD IS LIMITED TO REPAIR, REPLACEMENT OF OR REFUND FOR THE NON-CONFORMING PRODUCT(S) AT SELLER'S SOLE OPTION. THERE IS NO OBLIGATION TO REPAIR, REPLACE OR REFUND FOR PRODUCTS AS THE RESULT OF (i) ACCIDENT, DISASTER OR EVENT OF FORCE MAJEURE, (ii) MISUSE, FAULT OR NEGLIGENCE OF OR BY BUYER, (iii) USE OF THE PRODUCTS IN A MANNER FOR WHICH THEY WERE NOT DESIGNED, OR (iv) IMPROPER STORAGE AND HANDLING OF THE PRODUCTS. Unless otherwise expressly stated on the Product or in the documentation accompanying the Product, the Product is intended for research only and is not to be used for any other purpose, including without limitation, unauthorized commercial uses, in vitro diagnostic uses, ex vivo or in vivo therapeutic uses, or any type of consumption by or application to human or animals.