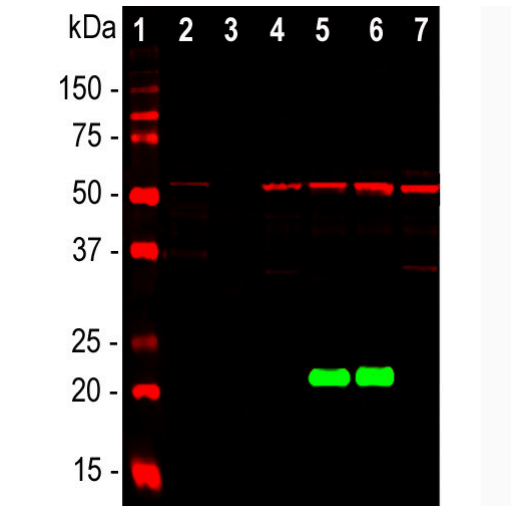


DJ-1 Monoclonal Antibody (4H4)

Product Details	
Size	100 µL
Species Reactivity	Bovine, Human
Host/Isotype	Mouse / IgG1
Class	Monoclonal
Type	Antibody
Clone	4H4
Conjugate	Unconjugated
Immunogen	Full length recombinant human DJ1 expressed in and purified from E. coli.
Form	Liquid
Concentration	1 mg/mL
Purification	Protein A/G
Storage buffer	PBS with 50% glycerol
Contains	5mM sodium azide
Storage conditions	Store at 4°C short term. For long term storage, store at -20°C, avoiding freeze/thaw cycles.

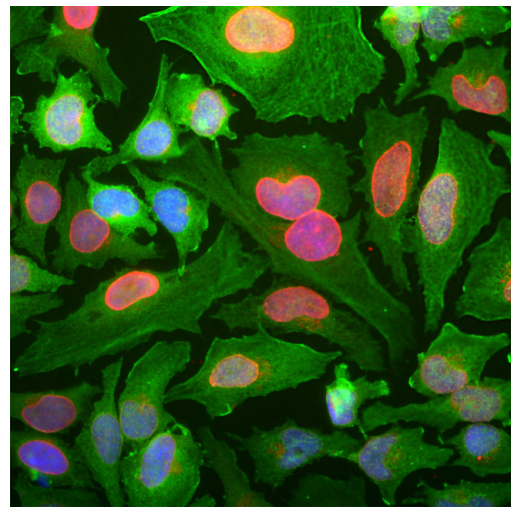
Applications	Tested Dilution	Publications
Western Blot (WB)	1:5,000	-
Immunohistochemistry (IHC)	1:1,000	-
Immunocytochemistry (ICC/IF)	1:1,000	-

Product Images For DJ-1 Monoclonal Antibody (4H4)



DJ-1 Antibody (MA5-47436) in WB

Western blot analysis of DJ-1 in whole brain and cell lysates. Samples were incubated in DJ-1 monoclonal antibody (Product # MA5-47436) using a dilution of 1:5,000 (green). [1] protein standard, [2] rat brain, [3] mouse brain, [4] NIH-3T3, [5] HeLa, [6] HEK293, and [7] C6 cells. The MCA-DJ1 antibody detects protein with apparent molecular weight of 21 kDa but only in human cell lines, since it does not recognize the rat or mouse DJ1 protein. The blot was simultaneously probed with chicken pAb to vimentin dilution 1:5,000 in red, revealing a single band at about 50 kDa present in all lanes, though at much lower levels in the tissue lysates.



DJ-1 Antibody (MA5-47436) in ICC/IF

Immunofluorescent analysis of DJ-1 in HeLa cells. Samples were stained with DJ-1 monoclonal antibody (Product # MA5-47436) using a dilution of 1:1,000 (green). Costained with chicken pAb to lamin A/C (Product # PA5-143574) dilution 1:5,000 in red. The DJ-1 antibody reveals strong cytoplasmic staining for DJ1 protein, while LaminAC antibody produces strong staining of nuclear lamina.

For Research Use Only. Not for use in diagnostic procedures. Not for resale without express authorization. Products are warranted to operate or perform substantially in conformance with published Product specifications in effect at the time of sale, as set forth in the Production documentation, specifications and/or accompanying package inserts ("Documentation"). No claim of suitability for use in applications regulated by FDA is made. The warranty provided herein is valid only when used by properly trained individuals. Unless otherwise stated in the Documentation, this warranty is limited to one year from date of shipment when the Product is subjected to normal, proper and intended usage. This warranty does not extend to anyone other than the Buyer. Any model or sample furnished to Buyer is merely illustrative of the general type and quality of goods and does not represent that any Product will conform to such model or sample. NO OTHER WARRANTIES, EXPRESS OR IMPLIED, ARE GRANTED INCLUDING WITHOUT LIMITATION, IMPLIED WARRANTIES OF MERCHANTABILITY, FITNESS FOR ANY PARTICULAR PURPOSE, OR NON INFRINGEMENT. BUYER'S EXCLUSIVE REMEDY FOR NON-CONFORMING PRODUCTS DURING THE WARRANTY PERIOD IS LIMITED TO REPAIR, REPLACEMENT OF OR REFUND FOR THE NON-CONFORMING PRODUCT(S) AT SELLER'S SOLE OPTION. THERE IS NO OBLIGATION TO REPAIR, REPLACE OR REFUND FOR PRODUCTS AS THE RESULT OF (I) ACCIDENT, DISASTER OR EVENT OF FORCE MAJEURE, (II) MISUSE, FAULT OR NEGLIGENCE OF OR BY BUYER, (III) USE OF THE PRODUCTS IN A MANNER FOR WHICH THEY WERE NOT DESIGNED, OR (IV) IMPROPER STORAGE AND HANDLING OF THE PRODUCTS. Unless otherwise expressly stated on the Product or in the documentation accompanying the Product, the Product is intended for research only and is not to be used for any other purpose, including without limitation, unauthorized commercial uses, in vitro diagnostic uses, ex vivo or in vivo therapeutic uses, or any type of consumption by or application to human or animals.