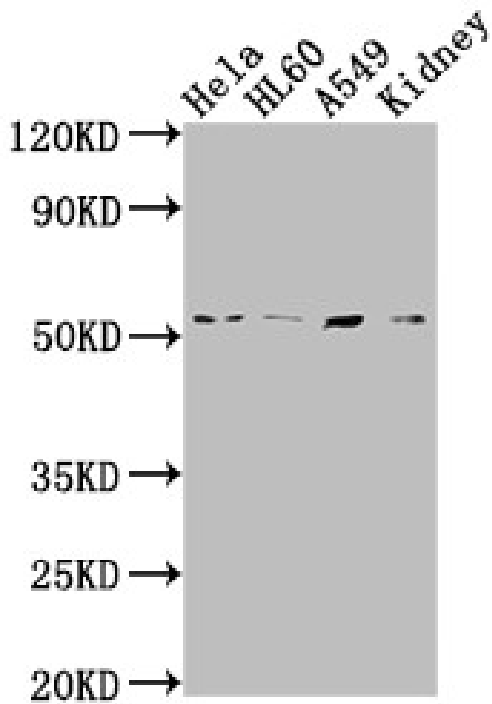


# ILK Recombinant Rabbit Monoclonal Antibody (6A5)

Product Details	
Size	100 µL
Species Reactivity	Human, Mouse
Host/Isotype	Rabbit / IgG
Expression system	HEK293 cells
Class	Recombinant Monoclonal
Type	Antibody
Clone	6A5
Conjugate	Unconjugated
Immunogen	A synthesized peptide derived from human ILK
Form	Liquid
Concentration	0.4 mg/mL
Purification	Affinity chromatography
Storage buffer	PBS, pH 7.4, with 50% glycerol
Contains	0.02% sodium azide
Storage conditions	-20°C or -80°C if preferred

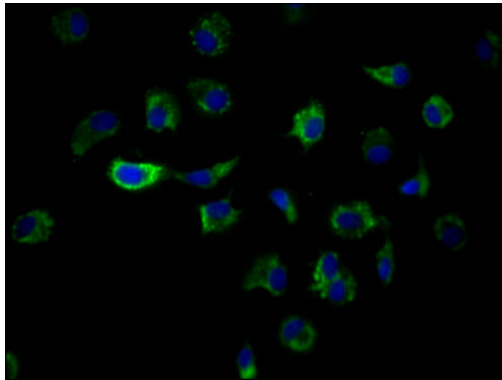
Applications	Tested Dilution	Publications
Western Blot (WB)	1:500-1:5,000	-
Immunocytochemistry (ICC/IF)	1:20-1:200	-
ELISA (ELISA)	Assay-dependent	-
Immunoprecipitation (IP)	1:200-1:1,000	-

## Product Images For ILK Recombinant Rabbit Monoclonal Antibody (6A5)



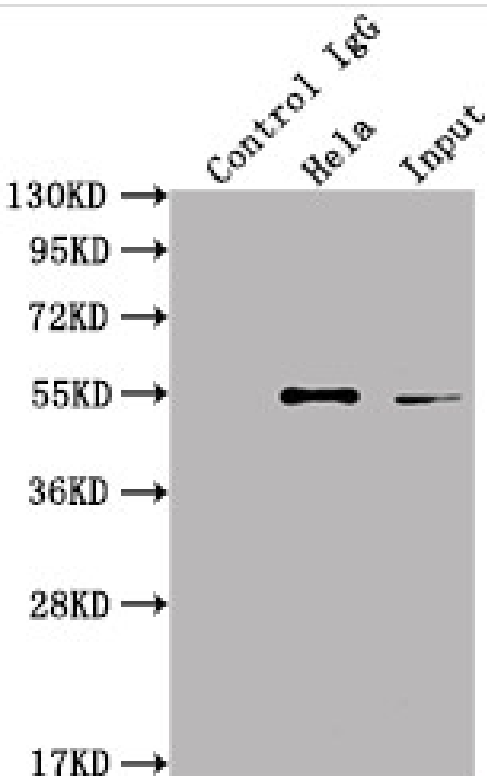
#### ILK Antibody (MA5-49818) in WB

Western blot analysis of ILK in HeLa whole cell lysate, HL60 whole cell lysate, A549 whole cell lysate, Mouse kidney tissue using a dilution of 1:2,000. Samples were incubated with ILK monoclonal antibody (Product # MA5-49818). Secondary: Goat polyclonal to rabbit IgG at 1:50,000 dilution. Predicted band size: 52, 45, 37 kDa. Observed band size: 51 kDa.



#### ILK Antibody (MA5-49818) in ICC/IF

Immunocytochemistry analysis of MCF7 cells with ILK monoclonal antibody (Product # MA5-49818) at 1:50, counter-stained with DAPI. The cells were fixed in 4% formaldehyde and blocked in 10% normal Goat Serum. The cells were then incubated with the antibody overnight at 4°C. Nuclear DNA was labeled in blue with DAPI. The secondary antibody was FITC-conjugated AffiniPure Goat Anti-Rabbit IgG (H+L).



#### ILK Antibody (MA5-49818) in IP

Immunoprecipitation analysis of ILK in HeLa whole cell lysate; Lane 1: Rabbit control IgG. Samples were incubated with ILK monoclonal antibody (Product # MA5-49818).

For Research Use Only. Not for use in diagnostic procedures. Not for resale without express authorization. Products are warranted to operate or perform substantially in conformance with published Product specifications in effect at the time of sale, as set forth in the Production documentation, specifications and/or accompanying package inserts ("Documentation"). No claim of suitability for use in applications regulated by FDA is made. The warranty provided herein is valid only when used by properly trained individuals. Unless otherwise stated in the Documentation, this warranty is limited to one year from date of shipment when the Product is subjected to normal, proper and intended usage. This warranty does not extend to anyone other than the Buyer. Any model or sample furnished to Buyer is merely illustrative of the general type and quality of goods and does not represent that any Product will conform to such model or sample. NO OTHER WARRANTIES, EXPRESS OR IMPLIED, ARE GRANTED INCLUDING WITHOUT LIMITATION, IMPLIED WARRANTIES OF MERCHANTABILITY, FITNESS FOR ANY PARTICULAR PURPOSE, OR NON INFRINGEMENT. BUYER'S EXCLUSIVE REMEDY FOR NON-CONFORMING PRODUCTS DURING THE WARRANTY PERIOD IS LIMITED TO REPAIR, REPLACEMENT OF OR REFUND FOR THE NON-CONFORMING PRODUCT(S) AT SELLER'S SOLE OPTION. THERE IS NO OBLIGATION TO REPAIR, REPLACE OR REFUND FOR PRODUCTS AS THE RESULT OF (I) ACCIDENT, DISASTER OR EVENT OF FORCE MAJEURE, (II) MISUSE, FAULT OR NEGLIGENCE OF OR BY BUYER, (III) USE OF THE PRODUCTS IN A MANNER FOR WHICH THEY WERE NOT DESIGNED, OR (IV) IMPROPER STORAGE AND HANDLING OF THE PRODUCTS. Unless otherwise expressly stated on the Product or in the documentation accompanying the Product, the Product is intended for research only and is not to be used for any other purpose, including without limitation, unauthorized commercial uses, in vitro diagnostic uses, ex vivo or in vivo therapeutic uses, or any type of consumption by or application to human or animals.