

Estrogen Receptor beta Polyclonal Antibody

Product Details

Size	50 µg
Species Reactivity	Human, Mouse, Non-human primate, Sheep, Rat
Published Species	Rat, Pig, Non-human primate, Bovine, Hamster, Sheep, Human, Mouse
Host/Isotype	Rabbit / IgG
Class	Polyclonal
Type	Antibody
Conjugate	Unconjugated
Immunogen	Synthetic peptide corresponding to residues A(55) E P Q K S P W C E A R S L E H(70) of rat ER beta.
Form	Liquid
Concentration	1 mg/mL
Purification	Antigen affinity chromatography
Storage buffer	PBS with 1mg/mL BSA
Contains	0.05% sodium azide
Storage conditions	-20° C, Avoid Freeze/Thaw Cycles
RRID	AB_325597

Applications	Tested Dilution	Publications
Western Blot (WB)	1 µg/mL	33 Publications
Immunohistochemistry (IHC)	-	36 Publications
Immunohistochemistry (Paraffin) (IHC (P))	1 µg/mL	2 Publications
Immunohistochemistry (Frozen) (IHC (F))	1 µg/mL	-
Immunocytochemistry (ICC/IF)	1 µg/mL	11 Publications
Flow Cytometry (Flow)	-	1 Publication
Immunoprecipitation (IP)	-	1 Publication
ChIP assay (ChIP)	-	6 Publications
Gel Shift (GS)	1 µg/mL	1 Publication
Miscellaneous PubMed (Misc)	-	1 Publication

Product Specific Information

PA1-311 detects estrogen receptor (ER) beta from human, non-human primate, mouse, ovine and rat tissues.

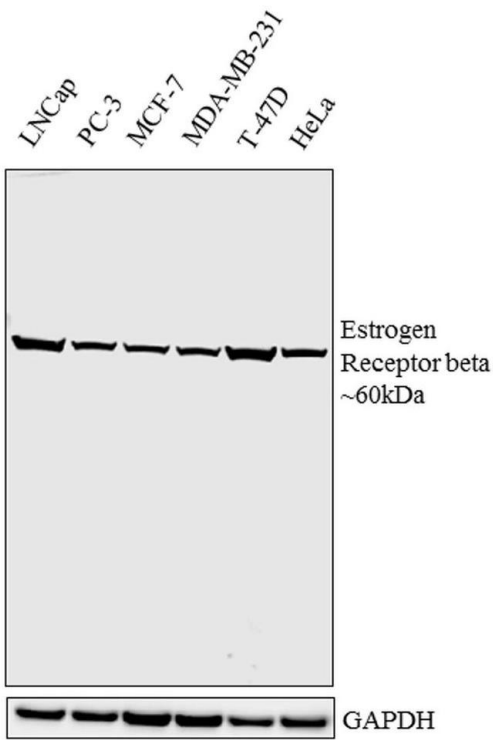
PA1-311 has been successfully used in Western blot, immunocytochemistry and gel shift procedures. By Western blot, this antibody detects an ~55-62 kDa protein representing ER beta from rat brain homogenate. PA1-311 efficiently supershifts rat ER beta/ER response element (vitellogenin xenopus A2 gene).

The PA1-311 immunogen is a synthetic peptide corresponding to residues A(55) E P Q K S P W C E A R S L E H(70) of rat ER beta.

Recombinant ER beta expressed in baculovirus system (Cat. # RP-311 and RP-312) can be purchased for control experiments in Western blot and gel shift assays.

PA1-311 can be used with blocking peptide PEP-011.

Product Images For Estrogen Receptor beta Polyclonal Antibody



Estrogen Receptor beta Antibody (PA1-311) in WB

Western blot analysis was performed on nuclear enriched extracts (30 µg lysate) of LNCap (Lane 1), PC-3 (Lane 2), MCF-7 (Lane 3), MDA-MB-231 (Lane 4), T-47D (Lane 5) and HeLa (Lane 6). The blots were probed with Anti-Rabbit Polyclonal Antibody (Product # PA1-311, 1 µg/mL) and detected by chemiluminescence using Goat anti-Rabbit IgG (Heavy Chain) Superclonal™ Secondary Antibody, HRP conjugate (Product # A27036, 0.4 µg/mL, 1:2500 dilution). A 60 kDa band corresponding to Estrogen Receptor beta was observed across the cell lines tested. Known quantity of protein samples were electrophoresed using Novex® NuPAGE® 10 % Bis-Tris gel (Product # NP0321BOX), XCell SureLock™ Electrophoresis System (Product # EI0002) and Novex® Sharp Pre-Stained Protein Standard (Product # LC5800). Resolved proteins were then transferred onto a nitrocellulose membrane with iBlot® 2 Dry Blotting System (Product # IB21001). The membrane was probed with the relevant primary and secondary Antibody following blocking with 5 % skimmed milk. Chemiluminescent detection was performed using Pierce™ ECL Western Blotting Substrate (Product # 32106).

View more figures on thermofisher.com

Western Blot (33)

<p>The Journal of biological chemistry</p> <p>Divergent roles of estrogen receptor subtypes in regulating estrogen-modulated colonic ion transports and epithelial repair.</p> <p>"Published figure using Estrogen Receptor beta polyclonal antibody (Product # PA1-311) in Western Blot"</p> <p>Authors: Wan H,Li J,Chen X,Sellers ZM,Dong H</p>	<p>Year</p> <p>2023</p>
<p>Cell reports</p> <p>AKTIP loss is enriched in ER-positive breast cancer for tumorigenesis and confers endocrine resistance.</p> <p>"PA1-311 was used in Western Blotting to highlight the subtype-specific functional consequences of AKTIP loss and provide a mechanistic explanation for the enriched AKTIP copy-number loss in ER-positive breast cancer."</p> <p>Authors: Ng ASN,Zhang S,Mak VCY,Zhou Y,Yuen Y,Sharma R,Lu Y,Zhuang G,Zhao W,Pang HH,Cheung LWT</p>	<p>Year</p> <p>2022</p> <p>Species</p> <p>Human</p>
<p>View more WB references on thermofisher.com</p>	

Immunohistochemistry (36)

<p>Journal of neuroinflammation</p> <p>Supraphysiologic doses of 17-estradiol aggravate depression-like behaviors in ovariectomized mice possibly via regulating microglial responses and brain glycerophospholipid metabolism.</p> <p>"PA1-311 was used in Immunohistochemistry-immunofluorescence to suggest that sE2 may be nonhelpful or even detrimental to menopause-related depression, at least partly, by regulating microglial responses and glycerophospholipid metabolism."</p> <p>Authors: Li M,Zhang J,Chen W,Liu S,Liu X,Ning Y,Cao Y,Zhao Y</p>	<p>Year</p> <p>2023</p> <p>Species</p> <p>Mouse</p> <p>Dilution</p> <p>1:150</p>
<p>NPJ breast cancer</p> <p>Inhibition of CXorf56 promotes PARP inhibitor-induced cytotoxicity in triple-negative breast cancer.</p> <p>"PA1-311 was used in Immunohistochemistry to indicate that treatment designed to inhibit CXorf56 protein in TNBC combined with PARPis may overcome drug resistance and expand the application of PARPis to patients with non-BRCA mutation."</p> <p>Authors: Zhu Y,Liu Z,Gui L,Yun W,Mao C,Deng R,Yao Y,Yu Q,Feng J,Ma H,Bao W</p>	<p>Year</p> <p>2023</p> <p>Species</p> <p>Human</p> <p>Dilution</p> <p>1:500</p>
<p>View more IHC references on thermofisher.com</p>	

More applications with references on thermofisher.com

- IHC (P) (2)
- ICC/IF (11)
- Flow (1)
- IP (1)
- ChIP (6)
- GS (1)
- Misc (1)

For Research Use Only. Not for use in diagnostic procedures. Not for resale without express authorization. Products are warranted to operate or perform substantially in conformance with published Product specifications in effect at the time of sale, as set forth in the Production documentation, specifications and/or accompanying package inserts ("Documentation"). No claim of suitability for use in applications regulated by FDA is made. The warranty provided herein is valid only when used by properly trained individuals. Unless otherwise stated in the Documentation, this warranty is limited to one year from date of shipment when the Product is subjected to normal, proper and intended usage. This warranty does not extend to anyone other than the Buyer. Any model or sample furnished to Buyer is merely illustrative of the general type and quality of goods and does not represent that any Product will conform to such model or sample. NO OTHER WARRANTIES, EXPRESS OR IMPLIED, ARE GRANTED INCLUDING WITHOUT LIMITATION, IMPLIED WARRANTIES OF MERCHANTABILITY, FITNESS FOR ANY PARTICULAR PURPOSE, OR NON-INFRINGEMENT. BUYER'S EXCLUSIVE REMEDY FOR NON-CONFORMING PRODUCTS DURING THE WARRANTY PERIOD IS LIMITED TO REPAIR, REPLACEMENT OF OR REFUND FOR THE NON-CONFORMING PRODUCT(S) AT SELLER'S SOLE OPTION. THERE IS NO OBLIGATION TO REPAIR, REPLACE OR REFUND FOR PRODUCTS AS THE RESULT OF (i) ACCIDENT, DISASTER OR EVENT OF FORCE MAJEURE, (ii) MISUSE, FAULT OR NEGLIGENCE OF OR BY BUYER, (iii) USE OF THE PRODUCTS IN A MANNER FOR WHICH THEY WERE NOT DESIGNED, OR (iv) IMPROPER STORAGE AND HANDLING OF THE PRODUCTS. Unless otherwise expressly stated on the Product or in the documentation accompanying the Product, the Product is intended for research only and is not to be used for any other purpose, including without limitation, unauthorized commercial uses, in vitro diagnostic uses, ex vivo or in vivo therapeutic uses, or any type of consumption by or application to human or animals.