

beta Tubulin Polyclonal Antibody

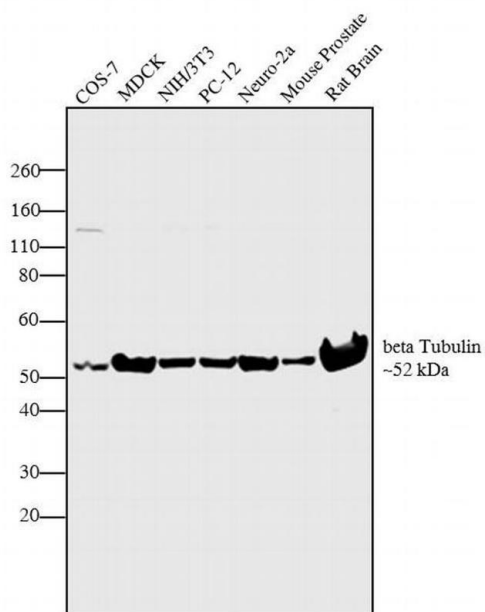
| Product Details | |
|--------------------|---|
| Size | 100 µg |
| Species Reactivity | Bovine, Dog, Chicken, Cat, Human, Mouse, Non-human primate, Rat, Xenopus |
| Published Species | Rat, Mouse, Human |
| Host/Isotype | Rabbit / IgG |
| Class | Polyclonal |
| Type | Antibody |
| Conjugate | Unconjugated |
| Immunogen | A synthetic peptide corresponding to a portion of amino acids 400-450 of human b-tubulin was used as immunogen for this antibody. |
| Form | Liquid |
| Concentration | 1 mg/mL |
| Purification | Protein G |
| Storage buffer | PBS |
| Contains | 0.05% sodium azide |
| Storage conditions | Store at 4°C short term. For long term storage, store at -20°C, avoiding freeze/thaw cycles. |
| RRID | AB_2210397 |

| Applications | Tested Dilution | Publications |
|---|-----------------|----------------|
| Western Blot (WB) | 0.1-1 µg/mL | 9 Publications |
| Immunohistochemistry (IHC) | - | 1 Publication |
| Immunohistochemistry (Paraffin) (IHC (P)) | 5-10 µg/mL | - |
| Immunocytochemistry (ICC/IF) | 2 µg/mL | 3 Publications |

Product Specific Information

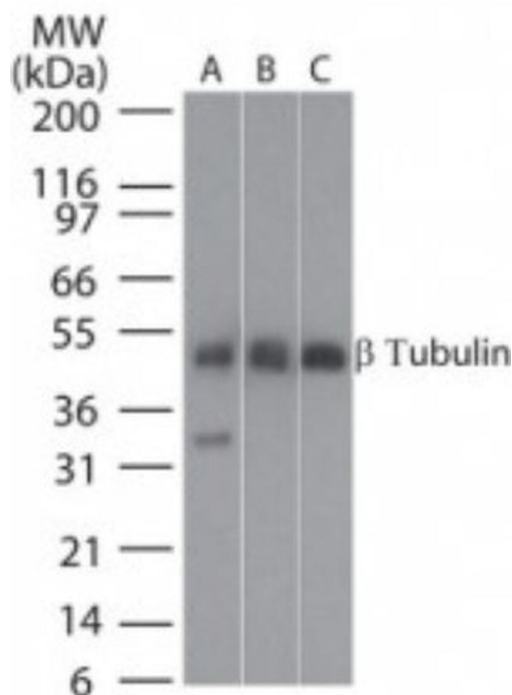
Suggested positive control: antigen standard for TUBB2A (transient overexpression lysate), human brain protein.

Product Images For beta Tubulin Polyclonal Antibody



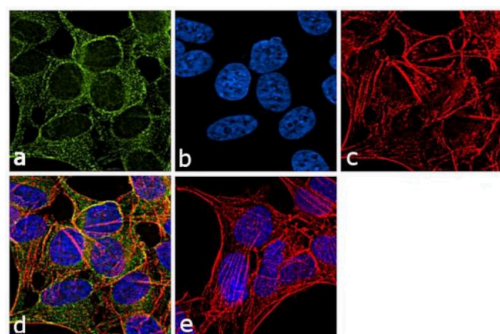
beta Tubulin Antibody (PA1-41331) in WB

Western blot analysis was performed on whole cell extracts (30 µg lysate) of COS-7 (Lane 1), MDCK (Lane 2), NIH/3T3 (Lane 3), PC-12 (Lane 4), Neuro-2a (Lane 5), tissue extracts of Mouse Prostate (Lane 6) and Rat Brain (Lane 7). The blot was probed with Anti-beta Tubulin Rabbit Polyclonal Antibody (Product # PA1-41331, 1 µg/mL) and detected by chemiluminescence using Goat anti-Rabbit IgG (Heavy Chain) Superclonal™ Secondary Antibody, HRP conjugate (Product # A27036, 0.25 µg/mL, 1:4000 dilution). A 52 kDa band corresponding to beta Tubulin was observed across the cell lines and tissues tested. Known quantity of protein samples were electrophoresed using Novex® NuPAGE® 4-12 % Bis-Tris gel (Product # NP0322BOX), XCell SureLock™ Electrophoresis System (Product # EI0002) and Novex® Sharp Pre-Stained Protein Standard (Product # LC5800). Resolved proteins were then transferred onto a nitrocellulose membrane with iBlot® 2 Dry Blotting System (Product # IB21001). The membrane was probed with the relevant primary and secondary Antibody following blocking with 5 % skimmed milk. Chemiluminescent detection was performed using Pierce™ ECL Western Blotting Substrate (Product # 32106).



beta Tubulin Antibody (PA1-41331) in WB

Western blot analysis of beta Tubulin in A: human brain, B: mouse brain and C: rat brain tissue lysates. Samples were incubated in beta Tubulin polyclonal antibody (Product # PA1-41331) using a dilution of 25 µg/mL.



beta Tubulin Antibody (PA1-41331) in ICC/IF

Immunofluorescence analysis of beta Tubulin was performed using 70% confluent log phase SH-SY5Y cells. The cells were fixed with 4% paraformaldehyde for 10 minutes, permeabilized with 0.1% Triton™ X-100 for 10 minutes, and blocked with 1% BSA for 1 hour at room temperature. The cells were labeled with Beta Tubulin Rabbit Polyclonal Antibody (Product # PA1-41331) at 2 µg/mL in 0.1% BSA and incubated for 3 hours at room temperature and then labeled with Goat anti-Rabbit IgG (Heavy Chain) Superclonal™ Secondary Antibody, Alexa Fluor® 488 conjugate (Product # A27034) at a dilution of 1:2000 for 45 minutes at room temperature (Panel a: green). Nuclei (Panel b: blue) were stained with SlowFade® Gold Antifade Mountant with DAPI (Product # S36938). F-actin (Panel c: red) was stained with Rhodamine Phalloidin (Product # R415, 1:300). Panel d represents the merged image showing cytoplasmic localization. Panel e shows the no primary antibody control. The images were captured at 60X magnification.

View more figures on thermofisher.com

13 References

Western Blot (9)

| | |
|--|---|
| <p>PloS one</p> <p>PITX1 protein interacts with ZCCHC10 to regulate hTERT mRNA transcription.</p> <p>"PA1-41331 was used in Western Blotting to study the role of ZCCHC10-PITX1 in the regulation of hTERT transcription and tumour suppression."</p> <p>Authors: Ohira T,Kojima H,Kuroda Y,Aoki S,Inaoka D,Osaki M,Wanibuchi H,Okada F,Oshimura M,Kugoh H</p> | <p>Year 2020</p> <p>Species Human</p> <p>Dilution 1:5000</p> |
|--|---|

| | |
|---|---|
| <p>Nature chemical biology</p> <p>Molecular basis for receptor tyrosine kinase A-loop tyrosine transphosphorylation.</p> <p>"PA1-41331 was used in Western Blotting to study the mechanism by which receptor tyrosine kinase domains accomplish transphosphorylation of tyrosine even while being catalytically repressed."</p> <p>Authors: Chen L,Marsiglia WM,Chen H,Katigbak J,Erdjument-Bromage H,Kemble DJ,Fu L,Ma J,Sun G,Zhang Y,Liang G,Neubert TA,Li X,Traaseth NJ,Mohammadi M</p> | <p>Year 2020</p> <p>Species Rat</p> |
|---|---|

View more WB references on thermofisher.com

Immunohistochemistry (1)

| | |
|--|-----------------------------|
| <p>SpringerPlus</p> <p>Neural stem/progenitor cells react to non-glial cns neoplasms.</p> <p>"Published figure using beta Tubulin polyclonal antibody (Product # PA1-41331) in Immunohistochemistry"</p> <p>Authors: Campbell JG,Miller DC,Cundiff DD,Feng Q,Litofsky NS</p> | <p>Year 2015</p> |
|--|-----------------------------|

Immunocytochemistry (3)

| | |
|---|---|
| <p>Scientific reports</p> <p>Photodynamic exposure of Rose-Bengal inhibits Tau aggregation and modulates cytoskeletal network in neuronal cells.</p> <p>"PA1-41331 was used in Immunocytochemistry-immunoflourescence to study the protective role of Rose Bengal against Tau aggregation and cytoskeleton modulations."</p> <p>Authors: Dubey T,Gorantla NV,Chandrashekara KT,Chinnathambi S</p> | <p>Year 2020</p> <p>Species Mouse</p> |
|---|---|

View more ICC/IF references on thermofisher.com

More applications with references on thermofisher.com

For Research Use Only. Not for use in diagnostic procedures. Not for resale without express authorization. Products are warranted to operate or perform substantially in conformance with published Product specifications in effect at the time of sale, as set forth in the Production documentation, specifications and/or accompanying package inserts ("Documentation"). No claim of suitability for use in applications regulated by FDA is made. The warranty provided herein is valid only when used by properly trained individuals. Unless otherwise stated in the Documentation, this warranty is limited to one year from date of shipment when the Product is subjected to normal, proper and intended usage. This warranty does not extend to anyone other than the Buyer. Any model or sample furnished to Buyer is merely illustrative of the general type and quality of goods and does not represent that any Product will conform to such model or sample. NO OTHER WARRANTIES, EXPRESS OR IMPLIED, ARE GRANTED INCLUDING WITHOUT LIMITATION, IMPLIED WARRANTIES OF MERCHANTABILITY, FITNESS FOR ANY PARTICULAR PURPOSE, OR NON INFRINGEMENT. BUYER'S EXCLUSIVE REMEDY FOR NON-CONFORMING PRODUCTS DURING THE WARRANTY PERIOD IS LIMITED TO REPAIR, REPLACEMENT OF OR REFUND FOR THE NON-CONFORMING PRODUCT(S) AT SELLER'S SOLE OPTION. THERE IS NO OBLIGATION TO REPAIR, REPLACE OR REFUND FOR PRODUCTS AS THE RESULT OF (I) ACCIDENT, DISASTER OR EVENT OF FORCE MAJEURE, (II) MISUSE, FAULT OR NEGLIGENCE OF OR BY BUYER, (III) USE OF THE PRODUCTS IN A MANNER FOR WHICH THEY WERE NOT DESIGNED, OR (IV) IMPROPER STORAGE AND HANDLING OF THE PRODUCTS. Unless otherwise expressly stated on the Product or in the documentation accompanying the Product, the Product is intended for research only and is not to be used for any other purpose, including without limitation, unauthorized commercial uses, in vitro diagnostic uses, ex vivo or in vivo therapeutic uses, or any type of consumption by or application to human or animals.