

RAB3A Polyclonal Antibody

Product Details

Size	100 µg
Species Reactivity	Dog, Hamster, Human, Mouse, Rat
Published Species	Rat, Human
Host/Isotype	Rabbit / IgG
Class	Polyclonal
Type	Antibody
Conjugate	Unconjugated
Immunogen	Synthetic peptide corresponding to residues M(1) A S A T D S R Y G Q K E S S D Q N(18) C of human RAB3A.
Form	Liquid
Concentration	1 mg/mL
Purification	Affinity chromatography
Storage buffer	1mg/mL BSA
Contains	0.05% sodium azide
Storage conditions	-20° C, Avoid Freeze/Thaw Cycles
RRID	AB_2177381

Applications	Tested Dilution	Publications
Western Blot (WB)	1:500-1:1,000	1 Publication
Immunohistochemistry (IHC)	-	1 Publication
Immunocytochemistry (ICC/IF)	1:100-1:500	-
Immunoprecipitation (IP)	Assay-dependent	-

Product Specific Information

PA1-770 detects rab 3A from canine, hamster, human, mouse and rat tissues and cells.

PA1-770 has been successfully used in Western blot and immunoprecipitation procedures. By Western blot, this antibody detects an ~21 kDa protein representing rab 3A from Hepa1 cell lysate.

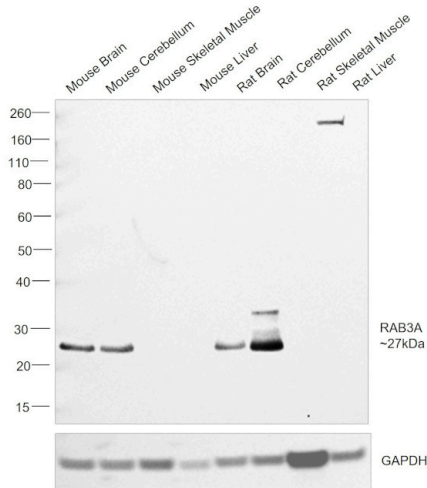
PA1-770 immunogen is a synthetic peptide corresponding to residues M(1) A S A T D S R Y G Q K E S S D Q N(18) C of human RAB3A. This sequence is completely conserved between human, mouse, and rat rab 3A. PA1-770 immunizing peptide (Cat. # PEP-098) is available for use in neutralization and control experiments.

Recombinant human rab 3A (Cat # RP-770) protein can be purchased for control experiments in Western blot applications.

Product Images For RAB3A Polyclonal Antibody

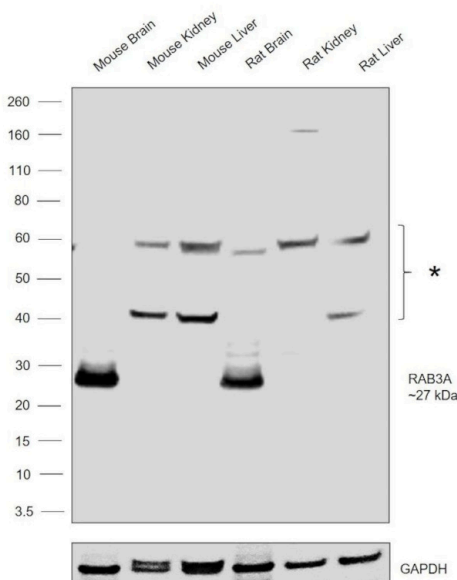
RAB3A Antibody (PA1-770) in WB

Western blot was performed using RAB3A Polyclonal Antibody (Product # PA1-770) and a 27 kDa band corresponding to RAB3A was observed in Mouse brain, Mouse cerebellum, Rat brain and Rat cerebellum but not in Mouse skeletal muscle, Mouse liver, Rat skeletal muscle and Rat liver. Tissue extract (30 µg lysate) of Mouse brain (Lane 1), Mouse cerebellum (Lane 2), Mouse skeletal muscle (Lane 3), Mouse liver (Lane 4), Rat brain (Lane 5), Rat cerebellum (Lane 6), Rat skeletal muscle (Lane 7) and Rat liver (Lane 8) were electrophoresed using NuPAGE™ 4-12% Bis-Tris Protein Gel (Product # NP0321BOX). Resolved proteins were then transferred onto a nitrocellulose membrane (Product # IB23002) by iBlot® 2 Gel Transfer Device (Product # IB21001). The blot was probed with the primary antibody (1:2000 dilution) and detected by chemiluminescence with Goat anti-Rabbit IgG (Heavy Chain) Superclonal™ Recombinant Secondary Antibody, HRP (Product # A27036, 1:20,000 dilution) using the iBright™ FL1500 Imaging System (Product # A44115). Chemiluminescent detection was performed using SuperSignal™ West Pico PLUS Chemiluminescent Substrate (Product # 34580).



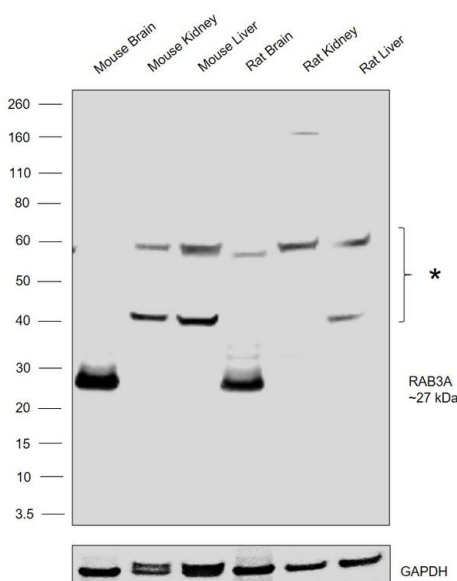
RAB3A Antibody (PA1-770)

Antibody specificity was demonstrated by detection of differential basal expression of the target across tissues owing to their inherent genetic constitution. Relative expression of RAB3A was observed in Mouse Brain and Rat Brain in comparison to Mouse Kidney, Mouse Liver, Rat Kidney and Rat Liver using Anti-RAB3A Polyclonal Antibody (Product # PA1-770) in Western Blot. {RE}



RAB3A Antibody (PA1-770) in WB

Western blot was performed using Anti-RAB3A Polyclonal Antibody (Product # PA1-770) and a 27 kDa band corresponding to RAB3A was observed along with two uncharacterized band (*) at ~40 kD and 60 kDa across tissues tested. Tissue extract (30 µg lysate) of Mouse Brain (Lane 1), Mouse Kidney (Lane 2), Mouse Liver (Lane 3), Rat Brain (Lane 4), Rat Kidney (Lane 5), Rat Liver (Lane 6), were electrophoresed using NuPAGE™ 4-12% Bis-Tris Protein Gel (Product # NP0321BOX). Resolved proteins were then transferred onto a Nitrocellulose membrane (Product # LC2001) by iBlot® 2 Dry Blotting System (Product # IB21001). The blot was probed with the primary antibody (2 µg/mL) and detected by chemiluminescence with Rabbit anti-Goat IgG Heavy Chain Superclonal™ Recombinant Secondary Antibody, HRP (Product # A27014, 1:4000 dilution) using the iBright FL 1000 (Product # A32752). Chemiluminescent detection was performed using Novex® ECL Chemiluminescent Substrate Reagent Kit (Product # WP20005).



2 References

Western Blot (1)

<p>eLife</p> <p>Systematic proteomic analysis of LRRK2-mediated Rab GTPase phosphorylation establishes a connection to ciliogenesis.</p> <p>"PA1-770 was used in Western Blotting to assess the LRRK2-mediated phosphorylation of the Rab GTPase family to establish a connection to primary ciliogenesis."</p> <p>Authors: Steger M,Diez F,Dhekne HS,Lis P,Nirujogi RS,Karayel O,Tonelli F,Martinez TN,Lorentzen E,Pfeffer SR,Alessi DR,Mann M</p>	<p>Year 2017</p> <p>Species Human</p>
------------------------------------------------------------------------------------------------------------------------------------------------------------------------------------------------------------------------------------------------------------------------------------------------------------------------------------------------------------------------------------------------------------------------------------------------------------	-------------------------------------------------------------

Immunohistochemistry (1)

<p>European journal of histochemistry : EJH</p> <p>Secreted key regulators (Fgf1, Bmp4, Gdf3) are expressed by PAC1-immunopositive retinal ganglion cells in the postnatal rat retina.</p> <p>"PA1-770 was used in Immunohistochemistry to show that these proteins could regulate postnatal RGC development acting through intracrine pathways."</p> <p>Authors: Dénes V,Kovacs K,Lukáts Á,Mester A,Berta G,Szabó A,Gabriel R</p>	<p>Year 2022</p> <p>Species Rat</p> <p>Dilution 1:1000</p>
-------------------------------------------------------------------------------------------------------------------------------------------------------------------------------------------------------------------------------------------------------------------------------------------------------------------------------------------------------------------------------------------------------------------------------------------	---------------------------------------------------------------------------------------------

For Research Use Only. Not for use in diagnostic procedures. Not for resale without express authorization. Products are warranted to operate or perform substantially in conformance with published Product specifications in effect at the time of sale, as set forth in the Production documentation, specifications and/or accompanying package inserts ("Documentation"). No claim of suitability for use in applications regulated by FDA is made. The warranty provided herein is valid only when used by properly trained individuals. Unless otherwise stated in the Documentation, this warranty is limited to one year from date of shipment when the Product is subjected to normal, proper and intended usage. This warranty does not extend to anyone other than the Buyer. Any model or sample furnished to Buyer is merely illustrative of the general type and quality of goods and does not represent that any Product will conform to such model or sample. NO OTHER WARRANTIES, EXPRESS OR IMPLIED, ARE GRANTED INCLUDING WITHOUT LIMITATION, IMPLIED WARRANTIES OF MERCHANTABILITY, FITNESS FOR ANY PARTICULAR PURPOSE, OR NON INFRINGEMENT. BUYER'S EXCLUSIVE REMEDY FOR NON-CONFORMING PRODUCTS DURING THE WARRANTY PERIOD IS LIMITED TO REPAIR, REPLACEMENT OF OR REFUND FOR THE NON-CONFORMING PRODUCT(S) AT SELLER'S SOLE OPTION. THERE IS NO OBLIGATION TO REPAIR, REPLACE OR REFUND FOR PRODUCTS AS THE RESULT OF (i) ACCIDENT, DISASTER OR EVENT OF FORCE MAJEURE, (ii) MISUSE, FAULT OR NEGLIGENCE OF OR BY BUYER, (iii) USE OF THE PRODUCTS IN A MANNER FOR WHICH THEY WERE NOT DESIGNED, OR (iv) IMPROPER STORAGE AND HANDLING OF THE PRODUCTS. Unless otherwise expressly stated on the Product or in the documentation accompanying the Product, the Product is intended for research only and is not to be used for any other purpose, including without limitation, unauthorized commercial uses, in vitro diagnostic uses, ex vivo or in vivo therapeutic uses, or any type of consumption by or application to human or animals.