

# Bcl-B Polyclonal Antibody

Product Details	
Size	100 µL
Species Reactivity	Human
Host/Isotype	Rabbit / IgG
Class	Polyclonal
Type	Antibody
Conjugate	Unconjugated
Immunogen	Synthetic peptide corresponding to a region within amino acids 60 and 153 of BCL2L10 (Uniprot ID#Q9HD36)
Form	Liquid
Concentration	1.32 mg/mL
Purification	Antigen affinity chromatography
Storage buffer	PBS, pH 7, with 20% glycerol
Contains	0.025% ProClin 300
Storage conditions	Store at 4°C short term. For long term storage, store at -20°C, avoiding freeze/thaw cycles.
RRID	AB_11155374

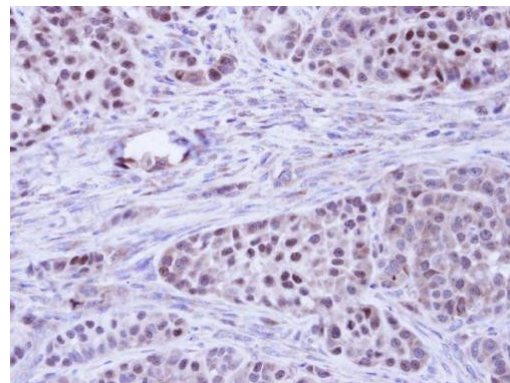
Applications	Tested Dilution	Publications
Western Blot (WB)	1:500-1:3,000	1 Publication
Immunohistochemistry (IHC)	-	1 Publication
Immunohistochemistry (Paraffin) (IHC (P))	1:100-1:1,000	-
Immunocytochemistry (ICC/IF)	1:100-1:1,000	-

## Product Specific Information

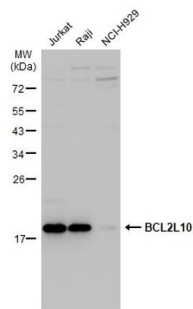
Recommended positive controls: Jurkat, Raji, NCI-H929.

Store product as a concentrated solution. Centrifuge briefly prior to opening the vial.

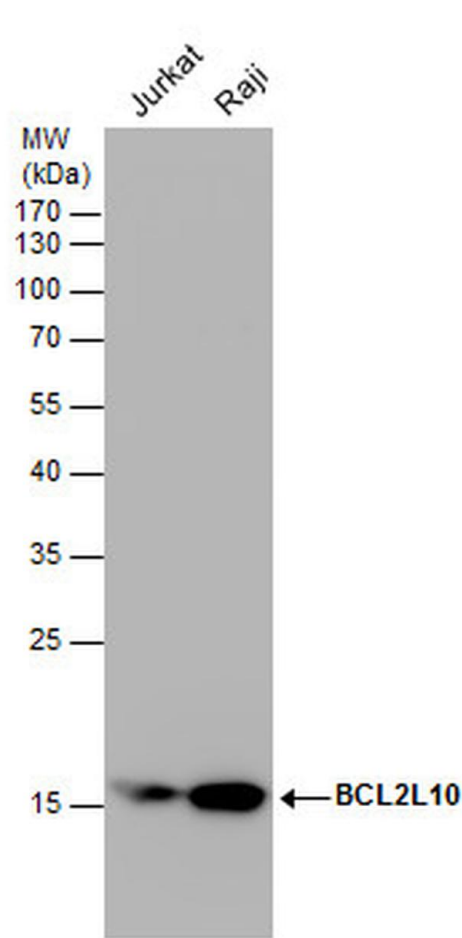
Product Images For Bcl-B Polyclonal Antibody



**Bcl-B Antibody (PA5-22190) in IHC (P)**  
Immunohistochemical analysis of paraffin-embedded A549 Xenograft, using BCL2L10 (Product # PA5-22190) antibody at 1:100 dilution. Antigen Retrieval: Citrate buffer, pH 6.0, 15 min.



**Bcl-B Antibody (PA5-22190) in WB**  
Western Blot using Bcl-B Polyclonal Antibody (Product # PA5-22190). Various whole cell extracts (30 µg) were separated by 12% SDS-PAGE, and the membrane was blotted with Bcl-B Polyclonal Antibody (Product # PA5-22190) diluted at 1:1,000. The HRP-conjugated anti-rabbit IgG antibody was used to detect the primary antibody.



**Bcl-B Antibody (PA5-22190) in WB**  
Western Blot analysis of Bcl-B was performed by separating 30 µg of various whole cell extracts by 12% SDS-PAGE. Proteins were transferred to a membrane and probed with a Bcl-B Polyclonal Antibody (Product # PA5-22190) at a dilution of 1:1,000.

View more figures on [thermofisher.com](https://thermofisher.com)

Western Blot (1)

Cancers	Year 2020
<b>BCL2L10 Is Overexpressed in Melanoma Downstream of STAT3 and Promotes Cisplatin and ABT-737 Resistance.</b>	
"Published figure using Bcl-B polyclonal antibody (Product # PA5-22190) in Immunohistochemistry"	
Authors: Quezada MJ,Picco ME,Villanueva MB,Castro MV,Barbero G,Fernández NB,Illescas E,Lopez-Bergami P	

Immunohistochemistry (1)

Cancers	Year 2020
<b>BCL2L10 Is Overexpressed in Melanoma Downstream of STAT3 and Promotes Cisplatin and ABT-737 Resistance.</b>	
"Published figure using Bcl-B polyclonal antibody (Product # PA5-22190) in Immunohistochemistry"	
Authors: Quezada MJ,Picco ME,Villanueva MB,Castro MV,Barbero G,Fernández NB,Illescas E,Lopez-Bergami P	

For Research Use Only. Not for use in diagnostic procedures. Not for resale without express authorization. Products are warranted to operate or perform substantially in conformance with published Product specifications in effect at the time of sale, as set forth in the Production documentation, specifications and/or accompanying package inserts ("Documentation"). No claim of suitability for use in applications regulated by FDA is made. The warranty provided herein is valid only when used by properly trained individuals. Unless otherwise stated in the Documentation, this warranty is limited to one year from date of shipment when the Product is subjected to normal, proper and intended usage. This warranty does not extend to anyone other than the Buyer. Any model or sample furnished to Buyer is merely illustrative of the general type and quality of goods and does not represent that any Product will conform to such model or sample. NO OTHER WARRANTIES, EXPRESS OR IMPLIED, ARE GRANTED INCLUDING WITHOUT LIMITATION, IMPLIED WARRANTIES OF MERCHANTABILITY, FITNESS FOR ANY PARTICULAR PURPOSE, OR NON INFRINGEMENT. BUYER'S EXCLUSIVE REMEDY FOR NON-CONFORMING PRODUCTS DURING THE WARRANTY PERIOD IS LIMITED TO REPAIR, REPLACEMENT OF OR REFUND FOR THE NON-CONFORMING PRODUCT(S) AT SELLER'S SOLE OPTION. THERE IS NO OBLIGATION TO REPAIR, REPLACE OR REFUND FOR PRODUCTS AS THE RESULT OF (I) ACCIDENT, DISASTER OR EVENT OF FORCE MAJEURE, (II) MISUSE, FAULT OR NEGLIGENCE OF OR BY BUYER, (III) USE OF THE PRODUCTS IN A MANNER FOR WHICH THEY WERE NOT DESIGNED, OR (IV) IMPROPER STORAGE AND HANDLING OF THE PRODUCTS. Unless otherwise expressly stated on the Product or in the documentation accompanying the Product, the Product is intended for research only and is not to be used for any other purpose, including without limitation, unauthorized commercial uses, in vitro diagnostic uses, ex vivo or in vivo therapeutic uses, or any type of consumption by or application to human or animals.