

IFITM3 Polyclonal Antibody

Product Details	
Size	100 µL
Species Reactivity	Human, Mouse
Published Species	Human
Host/Isotype	Rabbit / IgG
Class	Polyclonal
Type	Antibody
Conjugate	Unconjugated
Immunogen	Full length human IFITM3 Recombinant protein.
Form	Liquid
Concentration	0.74 mg/mL
Purification	Antigen affinity chromatography
Storage buffer	0.1M tris glycine, pH 7, with 20% glycerol
Contains	0.01% thimerosal
Storage conditions	Store at 4°C short term. For long term storage, store at -20°C, avoiding freeze/thaw cycles.
RRID	AB_2547856

Applications	Tested Dilution	Publications
Western Blot (WB)	1:500-1:3,000	-
Immunohistochemistry (Paraffin) (IHC (P))	1:100-1:1,000	-
Immunocytochemistry (ICC/IF)	1:100	-
Flow Cytometry (Flow)	-	1 Publication

Product Specific Information

Recommended positive controls: HeLa.

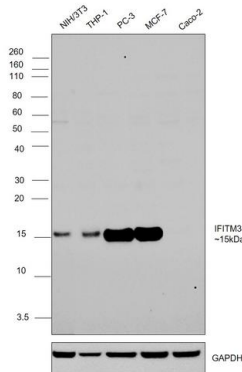
Predicted reactivity: Chimpanzee (99%).

Store product as a concentrated solution. Centrifuge briefly prior to opening the vial.

Product Images For IFITM3 Polyclonal Antibody

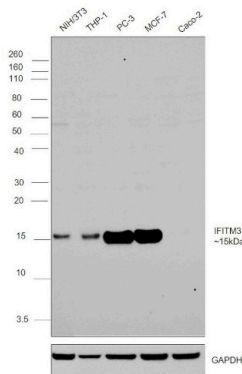
IFITM3 Antibody (PA5-30382) in WB

Western blot was performed using Anti- IFITM3 Polyclonal Antibody (Product # PA5-30382) and a 15 kDa band corresponding to IFITM3 was observed across the cell lines except in Caco-2. Whole cell extracts (30 µg lysate) of NIH/3T3 (Lane 1), THP-1 (Lane 2), PC-3 (Lane 3), MCF-7 (Lane 4) and Caco-2 (Lane 5) were electrophoresed using NuPAGE™ 12% Bis-Tris Protein Gel (Product # NP0341BOX). Resolved proteins were then transferred onto a nitrocellulose membrane (Product # IB23001) by iBlot® 2 Dry Blotting System (Product # IB21001). The blot was probed with the primary antibody (1:1,000 dilution) and detected by chemiluminescence with Goat anti- Rabbit IgG (Heavy Chain), Superclonal™ Recombinant Secondary Antibody, HRP (Product # A27036, 0.25 µg/mL, 1:4,000 dilution) using the iBright FL 1000 (Product # A32752). Chemiluminescent detection was performed using Novex® ECL Chemiluminescent Substrate Reagent Kit (Product # WP20005).



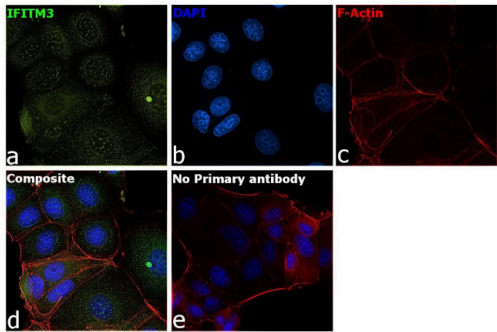
IFITM3 Antibody (PA5-30382)

Antibody specificity was demonstrated by detection of differential basal expression of the target across cell models owing to their inherent genetic constitution. Immunofluorescence analysis using Anti-IFITM3 Polyclonal Antibody (Product # PA5-30382) shows high expression of IFITM3 in NIH/3T3, THP-1, PC-3 and MCF7 cell line when compared to Caco-2 cell line. {RE}



IFITM3 Antibody (PA5-30382) in ICC/IF

Immunofluorescence analysis of IFITM3 was performed using 70% confluent log phase MCF7 cells. The cells were fixed with 4% paraformaldehyde for 10 minutes, permeabilized with 0.1% Triton™ X-100 for 15 minutes and blocked with 2% BSA for 1 hour at room temperature. The cells were labeled with IFITM3 Polyclonal Antibody (Product # PA5-30382) at 1:100 dilution in 0.1% BSA, incubated at 4 degree celsius overnight and then with Donkey anti-Rabbit IgG (H+L) Highly Cross-Adsorbed Secondary Antibody, Alexa Fluor Plus 488 (Product # A32790, 1:2000 dilution) for 45 minutes at room temperature (Panel a: green). Nuclei (Panel b: blue) were stained with SlowFade® Gold Antifade Mountant with DAPI (Product # S36938). F-actin (Panel c: red) was stained with Rhodamine Phalloidin (Product # R415, 1:300). Panel d represents the merged image showing membrane, lysosomal and endosomal localization. Panel e represents no primary antibody to assess background. The images were captured at 60X magnification.



View more figures on thermofisher.com

Flow Cytometry (1)

<p>The Journal of clinical investigation</p> <p>Monoclonal antibody targeting BDCA2 ameliorates skin lesions in systemic lupus erythematosus.</p> <p>"PA5-30382 was used in Flow cytometry/Cell sorting to validate the safety, tolerability and pharmacokinetic and pharmacodynamic effects of single BIIB059 doses in healthy volunteers and patients with systemic lupus erythematosus."</p> <p>Authors: Furie R,Werth VP,Merola JF,Stevenson L,Reynolds TL,Naik H,Wang W,Christmann R,Gardet A,Pellerin A,Hamann S,Auluck P,Barbey C,Gulati P,Rabah D,Franchimont N</p>	<p>Year 2019</p> <p>Species Human</p>
--	---

For Research Use Only. Not for use in diagnostic procedures. Not for resale without express authorization. Products are warranted to operate or perform substantially in conformance with published Product specifications in effect at the time of sale, as set forth in the Production documentation, specifications and/or accompanying package inserts ("Documentation"). No claim of suitability for use in applications regulated by FDA is made. The warranty provided herein is valid only when used by properly trained individuals. Unless otherwise stated in the Documentation, this warranty is limited to one year from date of shipment when the Product is subjected to normal, proper and intended usage. This warranty does not extend to anyone other than the Buyer. Any model or sample furnished to Buyer is merely illustrative of the general type and quality of goods and does not represent that any Product will conform to such model or sample. NO OTHER WARRANTIES, EXPRESS OR IMPLIED, ARE GRANTED INCLUDING WITHOUT LIMITATION, IMPLIED WARRANTIES OF MERCHANTABILITY, FITNESS FOR ANY PARTICULAR PURPOSE, OR NON INFRINGEMENT. BUYER'S EXCLUSIVE REMEDY FOR NON-CONFORMING PRODUCTS DURING THE WARRANTY PERIOD IS LIMITED TO REPAIR, REPLACEMENT OF OR REFUND FOR THE NON-CONFORMING PRODUCT(S) AT SELLER'S SOLE OPTION. THERE IS NO OBLIGATION TO REPAIR, REPLACE OR REFUND FOR PRODUCTS AS THE RESULT OF (I) ACCIDENT, DISASTER OR EVENT OF FORCE MAJEURE, (II) MISUSE, FAULT OR NEGLIGENCE OF OR BY BUYER, (III) USE OF THE PRODUCTS IN A MANNER FOR WHICH THEY WERE NOT DESIGNED, OR (IV) IMPROPER STORAGE AND HANDLING OF THE PRODUCTS. Unless otherwise expressly stated on the Product or in the documentation accompanying the Product, the Product is intended for research only and is not to be used for any other purpose, including without limitation, unauthorized commercial uses, in vitro diagnostic uses, ex vivo or in vivo therapeutic uses, or any type of consumption by or application to human or animals.