

CYP2E1 Polyclonal Antibody

Product Details	
Size	100 µL
Species Reactivity	Human, Mouse, Rat
Published Species	Rat
Host/Isotype	Rabbit / IgG
Class	Polyclonal
Type	Antibody
Conjugate	Unconjugated
Immunogen	Recombinant protein corresponding to Human CYP2E1
Form	Liquid
Concentration	0.08 mg/mL
Purification	Antigen affinity chromatography
Storage buffer	PBS, pH 7.2, with 40% glycerol
Contains	0.02% sodium azide
Storage conditions	Store at 4°C short term. For long term storage, store at -20°C, avoiding freeze/thaw cycles.
RRID	AB_2640324

Applications	Tested Dilution	Publications
Western Blot (WB)	0.04-0.4 µg/mL	1 Publication
Immunohistochemistry (IHC)	1:200-1:500	-

Product Specific Information

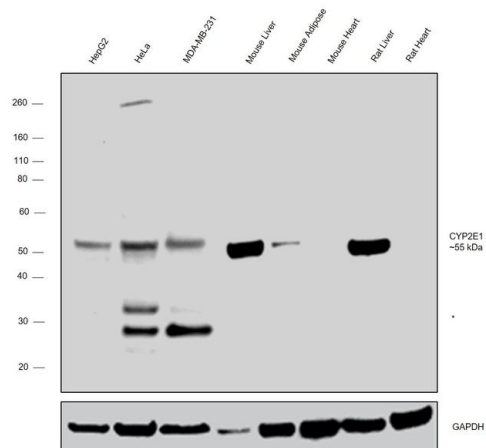
Immunogen sequence: EKLHEEIDRV IGPSRIPAik DRQEMPYMDA VVHEIQRFIT LVPSNLPHEA TRDTIFRGYL IPKGTVVVPT LDSVLYDNQE FPDPEKFKPE HFLNENGKFK YSDYFKPFST GKRVcAG

Highest antigen sequence identity to the following orthologs: Mouse - 86%, Rat - 86%.

Product Images For CYP2E1 Polyclonal Antibody

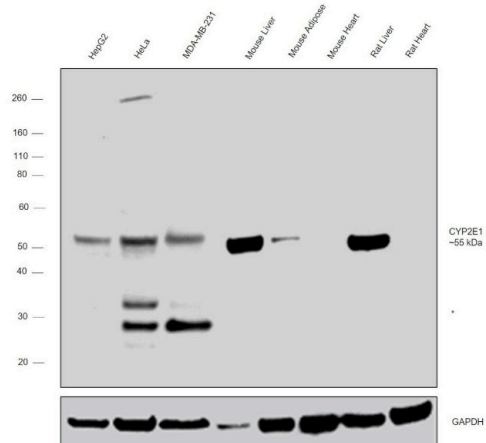
CYP2E1 Antibody (PA5-52652) in WB

Western blot was performed using anti-CYP2E1 Polyclonal Antibody (Product # PA5-52652) and an ~55 kDa band corresponding to CYP2E1 was observed across the cell lines and tissues tested. Few uncharacterized (*) bands were also observed in HeLa and MDA-MB-231 cells. Membrane enriched extracts (30 µg lysate) of Hep G2 (Lane 1), HeLa (Lane 2), MDA-MB-231 (Lane 3) and tissue extracts (30 µg lysate) of Mouse Liver (Lane 4), Mouse Adipose (Lane 5), Mouse Heart (Lane 6), Rat Liver (Lane 7) and Rat Heart (Lane 8) were electrophoresed using NuPAGE™ 4-12% Bis-Tris Protein Gel (Product # NP0321BOX). Resolved proteins were then transferred onto a nitrocellulose membrane (Product # IB23001) by iBlot® 2 Dry Blotting System (Product # IB21001). The blot was probed with the primary antibody (0.4 µg/mL) and detected by chemiluminescence with Goat anti-Rabbit IgG (H+L), Superclonal™ Recombinant Secondary Antibody, HRP (Product # A27036, 1:4000 dilution) using the iBright FL 1000 (Product # A32752). Chemiluminescent detection was performed using Novex® ECL Chemiluminescent Substrate Reagent Kit (Product # WP20005).

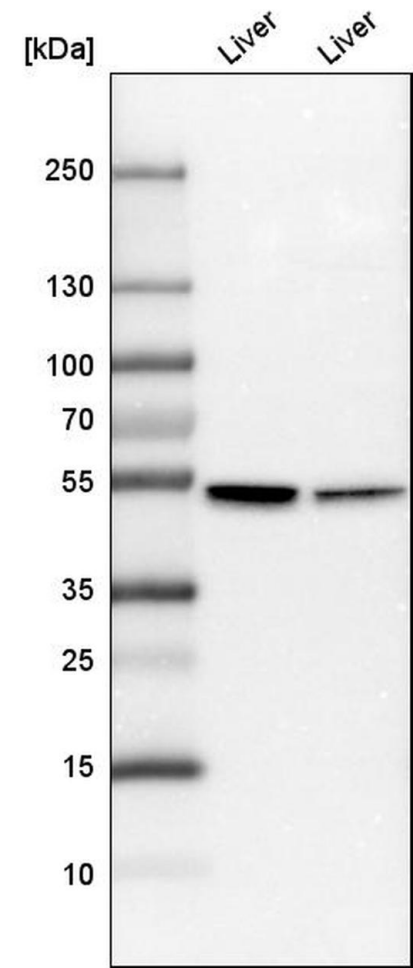


CYP2E1 Antibody (PA5-52652)

Antibody specificity was demonstrated by detection of differential basal expression of the target across tissues tested owing to their inherent genetic constitution. Relative expression of CYP2E1 was observed in Mouse Liver, Mouse Adipose and Rat Liver in comparison to Mouse Heart and Rat Heart using Anti- CYP2E1 Polyclonal antibody (Product # PA5-52652) in Western Blot. {RE}



CYP2E1 Antibody (PA5-52652) in WB
Western blot analysis of CYP2E1 in mouse liver tissue and rat liver tissue using a CYP2E1 Polyclonal Antibody (Product # PA5-52652).



[View more figures on thermofisher.com](#)

1 Reference

Western Blot (1)

Evidence-based complementary and alternative medicine : eCAM	Year 2022
Mechanical Study of Jian-Gan-Xiao-Zhi Decoction on Nonalcoholic Fatty Liver Disease Based on Integrated Network Pharmacology and Untargeted Metabolomics.	Species Rat
"PA5-52652 was used in Western Blotting to investigate the mechanisms by which Jian-Gan-Xiao-Zhi decoction improve nonalcoholic fatty liver disease."	Dilution 1:1000
Authors: Cao YJ,Li HZ,Zhao J,Sun YM,Jin XW,Lv SQ,Luo JY,Fang XX,Wen WB,Liao JB	

For Research Use Only. Not for use in diagnostic procedures. Not for resale without express authorization. Products are warranted to operate or perform substantially in conformance with published Product specifications in effect at the time of sale, as set forth in the Production documentation, specifications and/or accompanying package inserts ("Documentation"). No claim of suitability for use in applications regulated by FDA is made. The warranty provided herein is valid only when used by properly trained individuals. Unless otherwise stated in the Documentation, this warranty is limited to one year from date of shipment when the Product is subjected to normal, proper and intended usage. This warranty does not extend to anyone other than the Buyer. Any model or sample furnished to Buyer is merely illustrative of the general type and quality of goods and does not represent that any Product will conform to such model or sample. NO OTHER WARRANTIES, EXPRESS OR IMPLIED, ARE GRANTED INCLUDING WITHOUT LIMITATION, IMPLIED WARRANTIES OF MERCHANTABILITY, FITNESS FOR ANY PARTICULAR PURPOSE, OR NON INFRINGEMENT. BUYER'S EXCLUSIVE REMEDY FOR NON-CONFORMING PRODUCTS DURING THE WARRANTY PERIOD IS LIMITED TO REPAIR, REPLACEMENT OF OR REFUND FOR THE NON-CONFORMING PRODUCT(S) AT SELLER'S SOLE OPTION. THERE IS NO OBLIGATION TO REPAIR, REPLACE OR REFUND FOR PRODUCTS AS THE RESULT OF (i) ACCIDENT, DISASTER OR EVENT OF FORCE MAJEURE, (ii) MISUSE, FAULT OR NEGLIGENCE OF OR BY BUYER, (iii) USE OF THE PRODUCTS IN A MANNER FOR WHICH THEY WERE NOT DESIGNED, OR (iv) IMPROPER STORAGE AND HANDLING OF THE PRODUCTS. Unless otherwise expressly stated on the Product or in the documentation accompanying the Product, the Product is intended for research only and is not to be used for any other purpose, including without limitation, unauthorized commercial uses, in vitro diagnostic uses, ex vivo or in vivo therapeutic uses, or any type of consumption by or application to human or animals.