

# CD45R Monoclonal Antibody (RA3-6B2), Qdot™ 655

## Product Details

Size	100 µL
Species Reactivity	Mouse
Published Species	Mouse
Host/Isotype	Rat / IgG2a, kappa
Class	Monoclonal
Type	Antibody
Clone	RA3-6B2
Conjugate	Qdot™ 655
Excitation/Emission Max	300/654 nm
Immunogen	exon A-specific epitope on CD45
Form	Liquid
Purification	purified
Storage buffer	0.05M borate, pH 8.3, with 1M betaine
Contains	0.05% sodium azide
Storage conditions	4° C
RRID	AB_10374576

## Applications

Flow Cytometry (Flow)

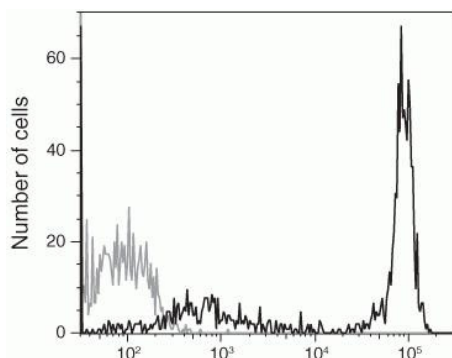
## Tested Dilution

Assay-dependent

## Publications

1 Publication

## Product Images For CD45R Monoclonal Antibody (RA3-6B2), Qdot™ 655



Qdot® 655 anti-mouse CD45R (B220) conjugate  
655/20 band pass filter

### CD45R Antibody (Q10176) in Flow

Log fluorescence intensity profiles of mouse splenocytes gated on lymphocytes and analyzed on a BD LSR II flow cytometer (BD Biosciences, San Jose, CA) using 405 nm excitation and the specified emission filters. The data files were analyzed using FlowJo™ software (Treestar, Inc., [www.flowjo.com](http://www.flowjo.com)). The black line represents cells stained with anti-mouse CD45R (B220) antibody conjugate and the gray line represents unstained cells. Note: Flow cytometric data shown may not necessarily have been generated using the enclosed lot of reagent. For this reason, and due to differences in flow cytometers and cytometer settings, results may vary from those illustrated above. We recommend titrating reagents to determine optimal conditions for use in your systems.

Flow Cytometry (1)

<p>Journal of immunology (Baltimore, Md. : 1950)</p> <p><b>IL-4 Haploinsufficiency Specifically Impairs IgE Responses against Allergens in Mice.</b></p> <p>"Q10176 was used in Flow cytometry/Cell sorting to identify that mice with only one intact Il4 gene copy are significantly impaired in their ability to make specific IgE responses against allergens, whereas IgG1 responses to allergens remain unaffected."</p> <p>Authors: Robinson MJ,Prout M,Mearns H,Kyle R,Camberis M,Forbes-Blom EE,Paul WE,Allen CD,Le Gros G</p>	<p><b>Year</b></p> <p>2017</p> <p><b>Species</b></p> <p>Mouse</p>
---	---

For Research Use Only. Not for use in diagnostic procedures. Not for resale without express authorization. Products are warranted to operate or perform substantially in conformance with published Product specifications in effect at the time of sale, as set forth in the Production documentation, specifications and/or accompanying package inserts ("Documentation"). No claim of suitability for use in applications regulated by FDA is made. The warranty provided herein is valid only when used by properly trained individuals. Unless otherwise stated in the Documentation, this warranty is limited to one year from date of shipment when the Product is subjected to normal, proper and intended usage. This warranty does not extend to anyone other than the Buyer. Any model or sample furnished to Buyer is merely illustrative of the general type and quality of goods and does not represent that any Product will conform to such model or sample. NO OTHER WARRANTIES, EXPRESS OR IMPLIED, ARE GRANTED INCLUDING WITHOUT LIMITATION, IMPLIED WARRANTIES OF MERCHANTABILITY, FITNESS FOR ANY PARTICULAR PURPOSE, OR NON INFRINGEMENT. BUYER'S EXCLUSIVE REMEDY FOR NON-CONFORMING PRODUCTS DURING THE WARRANTY PERIOD IS LIMITED TO REPAIR, REPLACEMENT OF OR REFUND FOR THE NON-CONFORMING PRODUCT(S) AT SELLER'S SOLE OPTION. THERE IS NO OBLIGATION TO REPAIR, REPLACE OR REFUND FOR PRODUCTS AS THE RESULT OF (i) ACCIDENT, DISASTER OR EVENT OF FORCE MAJEURE, (ii) MISUSE, FAULT OR NEGLIGENCE OF OR BY BUYER, (iii) USE OF THE PRODUCTS IN A MANNER FOR WHICH THEY WERE NOT DESIGNED, OR (iv) IMPROPER STORAGE AND HANDLING OF THE PRODUCTS. Unless otherwise expressly stated on the Product or in the documentation accompanying the Product, the Product is intended for research only and is not to be used for any other purpose, including without limitation, unauthorized commercial uses, in vitro diagnostic uses, ex vivo or in vivo therapeutic uses, or any type of consumption by or application to human or animals.