

# Rat IgG1 kappa Isotype Control (eBRG1), eBioscience™

## Product Details

Size	100 µg
Host/Isotype	Rat / IgG1, kappa
Class	Monoclonal
Type	Isotype Control
Clone	eBRG1
Conjugate	Unconjugated
Form	Liquid
Concentration	0.5 mg/mL
Purification	Affinity chromatography
Storage buffer	PBS, pH 7.2
Contains	0.09% sodium azide
Storage conditions	4° C
RRID	AB_470102

Applications	Tested Dilution	Publications
Immunohistochemistry (Frozen) (IHC (F))	Assay-Dependent	-
Immunocytochemistry (ICC/IF)	Assay-Dependent	0 Publication
Flow Cytometry (Flow)	Assay-Dependent	0 Publication
Functional Assay (FN)	-	0 Publication
Control (Ctrl)	Assay-Dependent	-

## Product Specific Information

**Description:** The monoclonal rat IgG1, kappa is useful as an isotype control immunoglobulin.

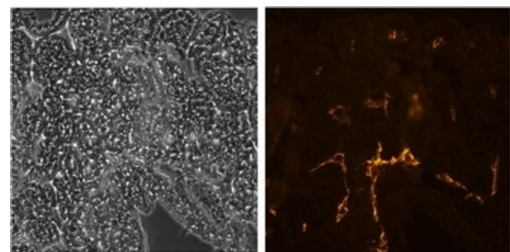
**Applications Reported:** This rat IgG1 isotype control has been reported for use in immunohistochemistry, immunocytochemistry, flow cytometric analysis, and immunoglobulin ELISA.

**Applications Tested:** This rat IgG1 isotype control has been used by flow cytometric analysis of mouse splenocyte suspension and should be used at the same concentration as the experimental antibody.

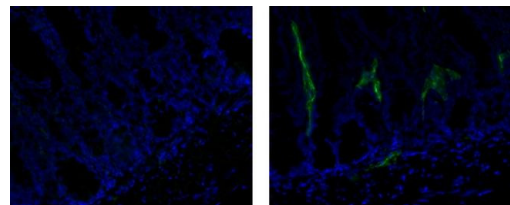
**Purity:** Greater than 90%, as determined by SDS-PAGE.

**Aggregation:** Less than 10%, as determined by HPLC.

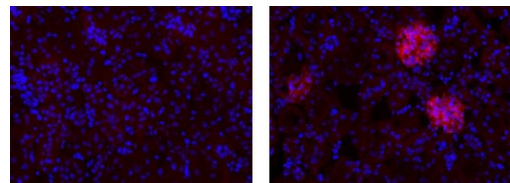
**Filtration:** 0.2 µm post-manufacturing filtered.



**Rat IgG1 kappa Isotype Control (14-4301-82) in IHC (F)**  
Immunohistochemistry of frozen mouse intestine stained with 2.5 µg/mL Rat IgG1 K Isotype Control Purified (left) or 2.5 µg/mL Anti-Mouse Lyve-1 Purified (right) followed by 5 µg/mL Anti-Rat IgG1 eFluor® 615. Nuclei are stained with DAPI.



**Rat IgG1 kappa Isotype Control (14-4301-82) in IHC (F)**  
Immunohistochemistry of frozen mouse intestine stained with 2-5 mg/mL Rat IgG1 K Isotype Control (left) or 2-5 mg/mL Anti-Mouse Lyve-1 Purified (right) followed by 10 µg/mL Anti-Rat IgG1 FITC. Nuclei are stained with DAPI.



**Rat IgG1 kappa Isotype Control (14-4301-82) in IHC (F)**  
Immunohistochemistry on frozen mouse kidney using 10 µg/mL Rat IgG1 Isotype Control (left) and 10 µg/mL Anti-Mouse Ephrin B1 Purified (right) followed by Anti-Rat TRITC. Nuclei are stained with DAPI.

54 References

CD9 co-operation with syndecan-1 is required for a major staphylococcal adhesion pathway. MBio (2023)

Spontaneous Osteoclastogenesis, a risk factor for bone metastasis in advanced luminal A-type breast cancer patients. Front Oncol (2023)

IL-4 and helminth infection downregulate MINCLE-dependent macrophage response to mycobacteria and Th17 adjuvanticity. Elife (2023)

The Culture Dish Surface Influences the Phenotype and Dissociation Strategy in Distinct Mouse Macrophage Populations. Front Immunol (2022)

IL-17-producing follicular Th cells enhance plasma cell differentiation in lupus-prone mice. JCI Insight (2022)

For Research Use Only. Not for use in diagnostic procedures. Not for resale without express authorization. Products are warranted to operate or perform substantially in conformance with published Product specifications in effect at the time of sale, as set forth in the Production documentation, specifications and/or accompanying package inserts ("Documentation"). No claim of suitability for use in applications regulated by FDA is made. The warranty provided herein is valid only when used by properly trained individuals. Unless otherwise stated in the Documentation, this warranty is limited to one year from date of shipment when the Product is subjected to normal, proper and intended usage. This warranty does not extend to anyone other than the Buyer. Any model or sample furnished to Buyer is merely illustrative of the general type and quality of goods and does not represent that any Product will conform to such model or sample. NO OTHER WARRANTIES, EXPRESS OR IMPLIED, ARE GRANTED INCLUDING WITHOUT LIMITATION, IMPLIED WARRANTIES OF MERCHANTABILITY, FITNESS FOR ANY PARTICULAR PURPOSE, OR NON INFRINGEMENT. BUYER'S EXCLUSIVE REMEDY FOR NON-CONFORMING PRODUCTS DURING THE WARRANTY PERIOD IS LIMITED TO REPAIR, REPLACEMENT OF OR REFUND FOR THE NON-CONFORMING PRODUCT(S) AT SELLER'S SOLE OPTION. THERE IS NO OBLIGATION TO REPAIR, REPLACE OR REFUND FOR PRODUCTS AS THE RESULT OF (I) ACCIDENT, DISASTER OR EVENT OF FORCE MAJEURE, (II) MISUSE, FAULT OR NEGLIGENCE OF OR BY BUYER, (III) USE OF THE PRODUCTS IN A MANNER FOR WHICH THEY WERE NOT DESIGNED, OR (IV) IMPROPER STORAGE AND HANDLING OF THE PRODUCTS. Unless otherwise expressly stated on the Product or in the documentation accompanying the Product, the Product is intended for research only and is not to be used for any other purpose, including without limitation, unauthorized commercial uses, in vitro diagnostic uses, ex vivo or in vivo therapeutic uses, or any type of consumption by or application to human or animals.