

Mouse IgG1 Isotype Control (MOPC-21), DyLight™ 488

Product Details	
Size	100 µg
Host/Isotype	Mouse / IgG1, kappa
Class	Monoclonal
Type	Isotype Control
Clone	MOPC-21
Conjugate	DyLight™ 488
Excitation/Emission Max	492/519 nm
Form	Liquid
Concentration	0.1 mg/mL
Purification	Size-exclusion chromatography
Storage buffer	PBS, pH 7.4, with 0.2% BSA
Contains	15mM sodium azide
Storage conditions	4° C, do not freeze
RRID	AB_2536927

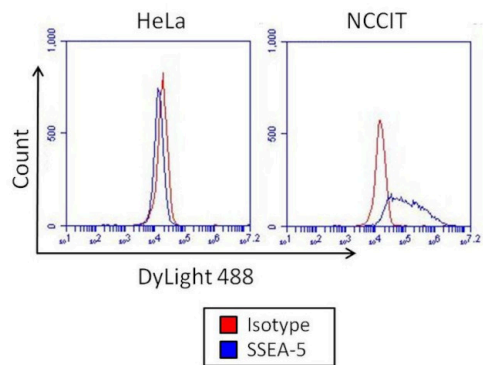
Applications	Tested Dilution	Publications
Western Blot (WB)	Assay-dependent	-
Immunohistochemistry (Paraffin) (IHC (P))	Assay-dependent	-
Immunohistochemistry (Frozen) (IHC (F))	Assay-dependent	-
Immunocytochemistry (ICC/IF)	Assay-dependent	-
Flow Cytometry (Flow)	Assay-dependent	-
Control (Ctrl)	Assay-dependent	-

Product Specific Information

MA1-191-D488 can be used as a negative control in any immunoassay where a DyLight 488-conjugated primary antibody of the mouse IgG1 isotype is used. DyLight 488 has an excitation/emission of 493/518 nm.

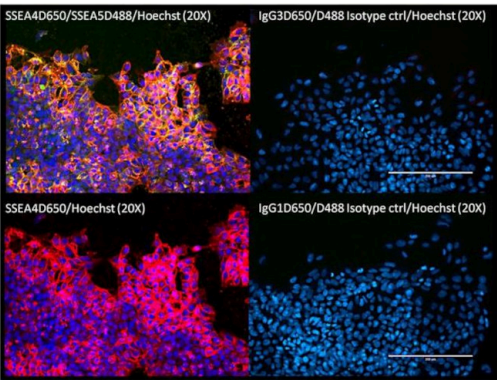
MA1-191-D488 can be used as isotype control for Dylight 488 conjugated IgG1 mouse monoclonal antibodies in immunofluorescence and flow cytometry analysis.

Product Images For Mouse IgG1 Isotype Control (MOPC-21), DyLight™ 488



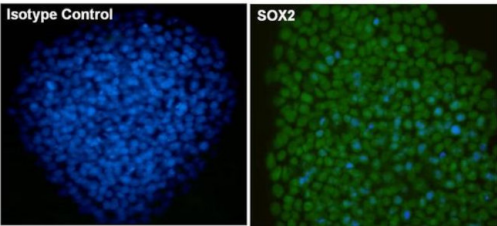
Mouse IgG1 Isotype Control (MA1-191-D488) in Flow

Flow cytometry analysis of SSEA-5 on HeLa cells (left panel) and human embryonal carcinoma NCCIT cells (right panel). Cells were fixed, permeabilized, and stained with a DyLight 488-conjugated SSEA-5 monoclonal antibody (Product # MA1-144-D488, blue histogram) or a DyLight 488-conjugated mouse IgG1 isotype control (Product # MA1-191-D488, red histogram), at a concentration of 20 µg/mL. A representative 10,000 cells were acquired for each sample.



Mouse IgG1 Isotype Control (MA1-191-D488) in ICC/IF

Immunofluorescent analysis of SSEA5 (green) and SSEA4 (red) in human episomal iPSC cells. Cells were grown on vitronectin coated plates, fixed with 4% paraformaldehyde for 15 minutes, and blocked with 3% Blocker BSA (Product # 37525) for 30 minutes at room temperature. Cells were co-stained with DyLight 488-conjugated SSEA5 and DyLight 650-conjugated SSEA4 monoclonal antibodies (top left panel, Product # MA1-144-D488 and Product # MA1-021-D650) or DyLight 488-conjugated Mouse IgG1 and DyLight 650-conjugated Mouse IgG3 isotype control antibodies (right panels, Product # MA1-191-D488 and Product # MA1-190-D650), at a dilution of 1:50 and incubated for 1 hour at room temperature. Nuclei (blue) were stained with Hoechst 33342 dye (Product # 62249). Images were taken on an EVOS FL Imaging system at 20X magnification.



Mouse IgG1 Isotype Control (MA1-191-D488) in ICC/IF

Immunofluorescent analysis of SOX2 (green) in Human episomal iPSC cells. The cells were fixed with formalin for 15 minutes, permeabilized with 0.1% Triton X-100 in TBS for 10 minutes, and blocked with 3% Blocker BSA (Product # 37525) for 30 minutes at room temperature. Cells were stained with Dylight 488-conjugated SOX2 monoclonal antibody (right, Product # MA1-014-D488) or Dylight 488-conjugated Mouse IgG1 isotype control antibody (left, Product # MA1-191-D488), at a dilution of 1:50 and incubated for 1 hour at room temperature. Nuclei (both panels, blue) were stained with Hoechst 33342 dye (Product # 62249). Images were taken at 20X magnification.

View more figures on thermofisher.com

For Research Use Only. Not for use in diagnostic procedures. Not for resale without express authorization. Products are warranted to operate or perform substantially in conformance with published Product specifications in effect at the time of sale, as set forth in the Production documentation, specifications and/or accompanying package inserts ("Documentation"). No claim of suitability for use in applications regulated by FDA is made. The warranty provided herein is valid only when used by properly trained individuals. Unless otherwise stated in the Documentation, this warranty is limited to one year from date of shipment when the Product is subjected to normal, proper and intended usage. This warranty does not extend to anyone other than the Buyer. Any model or sample furnished to Buyer is merely illustrative of the general type and quality of goods and does not represent that any Product will conform to such model or sample. NO OTHER WARRANTIES, EXPRESS OR IMPLIED, ARE GRANTED INCLUDING WITHOUT LIMITATION, IMPLIED WARRANTIES OF MERCHANTABILITY, FITNESS FOR ANY PARTICULAR PURPOSE, OR NON-INFRINGEMENT. BUYER'S EXCLUSIVE REMEDY FOR NON-CONFORMING PRODUCTS DURING THE WARRANTY PERIOD IS LIMITED TO REPAIR, REPLACEMENT OF OR REFUND FOR THE NON-CONFORMING PRODUCT(S) AT SELLER'S SOLE OPTION. THERE IS NO OBLIGATION TO REPAIR, REPLACE OR REFUND FOR PRODUCTS AS THE RESULT OF (I) ACCIDENT, DISASTER OR EVENT OF FORCE MAJEURE, (II) MISUSE, FAULT OR NEGLIGENCE OF OR BY BUYER, (III) USE OF THE PRODUCTS IN A MANNER FOR WHICH THEY WERE NOT DESIGNED, OR (IV) IMPROPER STORAGE AND HANDLING OF THE PRODUCTS. Unless otherwise expressly stated on the Product or in the documentation accompanying the Product, the Product is intended for research only and is not to be used for any other purpose, including without limitation, unauthorized commercial uses, in vitro diagnostic uses, ex vivo or in vivo therapeutic uses, or any type of consumption by or application to human or animals.