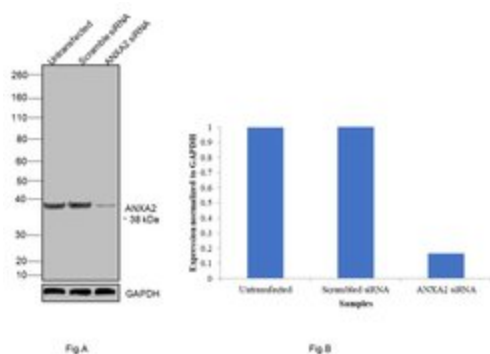


# Annexin A2 Monoclonal Antibody (Z014)

Product Details	
Size	100 µg
Species Reactivity	Bovine, Dog, Human, Sheep
Published Species	Rat, Mouse, Human
Host/Isotope	Mouse / IgG1
Class	Monoclonal
Type	Antibody
Clone	Z014
Conjugate	Unconjugated
Immunogen	Annexin II purified from bovine lung.
Form	Liquid
Purification	purified
Storage buffer	proprietary buffer
Contains	0.09% sodium azide
Storage Conditions	-20°C
RRID	AB_2532925

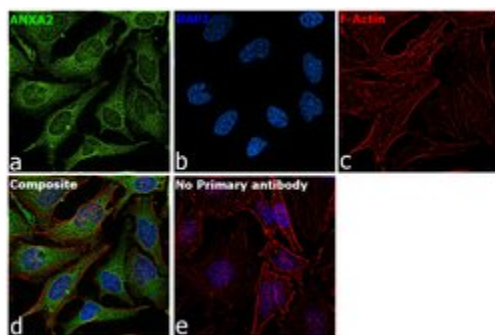
Applications	Tested Dilution	Publications
ELISA (ELISA)	0.1-1.0 µg/mL	-
Immunocytochemistry (ICC)	5 µg	-
Immunofluorescence (IF)	5 µg	1 Publication
Immunohistochemistry (IHC)	5-10 µg/mL	-
Western Blot (WB)	0.5-1.0 µg/mL	7 Publications
Immunohistochemistry (Frozen) (IHC (F))	-	1 Publication
Immunoprecipitation (IP)	-	1 Publication
Neutralization (Neu)	-	2 Publications



### Annexin A2 Antibody (03-4400)

Antibody specificity was demonstrated by siRNA mediated knockdown of target protein. HeLa cells were transfected with Annexin A2 siRNA and decrease in signal intensity was observed in Western Blot application using Anti-Annexin A2 Monoclonal Antibody (Z014) (Product # 03-4400). Knockdown validation info.

## Product Images For Annexin A2 Monoclonal Antibody (Z014)

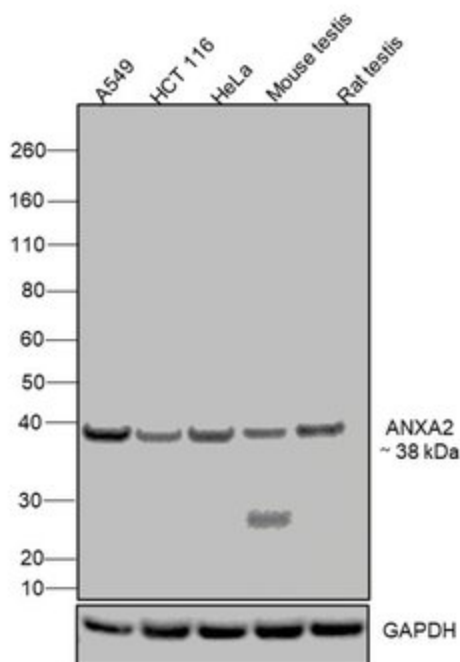


### Annexin A2 Antibody (03-4400) in ICC

Immunofluorescence analysis of Annexin A2 was performed using 70% confluent log phase Hep G2 cells. The cells were fixed with 4% paraformaldehyde for 10 minutes, permeabilized with 0.1% Triton™ X-100 for 15 minutes, and blocked with 2% BSA for 15 minutes at room temperature. The cells were labeled with Annexin A2 Monoclonal Antibody (Z014) (Product # 03-4400) at 5ug in 0.1% BSA, incubated at 4 degree celsius overnight and then labeled with Goat anti-Mouse IgG (H+L) Superclonal™ Recombinant Secondary Antibody, Alexa Fluor® 488 conjugate (Product # A28175), (1:2000 dilution), for 45 minutes at room temperature (Panel a: Green). Nuclei (Panel b:Blue) were stained with SlowFade® Gold Antifade Mountant with DAPI (Product # S36938). F-actin (Panel c: Red) was stained with Rhodamine Phalloidin (Product # R415, 1:300 dilution). Panel d represents the merged image showing mitochondrial localization. Panel e represents control cells with no primary antibody to assess background. The images were captured at 60x magnification.

### Annexin A2 Antibody (03-4400) in WB

Western blot was performed using Anti-Annexin A2 Monoclonal Antibody (Z014) (Product # 03-4400) and a 38kDa band corresponding to Annexin A2 was observed across cell lines and tissues tested. Whole cell extracts (30 µg lysate) of A549 (Lane 1), HCT 116 (Lane 2), HeLa (Lane 3), Mouse Testis (Lane 4), Rat Testis (Lane 5) were electrophoresed using NuPAGE™ 4-12% Bis-Tris Protein Gel (Product # NP0322BOX). Resolved proteins were then transferred onto a Nitrocellulose membrane (Product # IB23001) by iBlot® 2 Dry Blotting System (Product # IB21001). The blot was probed with the primary antibody (1:1000 Dilution) and detected by chemiluminescence with Goat anti-Mouse IgG (H+L) Superclonal™ Recombinant Secondary Antibody, HRP (Product # A28177, 1:4000 dilution) using the iBright FL 1000 (Product # A32752). Chemiluminescent detection was performed using Novex® ECL Chemiluminescent Substrate Reagent Kit (Product # WP20005).



## 12 References

### Immunohistochemistry (Frozen) (1)

Journal of immunology (Baltimore, Md. : 1950)

#### Annexin A2 Enhances Complement Activation by Inhibiting Factor H.

"34400 was used in flow cytometry and immunohistochemistry - frozen section to identify annexin A2 as a binding partner of factor H"

Authors: Renner B,Tong HH,Laskowski J,Jonscher K,Goetz L,Woolaver R,Hannan J,Li YX,Hourcade D,Pickering MC, Holers VM,Thurman JM

**Species**  
Mouse

**Dilution**  
Not Cited

**Year**  
2016

### Western Blot (7)

International journal for parasitology

#### Up-regulation of annexin A2 in cholangiocarcinoma caused by Opisthorchis viverrini and its implication as a prognostic marker.

"03-4400 was used in Western Blotting to study how ANXA2 expression in tumors may be useful for predicting the poor outcome of CCA patients."

Authors: Yonglitthipagon P,Pairojkul C,Chamgramol Y,Mulvenna J,Sripa B

**Species**  
Human

**Dilution**  
1:1000

**Year**  
2010

The Journal of biological chemistry

#### Interferon-gamma reduces cell surface expression of annexin 2 and suppresses the invasive capacity of prostate cancer cells.

"03-4400 was used in blocking or activating experiment to examine the effect of interferon-gamma treatment on cell surface protein expression using prostate cancer cells"

Authors: Hastie C,Masters JR,Moss SE,Naaby-Hansen S

**Species**  
Human  
Not Applicable

**Dilution**  
Not Cited  
Not Cited

**Year**  
2008

[View more WB references on thermofisher.com](#)

### Immunofluorescence (1)

The Journal of biological chemistry

#### Interferon-gamma reduces cell surface expression of annexin 2 and suppresses the invasive capacity of prostate cancer cells.

"03-4400 was used in blocking or activating experiment to examine the effect of interferon-gamma treatment on cell surface protein expression using prostate cancer cells"

Authors: Hastie C,Masters JR,Moss SE,Naaby-Hansen S

**Species**  
Human  
Not Applicable

**Dilution**  
Not Cited  
Not Cited

**Year**  
2008

### More applications with references on thermofisher.com

Neu (2) IP (1)

For Research Use Only. Not for use in diagnostic procedures. Not for resale without express authorization. Products are warranted to operate or perform substantially in conformance with published Product specifications in effect at the time of sale, as set forth in the Production documentation, specifications and/or accompanying package inserts ("Documentation"). No claim of suitability for use in applications regulated by FDA is made. The warranty provided herein is valid only when used by properly trained individuals. Unless otherwise stated in the Documentation, this warranty is limited to one year from date of shipment when the Product is subjected to normal, proper and intended usage. This warranty does not extend to anyone other than the Buyer. Any model or sample furnished to Buyer is merely illustrative of the general type and quality of goods and does not represent that any Product will conform to such model or sample. NO OTHER WARRANTIES, EXPRESS OR IMPLIED, ARE GRANTED INCLUDING WITHOUT LIMITATION, IMPLIED WARRANTIES OF MERCHANTABILITY, FITNESS FOR ANY PARTICULAR PURPOSE, OR NON INFRINGEMENT. BUYER'S EXCLUSIVE REMEDY FOR NON-CONFORMING PRODUCTS DURING THE WARRANTY PERIOD IS LIMITED TO REPAIR, REPLACEMENT OF OR REFUND FOR THE NON-CONFORMING PRODUCT(S) AT SELLER'S SOLE OPTION. THERE IS NO OBLIGATION TO REPAIR, REPLACE OR REFUND FOR PRODUCTS AS THE RESULT OF (I) ACCIDENT, DISASTER OR EVENT OF FORCE MAJEURE, (II) MISUSE, FAULT OR NEGLIGENCE OF OR BY BUYER, (III) USE OF THE PRODUCTS IN A MANNER FOR WHICH THEY WERE NOT DESIGNED, OR (IV) IMPROPER STORAGE AND HANDLING OF THE PRODUCTS. Unless otherwise expressly stated on the Product or in the documentation accompanying the Product, the Product is intended for research only and is not to be used for any other purpose, including without limitation, unauthorized commercial uses, in vitro diagnostic uses, ex vivo or in vivo therapeutic uses, or any type of consumption by or application to human or animals.