

CD20 Monoclonal Antibody (2H7), FITC, eBioscience™

Product Details	
Size	100 Tests
Species Reactivity	Human
Published Species	Human
Host/Isotype	Mouse / IgG2b, kappa
Recommended Isotype Control	Mouse IgG2b kappa Isotype Control (eBMG2b), FITC, eBioscience™
Class	Monoclonal
Type	Antibody
Clone	2H7
Conjugate	FITC
Excitation/Emission Max	498/517 nm
Form	Liquid
Concentration	5 µL/Test
Purification	Affinity chromatography
Storage buffer	PBS, pH 7.2, with 0.2% BSA
Contains	0.09% sodium azide
Storage conditions	4° C, store in dark, DO NOT FREEZE!
RRID	AB_2572440

Applications	Tested Dilution	Publications
Immunohistochemistry (IHC)	-	4 Publications
Immunocytochemistry (ICC/IF)	-	1 Publication
Flow Cytometry (Flow)	5 µL (0.5 µg)/test	12 Publications

Product Specific Information

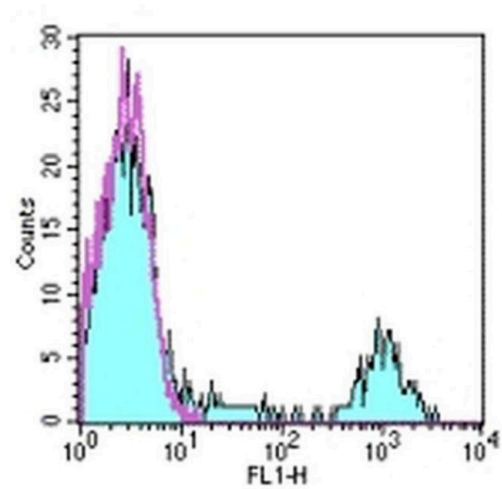
Description: The 2H7 monoclonal antibody reacts with human CD20, a 33-36 kDa transmembrane protein. CD20 is expressed by developing B cells as well as mature B cells but not plasma cells. CD20 has been detected at low levels on a small subset of mature T cells. It is suggested that CD20 plays a role in B-cell activation.

Applications Reported: The 2H7 antibody has been reported for use in flow cytometric analysis.

Applications Tested: The 2H7 antibody has been pre-titrated and tested by flow cytometric analysis of normal human peripheral blood cells. This can be used at 5 µL (0.5 µg) per test. A test is defined as the amount (µg) of antibody that will stain a cell sample in a final volume of 100 µL. Cell number should be determined empirically but can range from 10⁵ to 10⁸ cells /test.

Excitation: 488 nm; Emission: 520 nm; Laser: Blue Laser.

Filtration: 0.2 µm post-manufacturing filtered.



CD20 Antibody (11-0209-42) in Flow

Staining of normal human peripheral blood cells with Mouse IgG2b K Isotype Control FITC (Product # 11-4732-42) (open histogram) or Anti-Human CD20 FITC (filled histogram). Cells in the lymphocyte gate were used for analysis.

[View more figures on thermofisher.com](https://thermofisher.com)

Immunohistochemistry (4)

<p>Frontiers in immunology</p> <p>IL-33 Alarmin and Its Active Proinflammatory Fragments Are Released in Small Intestine in Celiac Disease.</p> <p>"Published figure using CD20 monoclonal antibody (Product # 11-0209-42) in Immunohistochemistry"</p> <p>Authors: Perez F,Ruera CN,Miculan E,Carasi P,Dubois-Camacho K,Garbi L,Guzman L,Hermoso MA,Chirido FG</p>	<p>Year 2021</p>
<p>Stem cell research & therapy</p> <p>Relative safety of various spermatogenic stem cell purification methods for application in spermatogenic stem cell transplantation.</p> <p>"Published figure using CD20 monoclonal antibody (Product # 11-0209-42) in Immunohistochemistry"</p> <p>Authors: Tian J,Ma K,Pei CB,Zhang SH,Li X,Zhou Y,Yan B,Wang HY,Ma LH</p>	<p>Year 2019</p>

[View more IHC references on thermofisher.com](#)

Immunocytochemistry (1)

<p>Journal of immunology (Baltimore, Md. : 1950)</p> <p>Localized Store-Operated Calcium Influx Represses CD95-Dependent Apoptotic Effects of Rituximab in Non-Hodgkin B Lymphomas.</p> <p>"11-0209 was used in Immunocytochemistry-immunofluorescence to study the effects of localised store-operated Calcium influx on the apoptotic effects of rituximab in non-Hodgkin B lymphoma."</p> <p>Authors: Vacher P,Vacher AM,Pineau R,Latour S,Soubeyran I,Pangault C,Tarte K,Soubeyran P,Ducret T,Bresson-Bepoldin L</p>	<p>Year 2015</p> <p>Species Human</p>
--	---

Flow Cytometry (12)

<p>Aging and disease</p> <p>A Soluble NK-CAR Mediates the Specific Cytotoxicity of NK Cells toward the Target CD20⁺ Lymphoma Cells.</p> <p>"Published figure using CD20 monoclonal antibody (Product # 11-0209-42) in Flow Cytometry"</p> <p>Authors: Liu R,Luo Q,Luo W,Wan L,Zhu Q,Yin X,Lu X,Song Z,Wei L,Xiang Z,Zou Y</p>	<p>Year 2022</p>
--	-----------------------------

[View more Flow references on thermofisher.com](#)

More applications with references on thermofisher.com

For Research Use Only. Not for use in diagnostic procedures. Not for resale without express authorization. Products are warranted to operate or perform substantially in conformance with published Product specifications in effect at the time of sale, as set forth in the Production documentation, specifications and/or accompanying package inserts ("Documentation"). No claim of suitability for use in applications regulated by FDA is made. The warranty provided herein is valid only when used by properly trained individuals. Unless otherwise stated in the Documentation, this warranty is limited to one year from date of shipment when the Product is subjected to normal, proper and intended usage. This warranty does not extend to anyone other than the Buyer. Any model or sample furnished to Buyer is merely illustrative of the general type and quality of goods and does not represent that any Product will conform to such model or sample. NO OTHER WARRANTIES, EXPRESS OR IMPLIED, ARE GRANTED INCLUDING WITHOUT LIMITATION, IMPLIED WARRANTIES OF MERCHANTABILITY, FITNESS FOR ANY PARTICULAR PURPOSE, OR NON INFRINGEMENT. BUYER'S EXCLUSIVE REMEDY FOR NON-CONFORMING PRODUCTS DURING THE WARRANTY PERIOD IS LIMITED TO REPAIR, REPLACEMENT OF OR REFUND FOR THE NON-CONFORMING PRODUCT(S) AT SELLER'S SOLE OPTION. THERE IS NO OBLIGATION TO REPAIR, REPLACE OR REFUND FOR PRODUCTS AS THE RESULT OF (I) ACCIDENT, DISASTER OR EVENT OF FORCE MAJEURE, (II) MISUSE, FAULT OR NEGLIGENCE OF OR BY BUYER, (III) USE OF THE PRODUCTS IN A MANNER FOR WHICH THEY WERE NOT DESIGNED, OR (IV) IMPROPER STORAGE AND HANDLING OF THE PRODUCTS. Unless otherwise expressly stated on the Product or in the documentation accompanying the Product, the Product is intended for research only and is not to be used for any other purpose, including without limitation, unauthorized commercial uses, in vitro diagnostic uses, ex vivo or in vivo therapeutic uses, or any type of consumption by or application to human or animals.