

CD51/CD61 (Integrin alpha v beta 3) Monoclonal Antibody (23C6), FITC, eBioscience™

Product Details	
Size	100 Tests
Species Reactivity	Human
Published Species	Human
Host/Isotope	Mouse / IgG1, kappa
Recommended Isotype Control	Mouse IgG1 kappa Isotype Control (P3.6.2.8.1), FITC, eBioscience™
Class	Monoclonal
Type	Antibody
Clone	23C6
Conjugate	FITC
Form	Liquid
Concentration	5 µL/Test
Purification	Affinity chromatography
Storage buffer	PBS, pH 7.2, with 0.1% gelatin, 0.2% BSA
Contains	0.09% sodium azide
Storage Conditions	4° C, store in dark, DO NOT FREEZE!
RRID	AB_1907402

Applications	Tested Dilution	Publications
Flow Cytometry (Flow)	5 µL (1 µg)/test	6 Publications
Immunofluorescence (IF)	-	1 Publication

Product Specific Information

Description: The 23C6 monoclonal antibody reacts with the human CD51/CD61 dimer, also known as the integrin alphav/beta3. CD51, an ~120 kDa surface molecule can also non-covalently associate with other beta subunits of the integrin family including beta1 (CD29), beta5 and beta6 to form receptors for extracellular matrix components. Heterodimers of CD51/CD61 are expressed by melanoma cells, endothelial cells and osteoclasts and at very low levels by platelets. The CD51/CD61 complex mediates adhesion to fibrinogen, fibronectin, vitronectin and thrombospondin.

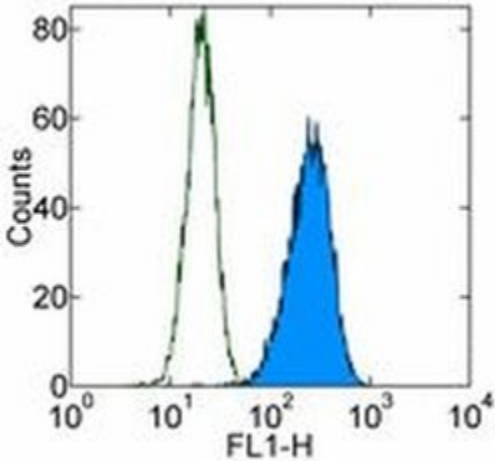
Applications Reported: The 23C6 antibody has been reported for use in flow cytometric analysis.

Applications Tested: The 23C6 antibody has been pre-titrated and tested by flow cytometric analysis of human melanoma cell line and peripheral blood cells. This can be used at 5 µL (1 µg) per test. A test is defined as the amount (µg) of antibody that will stain a cell sample in a final volume of 100 µL. Cell number should be determined empirically but can range from 10⁵ to 10⁸ cells/test.

Excitation: 488 nm; Emission: 520 nm; Laser: Blue Laser.

Filtration: 0.2 µm post-manufacturing filtered.

Product Images For CD51/CD61 (Integrin alpha v beta 3) Monoclonal Antibody (23C6), FITC, eBioscience™



CD51/CD61 (Integrin alpha v beta 3) Antibody (11-0519-42) in Flow
Staining of the M21 cell line with Mouse IgG1 kappa Isotype Control FITC (Product # 11-4714-42) (open histogram) or Anti-Human CD51/CD61 (Integrin alpha/beta 3) FITC (filled histogram). Total viable cells were used for analysis.

7 References

Flow Cytometry (6)

Stem cells (Dayton, Ohio)

Comprehensive Cell Surface Antigen Analysis Identifies Transferrin Receptor Protein-1 (CD71) as a Negative Selection Marker for Human Neuronal Cells.

Authors: Menon V, Thomas R, Elgueta C, Horl M, Osborn T, Hallett PJ, Bartos M, Isacson O, Pruszkak J

Species
Human

Dilution
4 µg/mL

Year
2019

Molecular therapy. Nucleic acids

An Efficient Bivalent Cyclic RGD-PIK3CB siRNA Conjugate for Specific Targeted Therapy against Glioblastoma In Vitro and In Vivo.

"11-0519 was used in Immunocytochemistry-immunofluorescence to reveal a great translational potential of biRGD-siPIK3CB conjugate as a novel molecule for glioblastoma therapy."

Authors: Cen B, Wei Y, Huang W, Teng M, He S, Li J, Wang W, He G, Bai X, Liu X, Yuan Y, Pan X, Ji A

Species
Human

Dilution
Not Cited

Year
2018

[View more Flow references on thermofisher.com](#)

Immunofluorescence (1)

Molecular therapy. Nucleic acids

An Efficient Bivalent Cyclic RGD-PIK3CB siRNA Conjugate for Specific Targeted Therapy against Glioblastoma In Vitro and In Vivo.

"11-0519 was used in Immunocytochemistry-immunofluorescence to reveal a great translational potential of biRGD-siPIK3CB conjugate as a novel molecule for glioblastoma therapy."

Authors: Cen B, Wei Y, Huang W, Teng M, He S, Li J, Wang W, He G, Bai X, Liu X, Yuan Y, Pan X, Ji A

Species
Human

Dilution
Not Cited

Year
2018

More applications with references on thermofisher.com

For Research Use Only. Not for use in diagnostic procedures. Not for resale without express authorization. Products are warranted to operate or perform substantially in conformance with published Product specifications in effect at the time of sale, as set forth in the Production documentation, specifications and/or accompanying package inserts ("Documentation"). No claim of suitability for use in applications regulated by FDA is made. The warranty provided herein is valid only when used by properly trained individuals. Unless otherwise stated in the Documentation, this warranty is limited to one year from date of shipment when the Product is subjected to normal, proper and intended usage. This warranty does not extend to anyone other than the Buyer. Any model or sample furnished to Buyer is merely illustrative of the general type and quality of goods and does not represent that any Product will conform to such model or sample. NO OTHER WARRANTIES, EXPRESS OR IMPLIED, ARE GRANTED INCLUDING WITHOUT LIMITATION, IMPLIED WARRANTIES OF MERCHANTABILITY, FITNESS FOR ANY PARTICULAR PURPOSE, OR NON-INFRINGEMENT. BUYER'S EXCLUSIVE REMEDY FOR NON-CONFORMING PRODUCTS DURING THE WARRANTY PERIOD IS LIMITED TO REPAIR, REPLACEMENT OF OR REFUND FOR THE NON-CONFORMING PRODUCT(S) AT SELLER'S SOLE OPTION. THERE IS NO OBLIGATION TO REPAIR, REPLACE OR REFUND FOR PRODUCTS AS THE RESULT OF (I) ACCIDENT, DISASTER OR EVENT OF FORCE MAJEURE, (II) MISUSE, FAULT OR NEGLIGENCE OF OR BY BUYER, (III) USE OF THE PRODUCTS IN A MANNER FOR WHICH THEY WERE NOT DESIGNED, OR (IV) IMPROPER STORAGE AND HANDLING OF THE PRODUCTS. Unless otherwise expressly stated on the Product or in the documentation accompanying the Product, the Product is intended for research only and is not to be used for any other purpose, including without limitation, unauthorized commercial uses, in vitro diagnostic uses, ex vivo or in vivo therapeutic uses, or any type of consumption by or application to human or animals.