

CD138 (Syndecan-1) Monoclonal Antibody (DL-101), FITC, eBioscience™

Product Details	
Size	100 Tests
Species Reactivity	Human
Published Species	Human, Rhesus monkey
Host/Isotype	Mouse / IgG1, kappa
Recommended Isotype Control	Mouse IgG1 kappa Isotype Control (P3.6.2.8.1), FITC, eBioscience™
Class	Monoclonal
Type	Antibody
Clone	DL-101
Conjugate	FITC
Excitation/Emission Max	498/517 nm
Form	Liquid
Concentration	5 µL/Test
Purification	Affinity chromatography
Storage buffer	PBS, pH 7.2, with 0.2% BSA
Contains	0.09% sodium azide
Storage conditions	4° C, store in dark, DO NOT FREEZE!
RRID	AB_11039872

Applications	Tested Dilution	Publications
Immunocytochemistry (ICC/IF)	-	1 Publication
Flow Cytometry (Flow)	5 µL (1 µg)/test	7 Publications

Product Specific Information

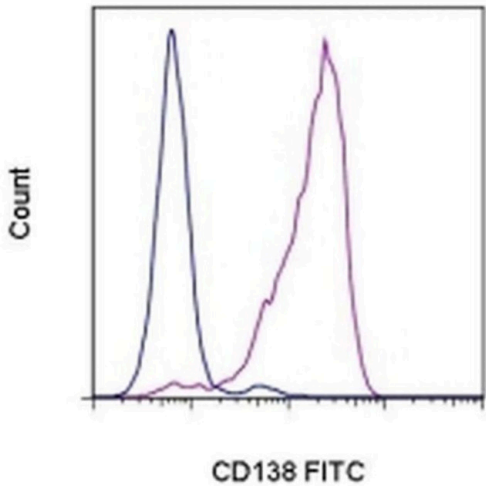
Description: The DL-101 monoclonal antibody reacts with human CD138, also known as syndecan-1. CD138 is a transmembrane protein containing chondroitin sulfate and heparin sulfate moieties responsible for binding to the extracellular matrix components. CD138 is not expressed by mature B cells but is present on pre-B cells and the finally differentiated plasma cells.

Applications Reported: DL-101 has been reported for use in flow cytometric analysis.

Applications Tested: This DL-101 antibody has been pre-titrated and tested by flow cytometric analysis of the U266 cell line. This can be used at 5 µL (1 µg) per test. A test is defined as the amount (µg) of antibody that will stain a cell sample in a final volume of 100 µL. Cell number should be determined empirically but can range from 10⁵ to 10⁸ cells/test.

Excitation: 488 nm; **Emission:** 520 nm; **Laser:** Blue Laser.

Filtration: 0.2 µm post-manufacturing filtered.



CD138 (Syndecan-1) Antibody (11-1389-42) in Flow
Staining of the U266 cell line with Mouse IgG1 K Isotype Control FITC (Product # 11-4714-42) (blue histogram) or Anti-Human CD138 (Syndecan-1) FITC (purple histogram). Total viable cells, as determined by Fixable Viability Dye eFluor® 660, were used for analysis.

[View more figures on thermofisher.com](#)

8 References

Immunocytochemistry (1)

<p>The Journal of clinical investigation</p> <p>Phosphorylation-mediated EZH2 inactivation promotes drug resistance in multiple myeloma.</p> <p>"Published figure using CD138 (Syndecan-1) monoclonal antibody (Product # 11-1389-42) in Immunocytochemistry"</p> <p>Authors: Kikuchi J,Koyama D,Wada T,Izumi T,Hofgaard PO,Bogen B,Furukawa Y</p>	<p>Year</p> <p>2015</p>
---	--------------------------------

Flow Cytometry (7)

<p>PLoS pathogens</p> <p>Highly efficient CRISPR-Cas9-mediated gene knockout in primary human B cells for functional genetic studies of Epstein-Barr virus infection.</p> <p>"Published figure using CD138 (Syndecan-1) monoclonal antibody (Product # 11-1389-42) in Flow Cytometry"</p> <p>Authors: Akidil E,Albanese M,Buschle A,Ruhle A,Pich D,Keppler OT,Hammerschmidt W</p>	<p>Year</p> <p>2021</p>
--	--------------------------------

<p>Nature communications</p> <p>Peli1 negatively regulates noncanonical NF-B signaling to restrain systemic lupus erythematosus.</p> <p>"Published figure using CD138 (Syndecan-1) monoclonal antibody (Product # 11-1389-42) in Flow Cytometry"</p> <p>Authors: Liu J,Huang X,Hao S,Wang Y,Liu M,Xu J,Zhang X,Yu T,Gan S,Dai D,Luo X,Lu Q,Mao C,Zhang Y,Shen N,Li B,Huang M,Zhu X,Jin J,Cheng X,Sun SC,Xiao Y</p>	<p>Year</p> <p>2018</p> <p>Species</p> <p>Human</p>
---	---

[View more Flow references on thermofisher.com](#)

More applications with references on thermofisher.com

For Research Use Only. Not for use in diagnostic procedures. Not for resale without express authorization. Products are warranted to operate or perform substantially in conformance with published Product specifications in effect at the time of sale, as set forth in the Production documentation, specifications and/or accompanying package inserts ("Documentation"). No claim of suitability for use in applications regulated by FDA is made. The warranty provided herein is valid only when used by properly trained individuals. Unless otherwise stated in the Documentation, this warranty is limited to one year from date of shipment when the Product is subjected to normal, proper and intended usage. This warranty does not extend to anyone other than the Buyer. Any model or sample furnished to Buyer is merely illustrative of the general type and quality of goods and does not represent that any Product will conform to such model or sample. NO OTHER WARRANTIES, EXPRESS OR IMPLIED, ARE GRANTED INCLUDING WITHOUT LIMITATION, IMPLIED WARRANTIES OF MERCHANTABILITY, FITNESS FOR ANY PARTICULAR PURPOSE, OR NON-INFRINGEMENT. BUYER'S EXCLUSIVE REMEDY FOR NON-CONFORMING PRODUCTS DURING THE WARRANTY PERIOD IS LIMITED TO REPAIR, REPLACEMENT OF OR REFUND FOR THE NON-CONFORMING PRODUCT(S) AT SELLER'S SOLE OPTION. THERE IS NO OBLIGATION TO REPAIR, REPLACE OR REFUND FOR PRODUCTS AS THE RESULT OF (i) ACCIDENT, DISASTER OR EVENT OF FORCE MAJEURE, (ii) MISUSE, FAULT OR NEGLIGENCE OF OR BY BUYER, (iii) USE OF THE PRODUCTS IN A MANNER FOR WHICH THEY WERE NOT DESIGNED, OR (iv) IMPROPER STORAGE AND HANDLING OF THE PRODUCTS. Unless otherwise expressly stated on the Product or in the documentation accompanying the Product, the Product is intended for research only and is not to be used for any other purpose, including without limitation, unauthorized commercial uses, in vitro diagnostic uses, ex vivo or in vivo therapeutic uses, or any type of consumption by or application to human or animals.