

CD138 (Syndecan-1) Monoclonal Antibody (DL-101), FITC, eBioscience™

Product Details	
Size	100 Tests
Species Reactivity	Human
Published Species	Human
Host/Isotype	Mouse / IgG1, kappa
Recommended Isotype Control	Mouse IgG1 kappa Isotype Control (P3.6.2.8.1), FITC, eBioscience™
Class	Monoclonal
Type	Antibody
Clone	DL-101
Conjugate	FITC
Form	Liquid
Concentration	5 µL/Test
Purification	Affinity chromatography
Storage buffer	PBS, pH 7.2, with 0.1% gelatin, 0.2% BSA
Contains	0.09% sodium azide
Storage conditions	4° C, store in dark, DO NOT FREEZE!
RRID	AB_11039872

Applications	Tested Dilution	Publications
Immunocytochemistry (ICC/IF)	-	1 Publication
Flow Cytometry (Flow)	5 µL (1 µg)/test	6 Publications

Product Specific Information

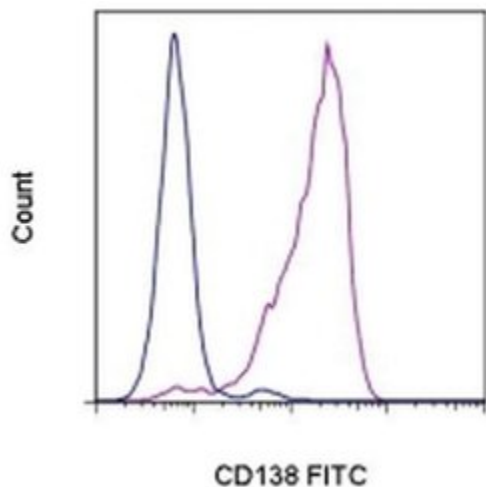
Description: The DL-101 monoclonal antibody reacts with human CD138, also known as syndecan-1. CD138 is a transmembrane protein containing chondroitin sulfate and heparin sulfate moieties responsible for binding to the extracellular matrix components. CD138 is not expressed by mature B cells but is present on pre-B cells and the finally differentiated plasma cells.

Applications Reported: DL-101 has been reported for use in flow cytometric analysis.

Applications Tested: This DL-101 antibody has been pre-titrated and tested by flow cytometric analysis of the U266 cell line. This can be used at 5 µL (1 µg) per test. A test is defined as the amount (µg) of antibody that will stain a cell sample in a final volume of 100 µL. Cell number should be determined empirically but can range from 10⁵ to 10⁸ cells/test.

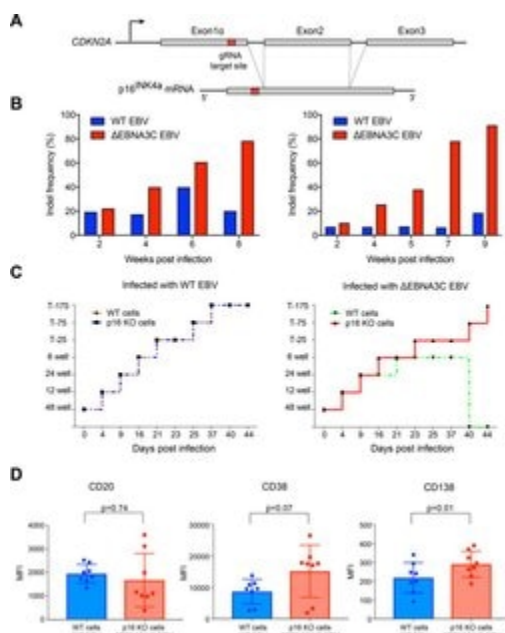
Excitation: 488 nm; **Emission:** 520 nm; **Laser:** Blue Laser.

Filtration: 0.2 µm post-manufacturing filtered.



CD138 (Syndecan-1) Antibody (11-1389-42) in Flow

Staining of the U266 cell line with Mouse IgG1 K Isotype Control FITC (Product # 11-4714-42) (blue histogram) or Anti-Human CD138 (Syndecan-1) FITC (purple histogram). Total viable cells, as determined by Fixable Viability Dye eFluor® 660, were used for analysis.



CD138 (Syndecan-1) Antibody (11-1389-42)

Fig 4 p16 INK4a is a functional barrier to EBV driven proliferation of lymphoblastoid cells. (A) Blueprint of the primary transcript and the spliced mRNA with the three exons of CDKN2A on chromosome 9 encoding the p16 INK4a protein. The target site of the RNP complex within the 1st exon (exon1alpha) (chr9:21,974,678-21,974,827) is shown. (B) Study of the biological effect of the CDKN2A knockout in a time course experiment. WT and p16 KO cells were mixed such that the fraction of the latter was in the order of 10 to 20%, when the cells were infected with WT or DeltaEBNA3C EBV strains. The knockout status of the CDKN2A gene was studied by next generation sequencing to analyze the CD46 locus of the mixed cell populations over time. The fraction of cells with a disabled CDKN2A gene increased in cells infected with DeltaEBNA3C EBV exceeding 80% after eight weeks, whereas the knockout status of CDKN2A in the population of cells infected with WT EBV did not show a clear trend. Results from two biological replicates are shown, additional replicates can be found in S4A Fig . (C) Cell numbers of four different B cell populations were plotted as a function of days post nucleofection (x-axis) versus the format of the cell culture vessel (y-axis) starting with a single well in a 48-well cluster plate. 2×10^6 B cells with an intact CDKN2A locus (WT cells) or cells with an edited CDKN2A gene (p16 KO cells) were infected with wild-type (WT) EBV (left panel) or DeltaEBNA3C EBV (right panel).

View more figures on [thermofisher.com](https://www.thermofisher.com)

Immunocytochemistry (1)

The Journal of clinical investigation

Phosphorylation-mediated EZH2 inactivation promotes drug resistance in multiple myeloma.

"Published figure using CD138 (Syndecan-1) monoclonal antibody (Product # 11-1389-42) in Immunocytochemistry"

Authors: Kikuchi J, Koyama D, Wada T, Izumi T, Hofgaard PO, Bogen B, Furukawa Y

Species
Not Applicable

Dilution
Not Cited

Year
2015

Flow Cytometry (6)

Journal of immunology (Baltimore, Md. : 1950)

Long-lived plasma cells from human small intestine biopsies secrete immunoglobulins for many weeks in vitro.

"11-1389 was used in Flow cytometry/Cell sorting to demonstrate that the human small intestine harbors nonproliferating plasma cells that are instructed by the microenvironment for prolonged survival and Ab secretion."

Authors: Mesin L, Di Niro R, Thompson KM, Lundin KE, Sollid LM

Species
Human

Dilution
Not Cited

Year
2011

Blood

The PD-1/PD-L1 axis modulates the natural killer cell versus multiple myeloma effect: a therapeutic target for CT-011, a novel monoclonal anti-PD-1 antibody.

"11-1389 was used in Flow cytometry/Cell sorting to examine the NK cell response against MM, mediated by the PD-1/PD-L1 signalling axis and CT-011."

Authors: Benson DM, Bakan CE, Mishra A, Hofmeister CC, Efebera Y, Becknell B, Baiocchi RA, Zhang J, Yu J, Smith MK, Greenfield CN, Porcu P, Devine SM, Rotem-Yehudar R, Lozanski G, Byrd JC, Caligiuri MA

Species
Human

Dilution
Not Cited

Year
2010

[View more Flow references on thermofisher.com](#)

More applications with references on thermofisher.com

For Research Use Only. Not for use in diagnostic procedures. Not for resale without express authorization. Products are warranted to operate or perform substantially in conformance with published Product specifications in effect at the time of sale, as set forth in the Production documentation, specifications and/or accompanying package inserts ("Documentation"). No claim of suitability for use in applications regulated by FDA is made. The warranty provided herein is valid only when used by properly trained individuals. Unless otherwise stated in the Documentation, this warranty is limited to one year from date of shipment when the Product is subjected to normal, proper and intended usage. This warranty does not extend to anyone other than the Buyer. Any model or sample furnished to Buyer is merely illustrative of the general type and quality of goods and does not represent that any Product will conform to such model or sample. NO OTHER WARRANTIES, EXPRESS OR IMPLIED, ARE GRANTED INCLUDING WITHOUT LIMITATION, IMPLIED WARRANTIES OF MERCHANTABILITY, FITNESS FOR ANY PARTICULAR PURPOSE, OR NON INFRINGEMENT. BUYER'S EXCLUSIVE REMEDY FOR NON-CONFORMING PRODUCTS DURING THE WARRANTY PERIOD IS LIMITED TO REPAIR, REPLACEMENT OF OR REFUND FOR THE NON-CONFORMING PRODUCT(S) AT SELLER'S SOLE OPTION. THERE IS NO OBLIGATION TO REPAIR, REPLACE OR REFUND FOR PRODUCTS AS THE RESULT OF (I) ACCIDENT, DISASTER OR EVENT OF FORCE MAJEURE, (II) MISUSE, FAULT OR NEGLIGENCE OF OR BY BUYER, (III) USE OF THE PRODUCTS IN A MANNER FOR WHICH THEY WERE NOT DESIGNED, OR (IV) IMPROPER STORAGE AND HANDLING OF THE PRODUCTS. Unless otherwise expressly stated on the Product or in the documentation accompanying the Product, the Product is intended for research only and is not to be used for any other purpose, including without limitation, unauthorized commercial uses, in vitro diagnostic uses, ex vivo or in vivo therapeutic uses, or any type of consumption by or application to human or animals.