

CD223 (LAG-3) Monoclonal Antibody (eBioC9B7W (C9B7W)), FITC, eBioscience™

Product Details	
Size	100 µg
Species Reactivity	Mouse
Published Species	Mouse
Host/Isotype	Rat / IgG1, kappa
Recommended Isotype Control	Rat IgG1 kappa Isotype Control (eBRG1), FITC, eBioscience™
Class	Monoclonal
Type	Antibody
Clone	eBioC9B7W (C9B7W)
Conjugate	FITC
Excitation/Emission Max	498/517 nm
Form	Liquid
Concentration	0.5 mg/mL
Purification	Affinity chromatography
Storage buffer	PBS, pH 7.2
Contains	0.09% sodium azide
Storage conditions	4° C, store in dark, DO NOT FREEZE!
RRID	AB_2572484

Applications	Tested Dilution	Publications
Flow Cytometry (Flow)	1 µg/test	7 Publications

Product Specific Information

Description: The eBioC9B7W monoclonal antibody recognizes mouse CD223 (LAG-3, LAG3) protein expressed by activated alpha/beta-TCR bearing T cells, a subset of gamma/delta-TCR bearing T cells and a subset of NK cells. CD223 is a 70 kDa type I transmembrane protein with a structure that is similar to CD4. However, a soluble form of human CD223 has been detected by ELISA in human serum, and data suggest that mouse CD223 is proteolytically cleaved in the D4 domain. This results in a 54 kDa fragment containing all the extracellular domains, and a 16 kDa fragment containing the intracellular and transmembrane domains. The 54 kDa can remain membrane-associated or be released as soluble CD223.

CD223 binds to MHC class II with higher affinity than CD4, and it is thought that this interaction is involved in the negative regulation of T-cell activation and homeostatic proliferation. Furthermore, CD223 is expressed by CD4+CD25+ regulatory T cells, and it has been suggested that CD223 may be involved in their regulatory function.

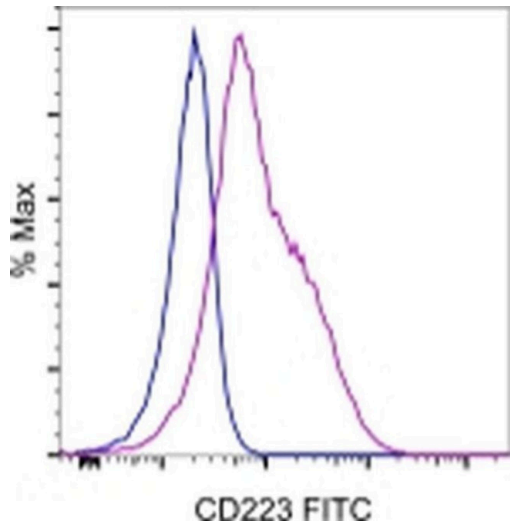
Applications Reported: This eBioC9B7W (C9B7W) antibody has been reported for use in flow cytometric analysis.

Applications Tested: This eBioC9B7W (C9B7W) antibody has been tested by flow cytometric analysis of stimulated mouse splenocytes. This can be used at less than or equal to 1 µg per test. A test is defined as the amount (µg) of antibody that will stain a cell sample in a final volume of 100 µL. Cell number should be determined empirically but can range from 10^5 to 10^8 cells/test. It is recommended that the antibody be carefully titrated for optimal performance in the assay of interest.

Excitation: 488 nm; Emission: 520 nm; Laser: Blue Laser.

Filtration: 0.2 µm post-manufacturing filtered.

Product Images For CD223 (LAG-3) Monoclonal Antibody (eBioC9B7W (C9B7W)), FITC, eBioscience™



CD223 (LAG-3) Antibody (11-2231-82) in Flow
Staining of 3-day Anti-Mouse CD3e and CD28 Functional Grade Purified (Product # 16-0031-82 and Product # 16-0281-82)-stimulated C57Bl/6 splenocytes with 0.5 µg of Rat IgG1 K Isotype Control FITC (Product # 11-4301-82) (blue histogram) or 0.5 µg of Anti-Mouse CD223 (Lag-3) FITC (purple histogram). Total viable cells, as determined by Fixable Viability Dye eFluor® 450 (Product # 65-0863-14), were used for analysis.

[View more figures on thermofisher.com](#)

7 References

Flow Cytometry (7)

<p>Journal for immunotherapy of cancer</p> <p>BRCA1 deficiency in mature CD8⁺ T lymphocytes impairs antitumor immunity.</p> <p>"Published figure using CD223 (LAG-3) monoclonal antibody (Product # 11-2231-82) in Flow Cytometry"</p> <p>Authors: Wu B, Qi L, Chiang HC, Pan H, Zhang X, Greenbaum A, Stark E, Wang LJ, Chen Y, Haddad BR, Clagett D, Isaacs C, Elledge R, Horvath A, Hu Y, Li R</p>	<p>Year 2023</p>
<p>Nature communications</p> <p>Breast cancer cell-derived extracellular vesicles promote CD8⁺T cell exhaustion via TGF- type II receptor signaling.</p> <p>"Published figure using CD223 (LAG-3) monoclonal antibody (Product # 11-2231-82) in Flow Cytometry"</p> <p>Authors: Xie F, Zhou X, Su P, Li H, Tu Y, Du J, Pan C, Wei X, Zheng M, Jin K, Miao L, Wang C, Meng X, van Dam H, Ten Dijke P, Zhang L, Zhou F</p>	<p>Year 2022</p>

[View more Flow references on thermofisher.com](#)

More applications with references on thermofisher.com

For Research Use Only. Not for use in diagnostic procedures. Not for resale without express authorization. Products are warranted to operate or perform substantially in conformance with published Product specifications in effect at the time of sale, as set forth in the Production documentation, specifications and/or accompanying package inserts ("Documentation"). No claim of suitability for use in applications regulated by FDA is made. The warranty provided herein is valid only when used by properly trained individuals. Unless otherwise stated in the Documentation, this warranty is limited to one year from date of shipment when the Product is subjected to normal, proper and intended usage. This warranty does not extend to anyone other than the Buyer. Any model or sample furnished to Buyer is merely illustrative of the general type and quality of goods and does not represent that any Product will conform to such model or sample. NO OTHER WARRANTIES, EXPRESS OR IMPLIED, ARE GRANTED INCLUDING WITHOUT LIMITATION, IMPLIED WARRANTIES OF MERCHANTABILITY, FITNESS FOR ANY PARTICULAR PURPOSE, OR NON INFRINGEMENT. BUYER'S EXCLUSIVE REMEDY FOR NON-CONFORMING PRODUCTS DURING THE WARRANTY PERIOD IS LIMITED TO REPAIR, REPLACEMENT OF OR REFUND FOR THE NON-CONFORMING PRODUCT(S) AT SELLER'S SOLE OPTION. THERE IS NO OBLIGATION TO REPAIR, REPLACE OR REFUND FOR PRODUCTS AS THE RESULT OF (I) ACCIDENT, DISASTER OR EVENT OF FORCE MAJEURE, (II) MISUSE, FAULT OR NEGLIGENCE OF OR BY BUYER, (III) USE OF THE PRODUCTS IN A MANNER FOR WHICH THEY WERE NOT DESIGNED, OR (IV) IMPROPER STORAGE AND HANDLING OF THE PRODUCTS. Unless otherwise expressly stated on the Product or in the documentation accompanying the Product, the Product is intended for research only and is not to be used for any other purpose, including without limitation, unauthorized commercial uses, in vitro diagnostic uses, ex vivo or in vivo therapeutic uses, or any type of consumption by or application to human or animals.