

# CD268 (BAFF Receptor) Monoclonal Antibody (eBio7H22-E16), FITC, eBioscience™

Product Details	
Size	100 µg
Species Reactivity	Mouse
Published Species	Mouse
Host/Isotope	Rat / IgG1, kappa
Recommended Isotype Control	Rat IgG1 kappa Isotype Control (eBRG1), FITC, eBioscience™
Class	Monoclonal
Type	Antibody
Clone	eBio7H22-E16
Conjugate	FITC
Form	Liquid
Concentration	0.5 mg/mL
Purification	Affinity chromatography
Storage buffer	PBS, pH 7.2, with 0.1% gelatin
Contains	0.09% sodium azide
Storage Conditions	4° C, store in dark, DO NOT FREEZE!
RRID	AB_837079

Applications	Tested	Dilution	Published
Flow Cytometry (Flow)	✓	0.25 µg/test	6 Publications
T-Cell Activation (TCA)	-		1 Publication

## Product Specific Information

Description: The monoclonal antibody eBio7H22.E16 reacts with mouse BAFF-Receptor, a type III transmembrane TNF receptor family member. BAFF-R was found to be the predominant BAFF receptor expressed on peripheral B cells, in both humans and mice. The receptor is found on the surface of all B220+ B cells found in spleen. BAFF-R is expressed on activated/memory subsets of T-cells and is important for splenic B cell maturation and survival and is a major mediator of BAFF- dependent costimulatory responses in peripheral B and T cells. BAFF-R can cause a high level of autoimmune disease and a defect in BAFF-R will cause a decrease in generating mature B-Cells The ligand for the BAFF-R is BAFF also known as BLyS.

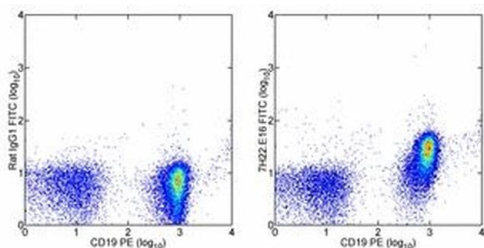
Applications Reported: This eBio7H22-E16 antibody has been reported for use in flow cytometric analysis.

Applications Tested: This eBio7H22-E16 antibody has been tested by flow cytometric analysis of mouse splenocytes. This can be used at less than or equal to 0.25 µg per test. A test is defined as the amount (µg) of antibody that will stain a cell sample in a final volume of 100 µL. Cell number should be determined empirically but can range from 10<sup>5</sup> to 10<sup>8</sup> cells/test. It is recommended that the antibody be carefully titrated for optimal performance in the assay of interest.

Excitation: 488 nm; Emission: 520 nm; Laser: Blue Laser.

Filtration: 0.2 µm post-manufacturing filtered.

## Product Images For CD268 (BAFF Receptor) Monoclonal Antibody (eBio7H22-E16), FITC, eBioscience™



### CD268 (BAFF Receptor) Antibody (11-5943-82) in Flow

Staining of BALB/c splenocytes with Anti-Mouse CD19 PE (Product # 12-0193-82) and 0.125 µg of FITC Rat IgG1 kappa Isotype Control (Product # 11-4301-82) (left) or 0.125 µg of Anti-Mouse CD268 (BAFF Receptor) FITC (right). Cells in the lymphocyte gate were used for analysis.

## 7 References

### Flow Cytometry (6)

PloS one

#### MRL Strains Have a BAFFR Mutation without Functional Consequence.

"11-5943 was used in Flow cytometry/Cell sorting to conclude that P44S B cell activating factor receptor mutation does not hinder its function or enhance B cell activity in autoimmune mice."

Authors: Allman WR,Liu L,Coleman AS,Akkoyunlu M

Species  
Mouse

Dilution  
Not Cited

Year  
2017

Annals of hematology

#### Aberrant germinal center formation, follicular T-helper cells, and germinal center B-cells were involved in chronic graft-versus-host disease.

"11594382 was used in flow cytometry to explore the roles of T and B cells in chronic graft-versus-host disease"

Authors: Shao L,Lie AK,Zhang Y,Wong CH,Kwong YL

Species  
Mouse

Dilution  
Not Cited

Year  
2015

[View more Flow references on thermofisher.com](#)

### T-Cell Activation (1)

Journal of immunology (Baltimore, Md. : 1950)

#### Critical role of B cell lymphoma 10 in BAFF-regulated NF-B activation and survival of anergic B cells.

"11-5943 was used in Flow cytometry/Cell sorting to demonstrate the essential role of Bcl10 in ensuring efficacy of BAFF, responsible for regulating NF-B activation and subsequent survival of anergic B cells."

Authors: Yu M,Chen Y,He Y,Podd A,Fu G,Wright JA,Kleiman E,Khan WN,Wen R,Wang D

Species  
Mouse

Dilution  
Not Cited

Year  
2012

## More applications with references on thermofisher.com

For Research Use Only. Not for use in diagnostic procedures. Not for resale without express authorization. Products are warranted to operate or perform substantially in conformance with published Product specifications in effect at the time of sale, as set forth in the Production documentation, specifications and/or accompanying package inserts ("Documentation"). No claim of suitability for use in applications regulated by FDA is made. The warranty provided herein is valid only when used by properly trained individuals. Unless otherwise stated in the Documentation, this warranty is limited to one year from date of shipment when the Product is subjected to normal, proper and intended usage. This warranty does not extend to anyone other than the Buyer. Any model or sample furnished to Buyer is merely illustrative of the general type and quality of goods and does not represent that any Product will conform to such model or sample. NO OTHER WARRANTIES, EXPRESS OR IMPLIED, ARE GRANTED INCLUDING WITHOUT LIMITATION, IMPLIED WARRANTIES OF MERCHANTABILITY, FITNESS FOR ANY PARTICULAR PURPOSE, OR NON INFRINGEMENT. BUYER'S EXCLUSIVE REMEDY FOR NON-CONFORMING PRODUCTS DURING THE WARRANTY PERIOD IS LIMITED TO REPAIR, REPLACEMENT OF OR REFUND FOR THE NON-CONFORMING PRODUCT(S) AT SELLER'S SOLE OPTION. THERE IS NO OBLIGATION TO REPAIR, REPLACE OR REFUND FOR PRODUCTS AS THE RESULT OF (I) ACCIDENT, DISASTER OR EVENT OF FORCE MAJEURE, (II) MISUSE, FAULT OR NEGLIGENCE OF OR BY BUYER, (III) USE OF THE PRODUCTS IN A MANNER FOR WHICH THEY WERE NOT DESIGNED, OR (IV) IMPROPER STORAGE AND HANDLING OF THE PRODUCTS. Unless otherwise expressly stated on the Product or in the documentation accompanying the Product, the Product is intended for research only and is not to be used for any other purpose, including without limitation, unauthorized commercial uses, in vitro diagnostic uses, ex vivo or in vivo therapeutic uses, or any type of consumption by or application to human or animals.